

# Chestnut Hill College Internship Consortium

## Virtual Tour

Beechwood NeuroRehab (Woods Services)

Caron Treatment Centers

Psychological Services Clinic

Prism Therapy Center

Growth Opportunity Center

Spin, Inc.



# Consortium Training Director

Lindsay Phillips, PsyD, ABPP



# Woods Services, Beechwood NeuroRehab

Joe DiCondina, PsyD  
- Site Director



---

# Beechwood NeuroRehab



Building, Front Door, and Parking Lot

# Beechwood NeuroRehab

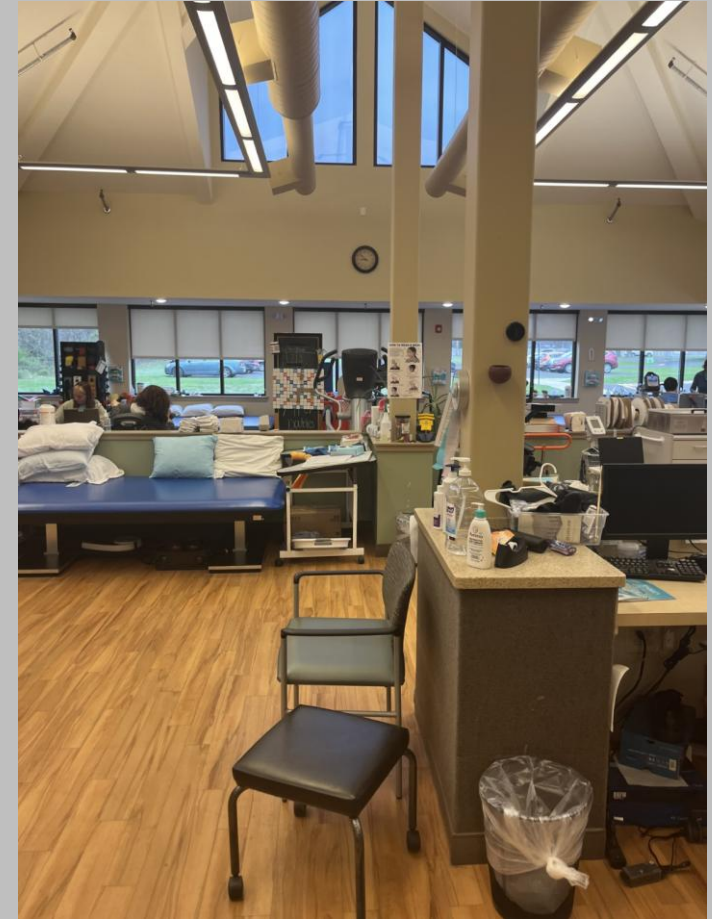


**Intern Office**

# Beechwood NeuroRehab



**Break Areas for Staff**



# Caron Treatment Centers

Paula Boulware-Brown, PsyD -  
Site Director



# Caron Treatment Centers



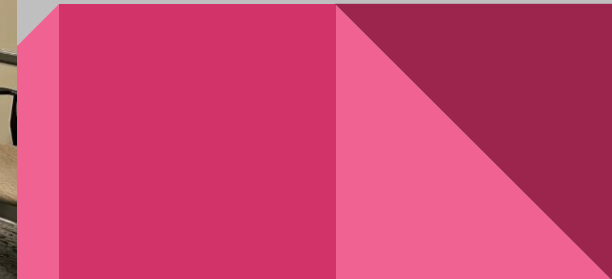
Intern Office



# Caron Treatment Centers



Intern Office



# Caron Treatment Centers



Cafe / Dining Area  
for Staff, Residents, &  
Visitors



# Caron Treatment Centers



Break Area /  
Resources (Staff Only)

# Caron Treatment Centers



Offices in other areas of campus available for use if needed



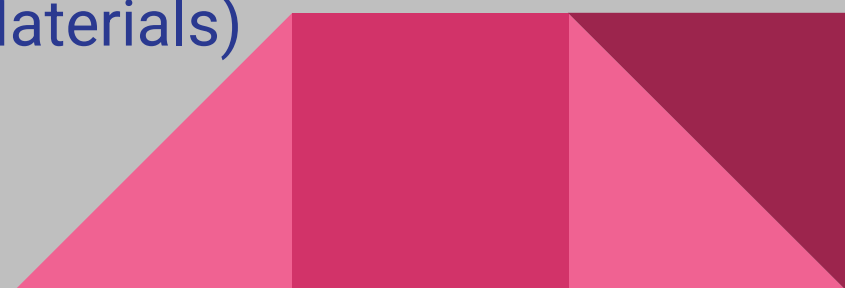
# Caron Treatment Centers



Staff Meeting Room



Storage Room -  
(Assessments & Other  
Materials)



# Psychological Services Clinic Chestnut Hill College

Amy Brosopf, PhD – Clinic Director  
Rachel Hull – Associate Clinic  
Director



---

# The Clinic



Waiting Area



# The Clinic



Offices

# The Clinic



Testing Rooms & Family/Group Room

# The Clinic



Other Work Areas and Testing Materials

# Prism Therapy Center

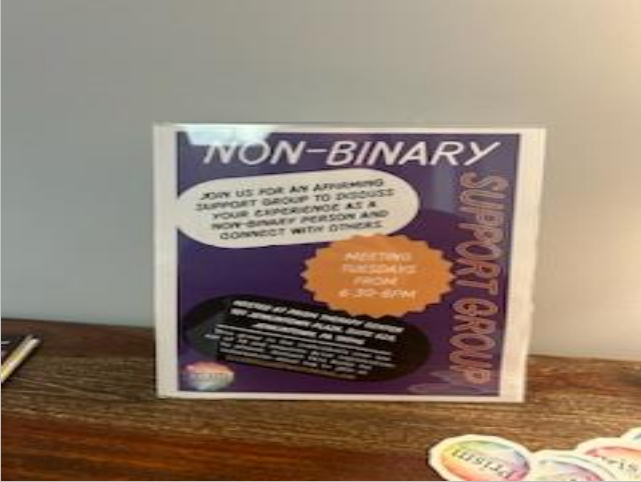
Supervisors/Co-owners  
Becca Bubb, PhD (Site Director)  
& Sophie Foster Fink, PsyD



[See image below](#)

<https://www.loopnet.com/Listing/101-Greenwood-Ave-Jenkintown-PA/4073782/>

# Prism Therapy Center



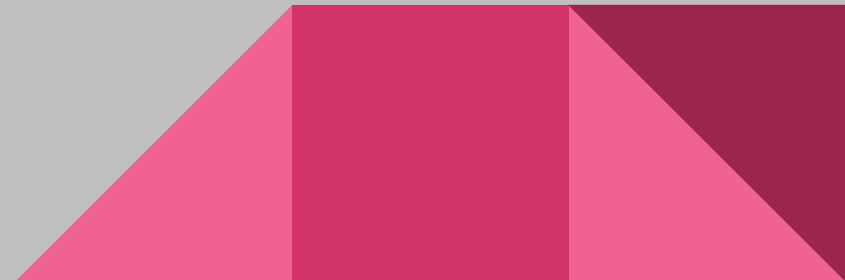
Waiting Area



# Prism Therapy Center



Offices



# Growth Opportunity Center (GOC)

Diane Sizer, PhD - Site Director



# GOC

## Waiting Areas



# GOC



Break Area



Conference Room/Group Meeting Room

# GOC



Observation Room



Therapy Offices



# GOC

## Intern Office



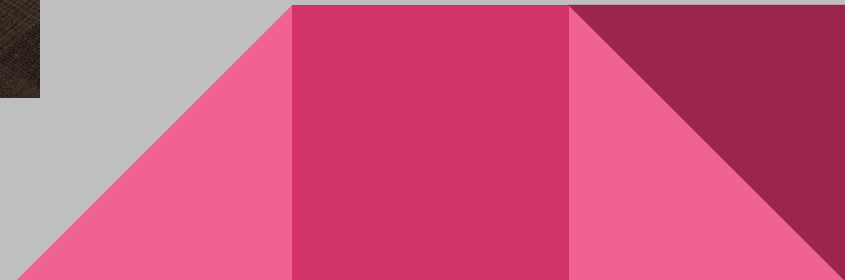
# SPIN, Inc

Jessica Lax, PsyD (Site Director) & Chelsea Greenspon, PsyD (Intern Supervisor)



# SPIN, Inc.

## Entry Way and Waiting Areas



# SPIN, Inc.



Office & Observation Testing Areas



# SPIN, Inc.



Supplies & Supply Closet

# SPIN, Inc.



Common Areas

# Chestnut Hill College Internship Consortium

Virtual Tour

Woods Services – Beechwood NeuroRehab

Caron Treatment Centers

Psychological Services Clinic

Prism Therapy Center

Growth Opportunity Center

Spin, Inc



CHESTNUT  
HILL  
COLLEGE