

# ANNUAL REPORT

FISCAL YEAR 2004–2005



# My Dear Friends & Benefactors of Chestnut Hill College,



The traditions and heritage that we hold so dear were proudly on display this year as we celebrated Chestnut Hill College's 80th Anniversary. It was a time to reflect upon the values and beliefs that have guided us in achieving this milestone, and to ensure that these values will continue to shepherd us as we move into the bright future of the College. Of course, such a special anniversary was worthy of celebration, and nearly 600 alumnae, alumni, friends, and family joined us at the Gala Anniversary Celebration in April. This special evening at the beautiful National Constitution Center in Philadelphia reinforced the pride and honor we all feel as part of a welcoming, thriving community like Chestnut Hill College. The evening was marked by the induction of the charter members of the Libris Society, an honor bestowed upon outstanding alums who exemplify one or more of the qualities celebrated in the College's motto of *Fides • Caritas • Scientia* (Faith • Charity • Knowledge). The Gala took place during an important time in the College's history, a year when our second coeducational class was embarking on its educational journey and the College as a whole was moving to a new level of excellence as an institution.

Because of the talent and hard work of many dedicated people, the College was once again able to increase enrollment, and welcomed a class of 250 first-year students, 40% of whom were males. Yet the numbers alone do not tell the story; we continue to attract higher-caliber students from around the United States and across the globe. SAT and ACT scores continue to increase, and the intellectual curiosity of our current students is commendable.

**“With such advancement among our student body and faculty, it is fitting that the physical structure and appearance of the College continues to improve.”**

Of course, these students are taught and inspired by a faculty whose dedication and enthusiasm never cease to amaze me. While our faculty as a whole is exemplary, I'd be remiss if I did not share the achievements of two faculty members. Chair of the Education Department, Carol Melvin Pate, Ed.D. received a \$313,000 grant for schools participating in the Accelerated Certification of Teachers (ACT) Grant Program awarded by the Pennsylvania Department of Education. Dr. Pate also received a \$45,000 grant from the School District of Philadelphia to enter a partnership with Germantown's Eleanor Emlen Elementary School. Also, Professor of History David R. Contosta, Ph.D. received the Chestnut Hill Award from the Chestnut Hill Community Association for his skills as both a writer and a teacher.

With such advancement among our student body and faculty, it is fitting that the physical structure and appearance of the College continues to improve. The Psychology Department has relocated to the DeSales Center, named after Sister Helen DeSales, SSJ, Ph.D., longtime professor and chair of the Psychology Department. To meet

the demands of rising enrollment, we have also broken ground on a multi-story, 155-bed residence hall slated for fall 2006 occupancy.

Academically, we approved a new major, a B.S. in Elementary Education with certification, for the School of Continuing Studies. The School of Graduate Studies announced that the Doctoral Program in Clinical Psychology earned accreditation from the American Psychology Association (APA), marking a significant milestone for the program and the College.

These great achievements would not be possible without the support of our alumnae, alumni, friends, and family. Our past support has been amazing, yet the need for additional support in the future always remains. I urge you to be a part of the College's tradition of donating time, talent, and treasure to ensure that Chestnut Hill College will be here and thriving for your sons, daughters, and grandchildren.

I sincerely anticipate that you will enjoy learning about more of our accomplishments in this Annual Report, and hope that they inspire you to join us, as we surge towards the College's future.

Gratefully,

*Carol Jean Vale, SSJ*

Sister Carol Jean Vale, SSJ, Ph.D.  
President



## CAUSE FOR CELEBRATION

The academic year 2004–2005 was truly a historic year for Chestnut Hill College as we celebrated our 80th Anniversary as an institution. We not only looked back on our 80 years of paying tribute to the College motto of *Fides • Caritas • Scientia* (Faith • Charity • Knowledge) but we also celebrated the bright future ahead of us, marked by the tremendous enrollment growth experienced in recent years. This sentiment could not have been better demonstrated than by the Class of 2008—the largest incoming class in the history of the College. The second coed class to enter our hallowed halls is a richly diverse group of remarkable and talented individuals, further strengthening our community and our mission. This was certainly a year worthy of celebration.

THE MISSION OF CHESTNUT HILL COLLEGE IS TO PROVIDE STUDENTS WITH HOLISTIC EDUCATION IN AN INCLUSIVE CATHOLIC COMMUNITY MARKED BY ACADEMIC EXCELLENCE, SHARED RESPONSIBILITY, PERSONAL AND PROFESSIONAL GROWTH, SERVICE TO ONE ANOTHER AND TO THE GLOBAL COMMUNITY, AND CONCERN FOR THE EARTH.



Chestnut Hill College, founded by the Sisters of Saint Joseph in 1924, is an independent, Catholic institution that fosters equality through education. Faithful to its strong liberal arts tradition, Chestnut Hill College offers academic programs of excellence in the areas of undergraduate, graduate, and continuing studies.

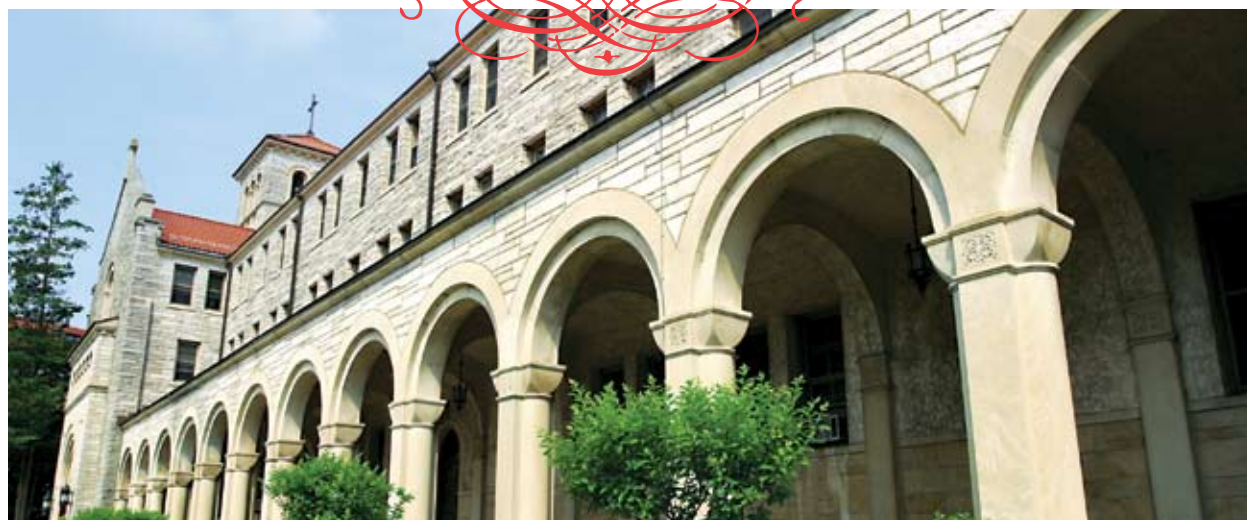
True to its Catholic heritage, Chestnut Hill College espouses the beliefs and values inherent in the Judeo-Christian tradition while it respects the contributions made by other faith traditions in the development of the whole person. The College nurtures a sense of integrity, spirituality, and social justice in all.

The College community dedicates itself to four purposes in fulfilling this mission. It seeks:

- to provide avenues for students to achieve academic excellence and to pursue research in their major field or in interdisciplinary studies. The College encourages students to explore and experience diverse curricula and to participate in exchange programs with other institutions of higher education.
- to initiate links between the world of learning and the world of work through curricular planning, technological opportunities, and career preparation. The College guides students in applying theoretical learning through experiential education designed collaboratively by faculty and students.
- to uphold an atmosphere of communal respect in which all may clarify and articulate personal values and beliefs while exploring the ethical and moral dimensions underlying all relationships. The College encourages inter-faith opportunities by acquainting all students with Catholicism, its theology, and its Judeo-Christian roots, and by engaging in dialogue with women and men of other beliefs.
- to create local and global connections that enable students to respond to the needs of others through service-oriented enterprises. The College educates students to identify and to address issues of social justice and to work toward systemic change.

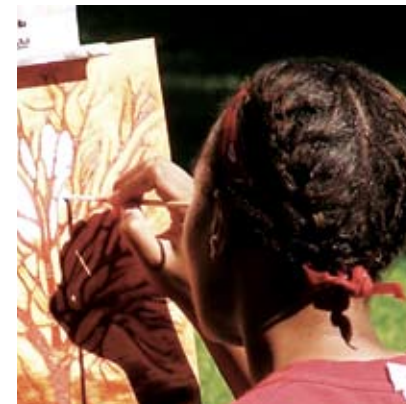
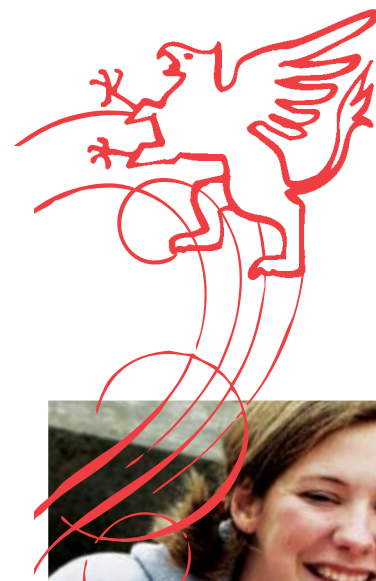
Approved by the Chestnut Hill College Board of Directors October 7, 2002.

## ACCOMPLISHMENTS FOR 2004–2005



### RECORD-BREAKING ENROLLMENT CONTINUES

**T**hese last few years have been years of unprecedented growth for Chestnut Hill College. And we've done it again, posting a second straight year of record-breaking admissions. Our Open House events were met with astonishing success, drawing the largest numbers of prospective students we have ever seen. With such an undeniably rising profile, it's no wonder that the incoming Class of 2008, our second coed class, also marks the largest incoming class in our 80-year history.



## ALUMNAE & ALUMNI ACTIVITIES

At October's Alumnae and Alumni Association Leadership Conference, President Carol Jean Vale, SSJ, Ph.D., presented the latest draft of the College's New Strategic Plan.

Santa greeted alums and their families at the traditional Alum Family Christmas Open House, which ushered in the holiday season for all those who attended.<sup>1</sup>

On March 19, 2005, the College, along with family and friends, took pause to remember all deceased alums

in a special Mass of Remembrance celebrated in the Fournier Hall Chapel.

Home Coming Weekend brought generations of Griffins together for a wonderful weekend of food, fun, and games.<sup>2</sup>

The Alumnae and Alumni Association raised their glasses to the Class of 2005 at the annual wine-tasting reception that officially welcomes the graduating seniors into the Association.<sup>3</sup>



REUNION WEEKEND 2005



was an unforgettable success as more than 300 alums returned to campus for a fun yet relaxing weekend full of memories and laughter. A special honoree that weekend was Mary Levin Englebert '50 who was the gracious recipient of the Alumnae and Alumni Association's 2005 Eleanore Dolan Egan '28 Award for Outstanding Service to Chestnut Hill College.<sup>1</sup> The former Curriculum Library was officially renamed the Regina Maria Brimmer, SSJ, Children's Collection in honor of Regina Maria Brimmer, SSJ '40 for her decades of dedicated service to Logue Library. President Carol Jean Vale, SSJ presented her with a commemorative plaque at the Golden Griffins brunch.<sup>2</sup>



## 2<sup>ND</sup> ANNUAL ART AUCTION

Inspiring works of art provided by Marlin Fine Auctions prompted lively bidding wars that translated into profits for the College's academic and student life programs.

### COMMITTEE MEMBERS

Catherine Lockyer Bitting '92, Chairperson  
Sharon Cameron Baldwin '76  
Patricia Canning '70  
Joanne Fink '76  
Anne Gardner  
Patti Kane-Vanni, Esq. '75  
Delia Schiavi Melograna '42  
Nancy Arauz Monnat '71  
Kathleen O'Boyle '84  
Mary Quinn '67  
Elizabeth Churbe Ray '04  
Heyda Baez Toth '77  
Carol Voelmle Zemnick '75

### GIFT DONORS

Avant Apres'  
Linda D. Berger, Artist  
Sharon Cameron Baldwin '76  
Catherine Lockyer Bitting '92  
Patricia Canning '70  
Melvin Chappell, Photographer  
Pat Conroy, Author  
Antonina D'Alicandro D'Emilio '93  
Maria's Restaurant  
Joanne Fink '76  
Tara Flynn Runge '84 and Dorian Flynn  
Glenside Irish Shop  
Stephen and Anne Gardner  
Anne Gardner, iNSIDEOUT - elements of design  
Lou Guzzi, Experienced Golf Center Teaching Academy  
Patti Kane-Vanni '75  
Cassandra King, Author  
Chip & Phyllis Marshall  
Kathleen O'Boyle '84  
Maureen Kelsey O'Hara '88  
Lynne Palopoli, Rapunzel's Day Spa  
Mark S. Petteruti, Botanical Expressions



Carol Saline & Sharon Wohlmuth  
Elizabeth Churbe Ray '04  
Amy Soeffling, Pink Peony Consignments, Inc.  
Andy Smith, Artist  
Sweet Magnolia Gift Shop  
Margaret Thompson, SSJ, Artist  
Heyda Baez Toth '77  
Jennifer Toth '05  
Howard N. Watson, AWS, Artist  
Andy Wu, Artist, Govberg Jewelers  
Carol Zemnick, Artist

## REUNION 2005 APPEAL

### RESIDENCE HALL NEW FURNITURE

CLASS	REUNION	RESPONSE	AMOUNT
1940	65TH	33%	\$ 900
1945	60TH	14%	\$ 2,354
1950	55TH	40%	\$ 6,995
1955	50TH	47%	\$ 7,480
1960	45TH	35%	\$ 3,890
1965	40TH	29%	\$ 5,655
1970	35TH	7%	\$ 755
1975	30TH	10%	\$ 600
1980	25TH	8%	\$ 755
1985	20TH	3%	\$ 150
1990	15TH	3%	\$ 175
1995	10TH	2%	\$ 75
2000	5TH	6%	\$ 85
<b>TOTAL</b>		<b>17%</b>	<b>\$ 29,869</b>
<b>MATCHING</b>			<b>\$ 525</b>
<b>TOTAL REUNION 2005</b>			<b>\$ 30,394</b>



A CHEERFUL GOODBYE

In line with our recent trend of breaking records, May 7, 2005 witnessed the largest graduating class in the history of the College as 385 cheering students took the knowledge and values gained at Chestnut Hill College into the real world.

Delivering the Commencement address was distinguished theologian and retiring President and Executive Director of the Association of Catholic Colleges and Universities (ACCU), Monika K. Hellwig, Ph.D., who stressed to the graduates the importance of incorporating service to the community into their lives along with their careers.<sup>1</sup>

The honorary degree of Doctor of Laws was bestowed on Monika K. Hellwig, Ph.D. and education advocate and entrepreneur Winston J. Churchill, Jr., J.D.

Retiring Associate Professor of English, Agnes Shields, SSJ, Ph.D., received the 2005 Christian R. and Mary F. Lindback Award for Distinguished Teaching, along with a standing ovation from faculty and students as she accepted the award.<sup>2</sup>



On April 24, much-deserved recognition was paid to those students who exemplified outstanding academic achievement in 2005. The esteemed Thomas Childers, Ph.D., professor of history at the University of Pennsylvania for over 25 years, delivered the address.<sup>1</sup> The Distinguished Service Award was given to Carol Consorto, M.Ed., Interlibrary Loan Librarian.<sup>2</sup>

Senior Melissa Stopyra was the recipient of the Catherine F. Sladowski, M.D. '66 Prize, donated by Stephanie O'Connell Siergrist, M.D. '84.<sup>3</sup>

This year's St. Catherine Medal recipient was junior Stacie Bray.<sup>4</sup>



The 2004-2005 Lecture Series saw its most prolific year with an array of intriguing and important topics discussed, dissected, and demystified by an impressive roster of esteemed intellectuals.

In commemoration of the great theologian Karl Rahner's posthumous 100th birthday, the Graduate Program in Holistic Spirituality hosted Leo O'Donovan, SJ, Ph.D., President Emeritus of Georgetown University and renowned Rahner scholar for three public lectures in November.<sup>1</sup>

The Biology Department's 11th Annual Biomedical Lecture Series presented two very different yet equally informative evenings. It began on November 10th, with forensic pathologist Eric Lee Vey, M.D. as the guest speaker. His topic *Forensic Pathology: A Dead Science*, drew on his experience as autopsy service provider for the Erie, Pennsylvania medical examiner's office.<sup>2</sup> In April, the lecture series continued with "Evolution of Breast Surgery" by Dr. Marcia Boraas, breast surgeon and clinical associate professor of surgical oncology at the University of Pennsylvania. Prior to the lecture, Dr. Boraas engaged in an informal discussion with biology students.

On March 30th, painter Maureen Drdak offered art lovers insight into her stunning exhibit *Ex Voto*, a visual meditation on spiritual and psychological dualities as expressed in the subject of the sacrificial image.<sup>3</sup>

Viewing topics from all angles, The Business Department presented former white-collar criminal Walter Pavlo (right) to discuss *Business Ethics and Accounting Fraud*, focusing on the motivations associated with such crimes. Once a senior manager at MCI, Pavlo was caught diverting \$6 million in funds, leading to a three-year prison sentence.<sup>4</sup>

On March 2nd, the College partnered with Intercultural Journeys, a non-profit organization dedicated to promoting understanding among people of different cultures, presented a lovely evening of music, poetry, and art, featuring a diverse group of Jewish and Arab musicians.<sup>5</sup>

Kathleen Duffy, Ph.D., professor of physics, welcomed Dr. Richard Viladesau, professor of theology at Fordham University, whose topic, "Science and the Beauty of Creation," aimed to show how the concept of biological evolution is compatible with the notion of the world as an intelligible and divine creation.<sup>6</sup>

Sandra Bertman, LCSW, Ed.M., Ph.D., offered a February lecture on "Dying and Caring: Spirituality, Healthcare, and the Arts."<sup>7</sup>



OCTOBER 11, 2004  
WHITEMARSH VALLEY  
COUNTRY CLUB

In our 22nd year of teeing-off to benefit the College's academic and student life programs, we were pleased to honor special friends of the College, Connie & John F. McGill, Sr. for their faithful support of this event and Chestnut Hill College through the years.<sup>1</sup>

22ND ANNUAL GOLF INVITATIONAL

COMMITTEE

Co-Chairs

Steve Gardner,  
Deloitte & Touche, LLP  
Patricia Brabson,  
Beneficial Savings Bank

Committee Members

Christopher Cummings, Esq. Stradley,  
Ronon, Stevens & Young, LLP  
Pamela Cyr, Equity Bank  
Valerie Mikula Hughes, D.D.S. '74  
Robert C. Lockyer,  
MERLOC Partners, L.P.  
Lizanne Magarity Pando,  
Magarity Chevrolet, Inc.  
Jef McGill  
Andrew J. Miller,  
Beneficial Savings Bank  
Lyn Montgomery '97  
John Sabia, Jr., D.M. Sabia & Co., Inc.  
Mark Sutton

MAJOR SPONSORS

Masters

Beneficial Savings Bank  
The Haverford Trust Company  
Thomas Wynne Apartments

Platinum

Crown Holdings, Inc.  
Deloitte & Touche, LLP  
The Arthur Jackson Company  
Magarity Dealerships  
McHugh Associates, Inc.  
Sentry Hospitality, Inc./  
Mark Magarity  
Shoemaker Construction Company  
Stradley, Ronon, Steven & Young, LLP  
Susquehanna Patriot Bank

Gold

Alliance Bank  
Coupe Flowers  
First Keystone Federal Savings Bank  
Garrison Printing Company, Inc.

Rainer & Company  
Tri-State Communications, Inc.  
Harry and Marianne Wallaesa

Silver

Joseph P. Denny  
Gerald H. McGinley  
Dr. Valerie Mikula Hughes, D.D.S.  
Trans Union, LLC

BRUNCH SPONSOR

PRIME BUSINESS SYSTEMS  
Avaya Communication Business  
Partner - Walt Garvin

CARTS SPONSORS

160over90  
Duane Morris, L.L.C.

PUTTING CONTEST SPONSOR

Oxford Legal Associates

COURSE REFRESHMENTS SPONSORS

Beneficial Savings Bank  
Magarity Dealerships

BALL SPONSORS

Sovereign Bank

HOLE SPONSORS

Marilyn Adamonis  
ARSCO Automotive Refinish  
Service Co.  
Bevilaqua Plumbing, Inc.  
Barbin & O'Connell  
Brucker & Whitacre Appraisal Corp.  
Bruno's Restaurant  
Capital Appraisal, Inc.  
Chestnut Hill Dental Group  
Geraldine Dougherty  
Louis A. Iatarola Realty Appraisal  
Group, LTD  
Ted LaFair, Smith Barney, Bala Cynwyd  
Northwest National Mortgage Co.  
John Spagnola, Michael Cosack &  
Mark Schlegel of PFM Advisors

PODS Moving & Storage –  
Robert Hughes  
Rogers Realty Advisors –  
Real Estate Appraisers  
John Sabia  
T. Schneider Company  
Searchtec Holding, Inc.  
Seating Concepts, Inc.  
Mark Sutton  
Cary Tye

CONTRIBUTORS

Beneficial Savings Bank  
Patricia Brabson  
Geraldine Dougherty Company  
Mr. Joel Flachs  
Steve Gardner  
Lisanne Mikula Hay  
Mrs. Jane M. Hughes  
IDC Centre  
Krum Financial Services  
John H. Lambrecht  
Laurence Casey Lambrecht  
Magarity Dealerships  
Mark Magarity/Sentry Hospitality, Inc.  
W.B. McCullough, II  
Jef McGill  
Mrs. James Mikula  
Geri Miller – Bollinger Insurance  
Mark Sutton



**80TH ANNIVERSARY  
GALA CELEBRATION**

**NATIONAL CONSTITUTION CENTER**

*O*n the momentous evening of April 16, 2005, nearly 600 alums, family, and friends converged in the light-filled Great Hall of the National Constitution Center to celebrate the College's 80th Anniversary along with the induction of the Libris Society Charter Members. Featuring Master and Mistress of Ceremonies, Chris "Hardball" Matthews and his wife, Washington D.C. news anchor Kathleen Matthews, the black-tie gala was a smashing success with alums traveling from 15 states to attend. The event did not go unnoticed by the media, as coverage of the party aired on all three of Philadelphia's major television news programs. The Gala, which was one of the most successful events the College has ever sponsored, raised more than \$160,000. A wonderful spirit of pride in the College and its graduates pervaded the entire evening.

Dr. Rocco and Barbara D'Iorio Martino '60 were the 80th Anniversary sponsors of the event.<sup>1</sup>

Marianne McGurk Wallaesa '87, was the Gala Chairperson as well as a major sponsor.<sup>2</sup>



**80TH ANNIVERSARY CONCERT  
FEATURING COLM WILKINSON**

On June 11, 2005, at the Kimmel Center for the Performing Arts, Broadway star Colm Wilkinson, known for originating the role of Jean Valjean in *Les Miserables*, entertained concert-goers with original songs as well as classics from his Broadway musicals. The memorable evening was part of the Sister Marie Therese Cogan, SSJ Memorial Visiting Artist Series, made possible by an endowment established through the efforts of Mr. & Mrs. Larry Genuardi.<sup>3</sup>



**80TH ANNIVERSARY GALA SPONSORS**

*80th Anniversary Sponsor*

Dr. and Mrs. Rocco L. Martino

*Gold Griffin Sponsors*

New York Life Insurance Company  
Bill and Trudy Carlin Rutledge '63

*Scarlet Griffin Sponsors*

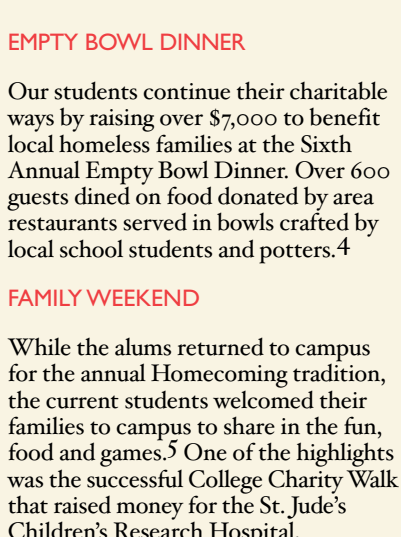
Frank and Patricia Crane Lynch '54  
Meniscus Limited  
Moore Cadillac Company  
The Philadelphia Trust Company  
The W Group

*Silver Griffin Sponsors*

Joseph and Bernadine Keeler Abbott '51  
Beneficial Savings Bank  
Judith E. Campbell '69  
Crown Holdings, Inc.  
Keough Electric, Inc., Engineers and Contractors  
Miriam Gibbons Mandell '61 and Ann Rusnack Sorgenti '58  
Russell Roofing Company

*White Griffin Sponsors*

Madame Young-shin Chang '59  
Class of 1973  
Elizabeth Marron Cooper '71  
Country Day School of the Sacred Heart  
Alice Ann Gricoski Dachowski, M.D. '77  
Drexel University  
Debi Rosenberger Eckhart '79  
Fenningham, Stevens, & Dempster, LLP  
Rosemary McCarron Flannery '43 and Patricia Harper Petrozza, M.D. '74  
Kathleen Herzog Larkin, Esq.  
Kathleen McNulty Mauchly-Antonelli '42  
Anna C. O'Riordan, M.D. '53  
Margaret Richardson O'Rourke '51  
D. M. Sabia & Company, Incorporated  
The Schubert Family  
Mary Schuhsler Spangler, Ed.D. '64  
Bob and Anne Brannan Teufel '60



**IRVING BERLIN REVIVED ON CAMPUS**

The College's Music Department did justice to the popular Broadway musical *Annie Get Your Gun*, originally penned by composer Irving Berlin. In true Broadway style, they played to sold-out crowds on April 8th, 9th, and 10th.

**CAROL NIGHT**

The trained voices of students, under the skilled direction of Kathleen McCloskey, SSJ set a resplendent tone for the holidays with its greatly anticipated Carol Night, now a 28-year tradition at Chestnut Hill College. Revelers were treated to student ensembles and audience sing-a-longs in the festive, student-decorated rotunda.<sup>1</sup>

**FOUNDER'S DAY**

In honor of the College's 80th Anniversary, Founder's Day was celebrated with the 2004 Mission Award, bestowed on 80 students who have exemplified the values and mission of the College.<sup>2</sup> In addition, an 80th Anniversary time capsule was buried in Mandell Courtyard and will not be opened until 2024.<sup>3</sup>



**EMPTY BOWL DINNER**

Our students continue their charitable ways by raising over \$7,000 to benefit local homeless families at the Sixth Annual Empty Bowl Dinner. Over 600 guests dined on food donated by area restaurants served in bowls crafted by local school students and potters.<sup>4</sup>

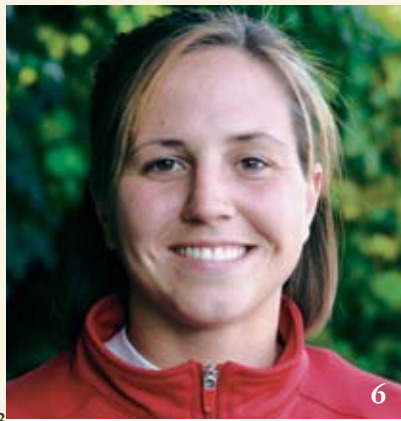
**FAMILY WEEKEND**

While the alums returned to campus for the annual Homecoming tradition, the current students welcomed their families to campus to share in the fun, food and games.<sup>5</sup> One of the highlights was the successful College Charity Walk that raised money for the St. Jude's Children's Research Hospital.

**STUDENT ACTIVITIES**

**WOMEN'S SOCCER**

For the second straight year, the women's soccer team won the AWCC Conference title with an impressive 3-0 victory over #1 seed and conference rival College of Notre Dame. Rightfully so, Coach Michele Mocarsky was named the 2004 "Coach of the Year."<sup>6</sup>



**MEN'S BASKETBALL**

In an explosive second season, the men's 13-1 basketball team captured the regular season championship, advancing them to NEAC semifinals for the first time. This impressive performance earned coach Jesse Balcer "Co-Coach of the Year."<sup>7</sup> Sophomore Isaac Greer was awarded the game ball by President Carol Jean Vale, SSJ, after becoming the first men's basketball player to score 1,000 points in the history of the College. And that's after just two seasons.<sup>7</sup>

**WOMEN'S BASKETBALL**

To further assert the quality of our Athletics Department, the women's basketball team won the AWCC Conference Tournament and advanced to the Big Show—NCAA tournament play—marking yet another "first" in the history of the College. Coach Jackie deMarteliere, in only her first year, was also named AWCC "Coach of the Year."<sup>8</sup>

**"HI" TEA**

In the usual tradition, the President hosted the graduating class at an elegant tea, giving the seniors a chance to socialize with faculty and staff before graduation.<sup>9</sup>



The needs of a private college in today's world are many. As a small institution dedicated to teaching, Chestnut Hill College is largely tuition driven. Although tuition for undergraduates at Chestnut Hill College exceeds \$19,000, it provides only 60 percent of the real cost of educating a student. To maintain its tradition of excellence in education, Chestnut Hill College seeks to make up the difference through contributions. The College receives no financial assistance from the Catholic Church or the Archdiocese of Philadelphia, and funding from state or federal agencies is given only for specific projects or programs. Contributions from alumnae/i, parents and other friends to any of the funds listed below are investments in the College's future and help assure that a Chestnut Hill College education will be available for future generations.

**OPPORTUNITIES FOR PROVIDING SUPPORT**

**ANNUAL FUND**

To supplement the operating budget, the College seeks contributions each year from alumnae/i, parents, and other friends. These gifts are used to help with general expenses, providing assistance with everything from library acquisitions and faculty salaries to utilities and instructional supplies. Because this fund is critical to day-to-day operations, the College stresses its importance to all donors, asking that they continue to support the Annual Fund in addition to any other areas of specific interest.

**REUNION GIVING FUND**

Every five years, as they celebrate the anniversary of their graduation, classes are asked to consider undertaking a special fundraising effort. Some have selected specific physical plant projects, such as renovation of the alcoves in St. Joseph Hall or restoration of the Rotunda or renovation of the residence halls. Others have elected to establish a scholarship fund or underwrite landscaping needs. These special projects have helped the College with the extraordinary expenses of maintaining a large, historic, aging physical plant and providing financial assistance for deserving students.

**ENDOWMENT FUND**

Contributions to the institution's endowment are invested and only the income is used each year. Donors have chosen to invest in the College's future by endowing scholarships, lecture series, and other specially designed programs.

**CAPITAL GIFTS INITIATIVE**

This effort seeks funds for several specific renovation and construction projects. The projects were identified through a careful analysis of the campus as part of a Site and Facilities Master Plan and have been determined by the Board of Directors to be essential to the College's future growth.

**CHARITABLE GIFT OPTIONS**

Chestnut Hill College is a tax-exempt charity, acknowledged by the Internal Revenue Service as rating 501-C-(3) status. All contributions to Chestnut Hill College are fully tax deductible and may be given using any of the following methods:

**OUTRIGHT GIFTS**

• Gifts of cash may be given for any purpose. Checks or money orders should be made payable to Chestnut Hill College. Funds may also be transferred directly to the College's account via wire transfer.

• Gifts of appreciated marketable securities may be transferred to Chestnut Hill College for any purpose. Securities may be given via electronic transfer or by re-registering the shares in the name of Chestnut Hill College and mailing the certificates to the Vice President for Institutional Advancement. To avoid paying capital gains tax, the donor should give the shares directly to the College. As a tax-exempt organization, the College is able to sell the shares without paying tax. The donor's income tax deduction is based upon the value of the shares on the date they are given to the College.

• Paid-up life insurance policies, real estate, gifts-in-kind, appreciated property, closely held stock, and other holdings may be given based upon their valuation and acceptance by the College.

For specific information about electronic transfers, please contact Lorraine Aurely, Vice President of Institutional Advancement, at 215.248.7103 or e-mail aurelyl@chc.edu

**LIFE INCOME GIFTS**

Life income gifts may be funded through outright contributions or pledges of a variety of assets, including those mentioned above. Life income options also include:

• Charitable remainder trust—separately managed trust funds that provide income to the donor for life. These may be established as annuity trusts, which provide a fixed amount of income, or as unitrusts, which provide income based upon a percentage of trust assets.

• Charitable gift annuity—offers a way to make a meaningful and major gift while benefiting the donor. This is an agreement between an individual and the College in which the donor transfers assets to Chestnut Hill College and receives fixed payments for the rest of her/his lifetime and/or the lifetime of another person.

• Deferred gift annuity—like a charitable gift annuity, a deferred annuity is a type of insurance contract that provides a fixed income. With this method, however, a donor contributes currently but does not begin receiving income until a later date.



**BEQUESTS**

Donors may choose to include Chestnut Hill College, Philadelphia, PA, as a beneficiary in their wills. The College may be named as the recipient of a specific amount or be designated to receive a percentage of the donor's estate. Donors may indicate a specific use for the funds or designate that they are unrestricted.

**MATCHING GIFTS**

Those donors who are employed, or whose spouses are employed, by companies with matching gift programs can provide additional support for Chestnut Hill College by designating the College as the recipient of matching funds. To learn whether your contributions may be eligible, contact your company's personnel office or write to the Office of Institutional Advancement at the College.

**TRIBUTE FUND**

Donors can support Chestnut Hill College by honoring or memorializing a special person or event. Tribute cards are sent advising the designated individual(s) of the gift but not the amount. Forms are available from the Office of Institutional Advancement; please call 215.248.7137.

**ENDOWED SCHOLARSHIPS**

**CHESTNUT HILL COLLEGE FULL-TUITION, ROOM-AND-BOARD AWARDS**

To establish a perpetual full-tuition, room-and-board award, a minimum gift of \$600,000 is needed. This principal will be invested and the income used for a scholarship (full-tuition, room-and-board) and reasonable administrative expenses. This award will be listed in the catalog when the entire \$600,000 has been received and the interest earned. Provisions for awarding will be discussed with the donor. The College reserves the right to choose the recipient and to award the grant.

**CHESTNUT HILL COLLEGE FULL-TUITION AWARDS**

To establish a perpetual full-tuition award, a minimum gift of \$500,000 is needed. This principal will be invested and the income used for a scholarship (full-tuition) and reasonable administrative expenses. This award will be listed in the catalog when the entire \$500,000 has been received and the interest earned. Provisions for awarding will be discussed with the donor. The College reserves the right to choose the recipient and to award the grant.

**CHESTNUT HILL COLLEGE PARTIAL-TUITION AWARDS**

To establish a perpetual partial-tuition award, a minimum gift of \$50,000 is needed. This principal will be invested and the income used for a scholarship (partial-tuition) and

reasonable administrative expenses. The award will be listed in the catalog. Chestnut Hill College reserves the right to choose the recipient and to award the grant after the entire \$50,000 has been received and the interest earned.

**CHESTNUT HILL COLLEGE GRANTS (NOT ENDOWED)**

**FULL-TUITION AWARDS**

For a full-tuition Chestnut Hill College grant, a donation of \$80,000 is needed. This covers tuition and fees for one student for four years. At the end of four years, the money will have been fully dispersed in tuition grants and administrative expenses. Chestnut Hill College reserves the right to choose the recipient and to award the grant. Donors may pledge to pay in increments of \$20,000 per year for four years.

**PARTIAL-TUITION AWARDS**

For a partial-tuition Chestnut Hill College grant, a donation of \$10,000 is needed. This covers partial-tuition and fees for one student for four years. At the end of four years, the money will have been fully dispersed in tuition grants and administrative expenses. Chestnut Hill College reserves the right to choose the recipient and to award the grant. Donors may pledge to pay over a period of four years.

**MATCHING GIFTS POLICIES**

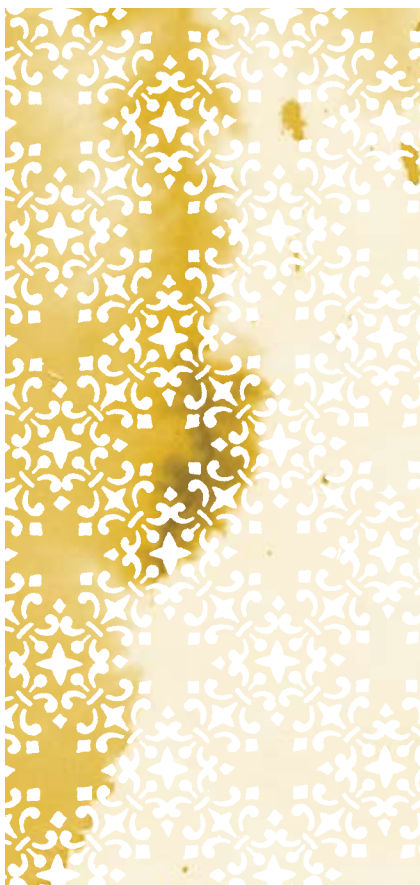
Chestnut Hill College welcomes matching gifts and encourages donors or their spouses who work for matching gift companies to apply for such donations. In administering matching gifts, the College follows national guidelines. Designation of matching gift funds is determined by each matching gift company. Funds are used for the same purpose as the employee's gift when received from corporations that so stipulate. For funds received from corporations that designate the match as unrestricted, the purpose is determined by the College. Recognition of matching gifts is determined as follows:

*The match is the gift of the corporation. Companies are recognized in a special section of the Annual Report.*

*The names of individuals who obtain matching gifts are listed in the Annual Report and annotated to show that the College was designated to receive a match. The amount of the matching gift is not used to determine the individual's level of support; membership in gift clubs is determined only from the amount contributed directly by the individual donor.*

**IS THE DEVELOPMENT OFFICE FOR THE SISTERS OF ST. JOSEPH THE SAME AS THE COLLEGE'S?**

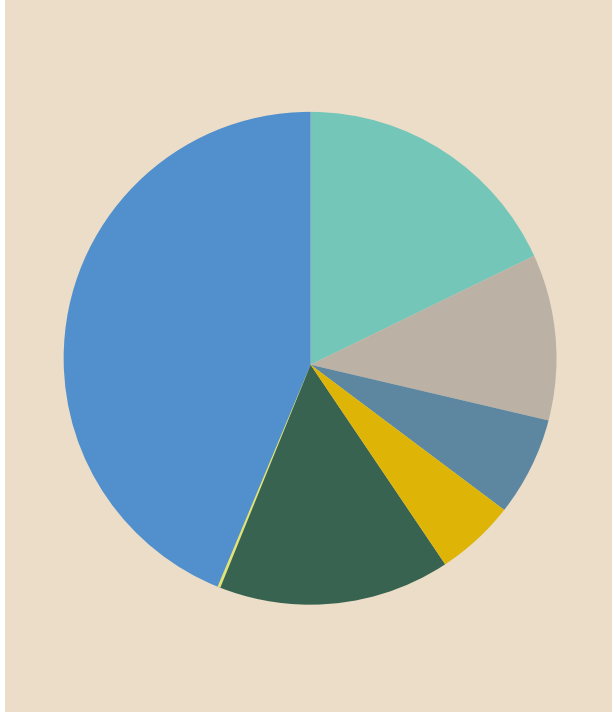
Because Chestnut Hill College and the Sisters of St. Joseph are separate corporations and have different fundraising needs, there are two separate Development Offices. Contributions are not shared by these distinct entities. Donations to the College for its various needs are managed by the College's Development Office, a part of the Office of Institutional Advancement.



**GIFTS AND GRANTS: JULY 1, 2004 - JUNE 30, 2005**

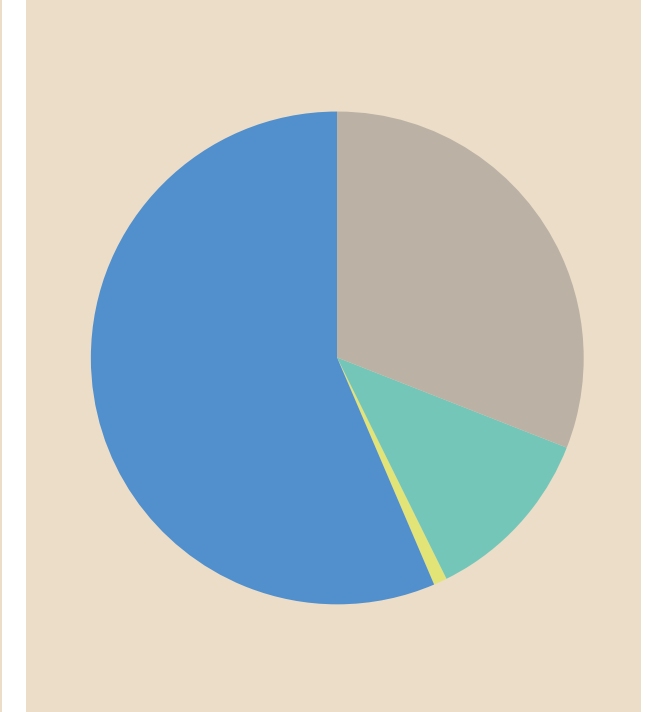
	ANNUAL FUND UNRESTRICTED	CAPITAL GIFT INITIATIVE	ENDOWMENT	OTHER	TOTAL
ALUMNAE & ALUMNI	\$ 435,342	\$ 339,628	\$ 25,100	\$ 5,725	\$ 805,795
PARENTS & FRIENDS	\$ 99,408	\$ 149,213	\$ 10,345	\$ 62,528	\$ 321,494
CORPORATIONS	\$ 252,199	\$ 13,600		\$ 35,340	\$ 301,139
FOUNDATIONS	\$ 3,750	\$ 20,000	\$ 1,000	\$ 116,675	\$ 141,425
GOVERNMENT				\$ 749,967	\$ 749,967
MISCELLANEOUS	\$ 500			\$ 4,631	\$ 5,131
CONTRIBUTED SERVICES OF THE SISTERS OF ST. JOSEPH	\$ 450,000			\$ 1,426,337	\$ 1,876,337
<b>TOTAL</b>	<b>\$ 1,241,199</b>	<b>\$ 522,441</b>	<b>\$ 36,445</b>	<b>\$ 2,401,203</b>	<b>\$ 4,201,288</b>

**GIVING BY CONSTITUENCY**



- ALUMNAE & ALUMNI 19%
- PARENTS & FRIENDS 8%
- CORPORATIONS 7%
- FOUNDATIONS 3%
- GOVERNMENT 18%
- MISCELLANEOUS 0%
- CONTRIBUTED SERVICES OF THE SISTERS OF ST. JOSEPH 45%

**GIVING BY PURPOSE**



- ANNUAL FUND/UNRESTRICTED 30%
- CAPITAL GIFTS INITIATIVE 12%
- OTHER 57%



## FLEUR DE LIS SOCIETY

Members of the *Fleur de Lis* Society were personally thanked by Carol Jean Vale, SSJ, Ph.D. at a wine-tasting reception at the College on September 25, 2005.

CHESTNUT HILL COLLEGE IS DEEPLY  
GRATEFUL TO THE FOLLOWING  
DONORS WHO CONTRIBUTED  
\$1,000 OR MORE TO THE ANNUAL  
FUND IN 2004-2005.

Rosalie Reardon Albers, M.D. '39  
The Arthur Jackson Company  
Lorraine Aurely '71  
Martina McCarthy Ball '66  
Beneficial Savings Bank  
Maude Meehan Belli '49  
Carolyn Bensel, Ph.D. '63  
Catherine Lockyer Bitting '92  
Mr. & Mrs. William Bohnett  
(Clare Hamilton '71)  
Mr. & Mrs. John P. Borneman  
Elizabeth M. Bowden, LL.D.  
Mary E. Brandt, Ph.D. '76  
Kathleen Donahue Bruyere,  
USN, Ret. '66  
Judith E. Campbell '69  
Chestnut Hill College Alumnae &  
Alumni Association  
Gloria Perla Coe '46  
Mary Connolly '50  
Mary Lee Rothwell Corr '60  
Joan Coyne '52  
Crown Holdings, Inc.  
Drs. Edward and Alice Gricoski  
Dachowski '77  
E. Loretta Daly '47  
Frank and Elaine Bennett Davey '65  
Deborah Davies  
in memory of my daughter,  
Tiffaney Faith '02  
& my husband, Oliver  
Deloitte & Touche, LLP  
Eileen O'Rourke Deneen '54  
Mary Katherine Schubert Denny '40  
Adelaide DiBerardino '48  
Marie DiBerardino, Ph.D. '48  
Mr. & Mrs. John Doody  
In memory of Ann S. DeFelice  
Barbara Middlebrook Doyle '53  
Suzanne Schulz Dressler '71  
Duane Morris, LLP  
Suzanne K. Dufrasne '58  
Joan Mathers Eaves '52  
Barrie Thomas Fahey '59  
Joanne Fink '76  
in memory of Marien Fink  
Deborah Dougherty Flint '59  
Mary Gallagher '70  
Stephen A. and Anne Gardner  
Marcia A. Gehman, SSJ '63

Robert and Ellen Glackin  
Mary Isabel Lambert Glenn '61  
Estate of Maria Stillmun Goldschmidt '33  
Patricia Tichenor Greer '62  
Helen Gruber '52  
Shelley Sprague Guerard '66  
The Gulati Family Foundation  
(Rosemary Murphy Gulati '61)  
Isabelle Walsh Gundaker '65  
Elizabeth Du Ban Hansen '51  
Frances McCarron Harper '48  
Kate Griffiths Harrison '98 SGS  
The Haverford Trust Company  
Shirley Kieser Hoberg '47  
Virginia A. Hogan '53  
Quita W. Horan  
Gwendolen Forsyth Hurley '58  
Judith Bourgeois Jensen '60  
The T. James Kavanagh Foundation  
Wilma Carson Kellerman, M.D. '55 &  
Edwin Kellerman, M.D., J.D.  
Julia Heitzman Koechlin '66  
Rosemary Hagan Lignelli '58  
Patricia Crane Lynch '54  
Peggy Grant Malone '46  
Samuel P. Mandell Foundation  
(Miriam Gibbons Mandell '61)  
Katherine Marschall, M.D. '69  
Rocco & Barbara D'Iorio Martino '60  
Joanne McFadden McBride '63  
Margaret Carney McCaffery '77  
Maureen Rykowski McCarthy '02 SCS  
Catherine Winter McDonnell '45  
McHugh & Associates, Inc.  
Loretta M. McLaughlin '74 SCS  
Anne Duffy Mirsch '52  
Anne E. Moore '51  
Jacques & Blanche Haviland Moore '50  
Helen Kenny Motzenbecker '50  
Frances McCormack Murphy '73  
Francis X. & Nonie Glennon Murphy '66  
Mary O'Gorman Murray '74  
The Navesink Foundation (J. Hugh &  
Nancy O'Shea Devlin '64)  
Jeanne Sweeney Nelson '42  
Angela Mason Nolan '42  
Mr. & Mrs. Shaun F. O'Malley  
160over90  
Margaret Richardson O'Rourke '51  
Mary Elizabeth Ounsworth '92 SCS  
Bill and Mary Noel Page  
Patricia Harper Petrozza, M.D. '74  
The Philadelphia Contributionship

The Philadelphia Trust Company  
Frances McCullen Pierce '63  
Susan M. Pisano '71  
Lois Pope LIFE Foundation  
(Lois Berrodin Pope '55)  
Prime Business Systems  
Susan Prince '75  
Kenneth & Janet Brown Quintal '70  
Mr. & Mrs. Bernard Rafferty  
Joanne Casacio Regli '63  
Mary Ann Restall  
Joan Toohey Rochford '52  
M. Gervase Rosenberger '73  
in memory of Rita Schubert  
Rosenberger '44  
Trudy Carlin Rutledge '63  
Barbara Spiro Ryan  
Mr. & Mrs. Arthur P. Ryan, III  
(Mary Kaufmann, '66)  
Mr. & Mrs. John Sabia, Jr.  
Mary T. Sabia  
Stephen G. & Regina Maxwell Schwillie '65  
Mary Lou Sciarrillo '66  
Sempra Energy  
Nadya K. Shmavonian &  
David E. Loder  
Shoemaker Construction Company  
Kathleen McBride Shoup '61  
Sisters of Saint Joseph of Philadelphia  
Harold A. & Ann Rusnack Sorgenti '58  
Susquehanna Patriot Bank  
Stradley Ronon Stevens & Young, LLP  
Kathleen McDermott Strott '59  
Lucile Sweeny '39  
Angela Clement Tague '61  
Robert & Anne Brannan Teufel '60  
Anne E. Tezak '76  
In memory of Catherine & Luke Trench  
Clara Tucker '52  
Eleanor Craig Utzig '56  
Kathleen M. Wagner '60  
in memory of Mary and  
William Wagner  
Harry & Marianne McGurk Wallaesa '87  
Margaret Seidel Walton '66  
Mary Gallagher Wattis '60  
Richard Wrona  
Selma Koury-Wunderlich '53  
in memory of David and Mary Koury  
Bob and Carol Lockyer  
A. Clarice Zaydon, M.D. '70  
Ronald & Carol Voelmle Zemnick '75

## PRESIDENT'S CIRCLE

### Founders Society

(\$100,000 to \$999,999)

Mr. & Mrs. John R. Cochran, III  
Anne O'Shea Devlin '64  
✧ The Navesink Foundation  
(J. Hugh & Anne O'Shea Devlin '64)

### Griffin Society

(\$50,000 to \$99,999)

W. W. Smith Charitable Trust

### Logue Society

(\$25,000 to \$49,999)

Anonymous  
Anonymous  
Estate of Harold Burns, M.D.  
✧ Suzanne K. Dufasne '58  
Mr. & Mrs. Francis J. Dunleavy  
✧ Rocco & Barbara Martino Foundation  
(Barbara D'lorio Martino '60) (D)  
✧ Margaret Carney McCaffery '77  
Clarence A. Rowell Fund  
✧ Bill & Trudy Rutledge Foundation  
(Gertrude Carlin Rutledge '63)

### Fontbonne Society

(\$10,000 to \$24,999)

✧ Beneficial Savings Bank  
✧ Dr. Elizabeth M. Bowden  
✧ Judith E. Campbell '69 (M) (D)  
✧ Chestnut Hill College Alumnae and Alumni Association  
Arthur Lanman Trust  
✧ Frank & Patricia Crane Lynch '54  
Meniscus Limited  
(Lois Trench-Hines '64)  
Moore Cadillac Company  
(Jacques & Blanche Haviland Moore '50)  
New York Life Insurance Company  
✧ The Philadelphia Trust Company  
(Michael & Margaret Hughes Crofton '84)  
The John C. & Kathryn S. Redmond Foundation  
Semptra Energy  
Harold and Ann Sorgenti Family Fund  
(Ann Rusnack Sorgenti '58) (D)  
✧ Robert & Ann Brannan Teufel '60 (D)  
John Walker  
✧ Harry & Marianne McGurk Wallaesa '87, '92 SGS (D)

### Fournier Society

(\$5,000 to \$9,999)

Joseph & Bernardine Keeler Abbott '51  
Crown Holdings, Inc.  
Estate of John M. Donohie, S.J.  
✧ Estate of Maria Stillmun  
Goldschmidt '33  
✧ E. Michelle Sprague Guerard '66 (M)  
Sandra Denenberg Hohberger '66  
Keough Electric, Inc.  
James Lesser  
✧ Mr. & Mrs. Robert Lockyer  
Ms. Patricia Lyons  
✧ Samuel P. Mandell Foundation  
(Miriam Gibbons Mandell '63) (D)  
✧ Francis X. & Nonie Glennon  
Murphy '66  
✧ Frances McCullen Pierce '63  
✧ Lois Berroddin Pope '55 (D)  
✧ Janet Brown Quintal '70 (M)  
Russell Roofing Company  
The Haverford Trust Company  
Thomas Wynne, LP

### Clement Society

(\$1,000 to \$4,999)

Patricia May Agger '63  
Susan Kanehann Ahmad, M.D. '77  
✧ Rosalie Reardon Albers, M.D. '39  
Alliance Bank  
Amerada Hess Company  
✧ The Arthur Jackson Company  
Association of Independent Colleges and Universities  
Atlantic Women's Colleges Conference  
✧ Lorraine Aurely '71 (A)  
Anastasia Hagan Bacon, Ed.D. '60  
✧ Martina McCarthy Ball '66  
✧ Maude Meehan Belli '49  
Joan McDermott Bellwoar '55  
Miss Emma Lou Benignus \*  
✧ Carolyn Bensel, Ph.D. '63  
Marie Pelliccio Berenato '57  
Marion Williams Berry '63  
Margaret Betz, Ph.D. '71  
✧ Catherine Lockyer Bitting '92 (D)  
Pamela Ann Black '64  
✧ Clare Hamilton Bohnett '71  
Kathleen Clauss Borkowski '68 (M)  
✧ Mr. & Mrs. John P. Borneman  
Mary E. Brandt, Ph.D. '76  
✧ Kathleen Donahue Bruyere Capt.,  
USN, Ret. '66  
Doris M. Byrnes '49

Jacinta Lam Chang '65  
Young-shin Chang '59  
Class of 1945  
✧ Gloria Perla Coe '46  
Community Foundation of New Jersey  
✧ Mary Connolly '50  
Elizabeth Marron Cooper '71  
✧ Mary Lee Rothwell Corr '60  
Country Day School of the Sacred Heart  
✧ Joan Coyne '52 (M)  
Ms. Pam Cyr  
✧ Alice Ann Gricoski Dachowski, M.D. '77  
✧ E. Loretta Daly '47  
✧ Frank & Elaine Bennett Davey '65 (D)  
✧ Mrs. Deborah Davies  
Mary DeCandido '53  
✧ Deloitte & Touche, LLP  
✧ Eileen O'Rourke Deneen '54  
✧ Mary Katherine Schubert Denny '40  
Caroline Devine '72  
✧ Adelaide DiBerardino '48  
✧ Marie DiBerardino, Ph.D. '48  
Jeanne Collins Donovan '62  
✧ Mr. & Mrs. John Doody  
Valerie DeFelice Downing '95 SGS  
✧ Barbara Middlebrook Doyle '53  
✧ Suzanne Schulz Dressler '71  
Drexel University  
Diane Driscoll, SSJ '63  
✧ Duane Morris, LLP  
Jane Wilson Dunne '50  
✧ Joan Mathers Eaves '52  
Devorah Rosenberger Eckhart '79  
Marian Byrne Ellis '55  
Patricia Hickey Fabricius '55  
✧ Barrie Thomas Fahey '39  
Fenningham, Stevens & Dempster, LLP  
✧ Joanne Fink '76  
First Keystone Federal Savings Bank  
Mary Catherine Fitzsimmons '74 (M)  
Rosemary McCarron Flannery, Esq. '43  
✧ Deborah Dougherty Flint '59  
✧ Mary Gallagher '70  
✧ Mr. & Mrs. Stephen Gardner (D)  
Garrison Printing Co., Inc.  
Kathleen Gavigan, Esq., Ph.D. '62  
✧ Marcia Gehman, SSJ '63  
Mr. & Mrs. Laurence Genuardi  
✧ Robert Glackin (M)  
✧ Mary Isabel Lambert Glenn '61 (M)  
Marie Sclafani Goldkamp '65  
Ellen Young Greenlee, Esq. '58  
✧ Patricia Tichenor Greer '62  
✧ Helen Gruber '52  
Carol-Jane Piltz Guardino '66 (M)  
✧ The Gulati Family Foundation Trust  
✧ Isabelle Walsh Gundaker '65  
✧ Elizabeth Du Ban Hansen '51  
✧ Frances McCarron Harper '48  
✧ Catherine Griffiths Harrison '98 SGS  
✧ Haverford Trust Company  
Nan Hechenberger, Ph.D. (D)  
✧ Shirley Kieser Hoberg '47  
Virginia A. Hogan '53  
The Honickman Foundation  
✧ Mrs. Quita W. Horan  
✧ Gwendolen Forsyth Hurley '58 (M)  
✧ Judith Bourgeois Jensen '60  
J.J. White Inc.  
Kal & Lucille Rudman Foundation  
✧ T. James Kavanagh Foundation  
Eva Meehan Keating '43  
Mary Ann Keegan '45  
✧ Wilma Carson Kellerman, M.D. '55  
Stephanie King, M.D. '79

✧ Julia Heitzman Koechlin '66  
Kathleen Herzog Larkin, Esq. '67  
Catherine A. Hohmann  
Lederhaas '62 (M)  
✧ Rosemary Hagan Lignelli '58  
The Christian R. and Mary F.  
Lindback Foundation  
Thomas Lynch  
Magarity Chevrolet  
Anthony Maglio, Jr.  
✧ Peggy Grant Malone '46  
✧ Katherine Marschall, M.D. '69  
The Martin Foundation  
Dorothy Wludyka Matthews, M.D. '54  
Kathleen McNulty  
Mauchly-Antonelli '42  
✧ Joanne McFadden McBride '63  
✧ Maureen Rykowski McCarthy '02 SCS  
✧ Catherine Winter McDonnell '45  
Joan Wood McEnaney '53  
Mrs. Cornelia McGill  
Jeane Rossberg McGinn '53  
✧ McHugh & Associates, Inc.  
Loretta M. McLaughlin '74 SCS  
Ms. Katherine Mezzanotte  
& James Bielunas (S)  
Nancy Torrese Milani '57  
✧ Anne Duffy Mirsch '52  
Margaret Quinn Mohr '58  
✧ Anne Moore '51  
✧ Blanche Haviland Moore '50  
✧ Helen Kenny Motzenbecker '50  
✧ Frances McCormick Murphy '73  
✧ Mary O'Gorman Murray '74 (M)  
✧ Duane Sweeney Nelson '42  
✧ Angela Mason Nolan '42  
Dorothy O'Brien '50  
✧ Shaun O'Malley  
Anna Connor O'Riordan, M.D. '53  
✧ Margaret Richardson O'Rourke '51  
✧ Mary Elizabeth Ounsworth '92 SCS  
✧ Mr. & Mrs. William Page  
Estate of Edith Palermo  
Jo Ellen Noonan Parsons '66  
Joanne Pascuzzi '58  
Kathleen Peditto, M.D. '80  
✧ Patricia Harper Petrozza, M.D. '74  
✧ The Philadelphia Contributionship  
✧ Susan M. Pisano '71  
✧ Prime Business Systems  
✧ Susan Prince '75  
✧ Mr. & Mrs. Bernard Rafferty (M)  
Rainer & Company  
Patricia Johnson Rauch, Ph.D. '55  
✧ Joanne Casacio Regli '63  
Religious of the Assumption  
Miss Joanna Renzi  
✧ Mrs. Mary Ann Restall  
✧ Joan Toohey Rochford '52  
✧ M. Gervase Rosenberger, Esq. '73  
✧ Mrs. Barbara Spiro Ryan (D)  
✧ The Mary L. Ryan & Arthur P. Ryan, III  
Family Fund (Mary Kaufmann  
Ryan '66)  
✧ John Sabia, Jr. (D)  
✧ Ms. Mary T. (Molly) Sabia  
D. M. Sabia & Co., Inc.  
Jean Schwartz, M.D. '55  
✧ Regina Maxwell Schwillie '65 (M)  
✧ Mary Lou Sciarillo '66  
✧ Ms. Nadya K. Shmavonian (D)  
✧ R. M. Shoemaker Company  
✧ Kathleen McBride Shoup '61  
Stephanie O'Connell Siegrist, M.D. '84  
✧ Ann Rusnack Sorgenti '58 (D)  
Mary Schuhsler Spangler, Ed.D. '64  
Sara Young Stoll '62  
✧ Stradely Ronon Stevens & Young, LLP  
✧ Kathleen McDermott Strott '59 (M)  
Katherine Roach Sullivan '63

✧ Susquehanna Patriot Bank  
✧ Lucile Sweeny '39  
✧ Angela Clement Tague '61  
✧ Anne E. Tezak '76 (M)  
✧ Lois Trench-Hines '64  
Tri-State Telecommunications, Inc.  
Rev. Raymond Tribuiani (S)  
✧ Clara Tucker '52  
✧ Eleanor Craig Utzig '56  
✧ Kathleen Wagner '60  
✧ Margaret Seidel Walton '66  
Ignatius Wang (D)  
✧ Mary Gallagher Wattis '60  
✧ Mr. & Mrs. Richard Wrona  
✧ Selma Koury-Wunderlich '53  
Jeanne Marx Young '49  
✧ A. Clarice Zaydon, M.D. '70  
✧ Ronald & Carole Voelmle  
Zemnick '75 (D)  
✧ 160over90

## HALLMARK SOCIETY

*Members of the Hallmark Society have expressed their commitment to Chestnut Hill College through a very special and important form of financial support. These donors have named the College as the ultimate beneficiary of a planned gift. Such gifts might include a bequest and/or charitable income gifts, such as charitable gift annuities, charitable remainder unitrusts, charitable remainder annuity trusts, or gifts of life insurance.*

Bernadine Keeler Abbott '51  
Anna M. Barone '57  
Marita O'Reilly Beckum, Esq. '61  
Margaret Betz '71  
Elissa Imbriaco Breiling '61  
Catherine Gallagher Brockway '51  
Madeline Conti '40  
Joan Coyne '52  
Marjorie Piga Crain '48  
Elizabeth A. Croake '52  
Suzanne K. Dufasne '58  
Sally Donnelly '53  
N.A. Gillen '69  
Lynn Cozza Goodman '63  
Helen A. Gruber '52  
Joan Burnham Guokas '40  
Cecile Heebner Knies '63  
Mathilde Wackerman Higgins '38  
Mary-Jo Heile Hogan '48  
Kathleen C. Griffith Keene '68  
Margaret Mary McDermott Keeler '57  
Wilma Carson Kellerman '55  
Noriko Kikumoto '92  
Patricia Kilmartin '40  
Elizabeth Harvey Majane '57  
Elizabeth Meehan  
Joan Menaquale '53  
Lisa Rounds Miles '82  
Ellen Miller '57  
Anne Moore '51  
Kathleen O'Pella '76  
Dorothy Palatucci '64  
Christine Westrum Porter '94 SCS  
M. Nancy Burczewski Portland '64  
Joan Toohey Rochford '52  
Mr. & Mrs. Thomas Schriver  
Clare Shanahan '56  
Christine Desrochers Smith '60  
Anne E. Tezak '76  
Maureen Schmidt-Thielens '62  
Andrea Wargo, Ph.D. '72

Names are included in categories based on the donor's total contributions, for all purposes, received between July 1, 2004 and June 30, 2005. Percentage of class participation is listed next to class year.

### Donor List Designations

- A – Chestnut Hill College Administration
- D – Chestnut Hill College Board of Directors
- F – Chestnut Hill College Faculty
- M – Matching Gift
- S – Chestnut Hill College Staff
- SCS – School of Continuing Studies
- SGS – School of Graduate Studies
- \* – Deceased
- ✧ – *Fleur de Lis* Society

## TRIBUTE FUND

DURING THE FISCAL YEAR 2004-2005, CHESTNUT HILL COLLEGE RECEIVED CONTRIBUTIONS IN HONOR OF OR IN MEMORY OF THE FOLLOWING INDIVIDUALS.

### IN HONOR OF

Grace Corr Haenn '54  
Harold Irwin  
Ellen Logue  
Matthew Anita  
MacDonald, SSJ, Ph.D. '60  
Dorothea Newell, SSJ  
Anne and Nicholas Salvatore  
The Sutton Family  
Holly Walker '05

### IN MEMORY OF

Leonard Amoroso, Sr.  
G. Delmar Bennett  
Frederick Betz  
Edward Brannan  
Margaret Conway Burns '32  
Josephine Cataldi  
Shant Chibocian  
George Copen  
Dolores McFadden Cote '75  
Mary Delaney  
John Donohie, S.J.  
Jane Harney Donovan '45  
Ellen and Jack Fitzgerald  
Patrick Marie Flood, SSJ  
Mary Birney Foley '38  
Paul Gattuso  
Mary Hannigan '37  
George & Getrude Cleary-Hartnett '39  
Marie Malachowski Heaton, Ph.D. '53  
Virginia Keeler '53  
Maria Kostka, SSJ  
Grace Voight Kozard '83  
Regina Franco Kriskey '58  
John Logue  
Eva Maria Lynch, SSJ, Ph.D.  
Jean Marum '52  
Orlando Mazotta  
Charles Mazzella  
Kathryn Kelly McFadden '36  
Jane Donnelly McGoldrick '53  
Dorothy Miller  
Ellen and Jim Ounsworth  
Mary Papiro  
Joseph Pavell, Sr.  
Frank Petullo, Jr.  
John Rochford  
Gertrude Rodrigues  
Elizabeth Rosenberger  
Nayda Emanuelli Saris '46  
Sylvia Scheirer  
Anne Delaney Smith  
Carline Sumeck  
Ethel Thomas Taylor '46  
Louise Terrace  
Gerald & Elizabeth Oswald Wible '39

## CLASS GIVING 2004–2005

### CLASS OF 1933 (100%)

#### *Fournier Society*

✧ Maria Stillmun Goldschmidt Estate

#### *Donors*

Kathryn Brown Davis  
Teresa Mahoney McGeary

### CLASS OF 1934 (100%)

#### *Donors*

Rita Henderson  
Mary Rose Dougherty Jenemann  
Anne Millen Mayo  
Norma Zusi

### CLASS OF 1935 (22%)

#### *Donors*

Bettina Clemons Juers  
M. Irene Testa Rotella

### CLASS OF 1936 (36%)

#### *Donors*

Margaret Sword Blackmon  
Ruth McGillicuddy Clark  
Mathilde Wackerman Higgins  
Irene Doran Robertson

### CLASS OF 1937 (45%)

#### *Donors*

Elizabeth Shultz Arendt  
Rita Schwartz Boyle  
Blanche Byrnes  
Leonore Smith Crowley  
Dorothy O'Neill Cashman (M)  
Harriet Fitch Fitzgerald  
Mary Higgins Langan  
Ada Gonzalez Prieto  
Mary Lentz Schuhsler

### CLASS OF 1938 (16%)

#### *Donors*

Mary Fleming  
Anne Reitano Walsh  
Ruth Fischer Weber

### CLASS OF 1939 (26%)

#### *Clement Society*

✧ Rosalie Reardon Albers, M.D.

✧ Lucile Sweeney

#### *Donors*

Angela Schott Long  
Eileen Finucane McKenna  
Leonore O'Connor O'Hara  
Mary Thompson Wagman

### CLASS OF 1940 (61%)

#### *Clement Society*

✧ Mary Katherine Schubert Denny

#### *Donors*

Margaret Kelly Baumgardner  
Regina Brimmer, SSJ (S)  
Kathleen McGarity Burns  
Jean Abendroth Conroy  
Madeline Conti  
Joan Burnham Guokas  
Marie Barry Kazal  
Patricia Kilmartin  
Lee Bailey MacMurtrie  
Freda Gorelick Oben  
Mary Barbara O'Neill Philpott

Margaret Walsh Ryan  
Rachel Scarpello, RA

### CLASS OF 1941 (32%)

#### *Donors*

Alice MacMunn Burke  
Eugenia Cooper Comerford  
Jessica Cobrin Goodman  
Elizabeth Richardson Kelly  
Regina Manson Kemp  
Iris Stella MacRae  
Mary McCabe  
Eleanor Weth McMahan  
Ruth Mulligan  
Rita Cresci Quinn

### CLASS OF 1942 (36%)

#### *Clement Society*

Kathleen McNulty Mauchly-Antonelli

✧ Jeanne Sweeney Nelson

✧ Angela Mason Nolan

#### *Donors*

Mary Gorman Brown-Jednak  
Muriel Stevenson Callahan  
Lorraine Delafrange Deeney  
Madeleine Bennis Degnan  
Katherine Hinchey Forsythe (M)  
Rita Cook Lade  
Delia Schiavi Melograna  
Regina Baust O'Donnell  
Frances Bilas Spence  
Phyllis Martin Upham

### CLASS OF 1943 (59%)

#### *Clement Society*

Rosemary McCarron Flannery, Esq.  
Eva Meehan Keating

#### *Donors*

Margaret Conner  
Camelia Gallardo Eisenhart  
Mary Claire Dougher Filippelli  
Betty Lou Froustet  
Catherine Austermehele Hrybyk  
Aileen Murphy Johnson  
Ursula O'Reilly Kennedy  
Jane Faunce King  
Adele Przybylowski Majka  
Mary Blanche McCann  
Dorothy Wack McMahan  
Louise Sullivan O'Connor  
Ave Little Rawdon  
Joan McCarthy Stief

### CLASS OF 1944 (43%)

#### *Donors*

Jane Delaney Blank  
Margarita Cardus Bohm  
Sarah Hodson Connor  
Marion Yandell Liebert  
Geraldine Kelly McDonough  
Anna Stawitzke Mooney  
Juanita Ripoll Moore-Koecher  
Lucille Cox Novotny  
Dorothea Buchy O'Connor  
Shirley Blumenthal Perch  
Mary Frances Hensler Pié  
Mary Lou Fuhrmann Pitman  
Katharine Toland Quinn  
Ann Robrecht Rhodes  
Helen Cunningham Roney

### CLASS OF 1945 (39%)

#### *Clement Society*

Mary Ann Keegan

✧ Catherine Winter McDonnell

#### *Donors*

Vera Kolarsick Balceniuk  
Marisa Castro Chafey, M.D.  
Ann Holloway Charlesworth  
Camilla Wagner Checchio  
Mary Catherine O'Brien Fallon (M)  
Joan Cunningham Kelley  
Claire Willette Laskas  
Rosalie Rochlitz McGrain  
Ann Donohue Metz  
Jacqueline Carroll O'Donnell  
Claire Sweeney Regan  
Elizabeth Moonan Tome  
Pia Badt Troutman (M)  
Eleanor Kirk Wilson

### CLASS OF 1946 (43%)

#### *Clement Society*

✧ Gloria Perla Coe

✧ Peggy Grant Malone

#### *Donors*

Anne Locke Bansbach  
Anna Marie Hummert Bertram  
Nancy Curtis Duzy  
Jean Rouault Galloway  
Mary Therese Joyce (M)  
Margaret Boyle Mahon  
Marjorie Erickson McDevitt  
Margaret Flaherty McFarland  
Elizabeth MacFarland McKeown  
Rita Squires Meehan (M)  
Rose Sophy Molin  
Philomena O'Hanlon  
Barbara Wilderotter Rinkor (M)  
Nayda Emanuelli Saris, M.D.  
Roberta Pike Semmett  
Mary O'Connor Sweeney  
Joan Kinney Yanni

### CLASS OF 1947 (47%)

#### *Clement Society*

✧ E. Loretta Daly

✧ Shirley Kieser Hoberg

#### *Donors*

Rita Luczynski Brzezinski  
Annette Heitzman Buckley  
Rosemary Cullen  
Marjorie Bath Dillon  
Elizabeth Brown Foley  
Anne De Venuto Grey  
Jeanne Carpenter Hanes-Romano  
Marian McCreary Heckerman  
Patricia Garrity Kasper  
Ellen Logue  
Helene Boffa McGuinn  
Muriel Farrell McDonnell  
Patricia Mickleburgh McIntire  
Jeanne Grant O'Neill  
Eileen Regan Plichta  
Juanita Covas Swain  
Nellie Gonzalez Trilla  
Marianne Connor Warnick  
Mary Alice Dick Zink

### CLASS OF 1948 (55%)

#### *Clement Society*

✧ Adelaide DiBerardino

✧ Marie DiBerardino, Ph.D.

✧ Frances McCarron Harper

#### *Donors*

Mary Jane Dougherty Barry  
Marie Badecker Benas  
Mary Swingle Buns  
Claire Little Burton  
Ann Donoghue Conley  
Marjorie Piga Crain  
Anne Reardon Cummings  
Catherine Stroud DelDuca  
A. Klair McGlynn Filarsky  
Mona Hughes Harwood  
Eleanor Newell Hofkes  
Mary-Jo Heile Hogan  
Adele Pudrowski Hudson  
Catharine Kiely Leydon  
Faith Patterson MacDonald  
Anne Keeler McBride-Manion  
Mary Claire O'Keefe McIntyre  
Mary Ellen McVeigh  
Helen Laragh Meade  
Loretta Moya  
Jeanne Stief Murphy  
Janet Smith Murphy (M)  
Catherine Wilson O'Brien  
H. Jacqueline Jaixen Rabinovitz  
Mary Frances Reilly Rochford  
Doris Black Schaefer  
Doris Kamp Shaffer  
Rita Ayerle Shoemaker (M)  
Mary Anne Campbell Simons (M)  
Marguerite D'Auria Szawlewicz  
Ruth Hummel Vezzosi  
Margaret Schachte Wells  
Helen West (M)

### CLASS OF 1949 (38%)

#### *Clement Society*

✧ Maude Meehan Belli

Doris M. Byrnes

Jeanne Marx Young

#### *Donors*

Patricia Tully Bannan  
Patricia Elder Bonacarti  
Eileen Casey Cadden  
Madeleine Murray Collins  
Tullia Giordano Conboy (M)  
Edna Hanlon Cooney  
Mary Grace Coleman Crerand  
Elizabeth Webb Dixon (M)  
Helen Austermehele Dykhoff  
Isabel O'Connor Egan  
Rita Sokol Eisler  
Carmen Echevarria Garcia  
Irene Smith Gillespie  
Ellen Kiernan Hetzel  
Lillian McBride Jacobs  
Kathleen Allen Kehoe  
Margaret McCloskey Kiely  
Florence Jurewicz Korzinski  
Marilyn Schuler Lynch  
Anna Gene Hurst Madonna  
Helen Beatty McBride  
Miriam Esther Naughton, SSJ  
Mary McManus  
Moyra Siu Moy, M.D.  
Marylou Morgan Mullen  
Regina Brennan Origoni  
Lucy Piotrowska, M.D.  
Lorraine Gardner Rogers  
Carolyn Stemmler (M)  
Patricia Bushey Stuhr  
Joan Loughlin Welch

### CLASS OF 1950 (67%)

#### *Clement Society*

✧ Mary Connolly

Jane Wilson Dunne

✧ Blanche Haviland Moore

✧ Helen Kenny Motzenbecker

Dorothy O'Brien

#### *Donors*

Irma Ashenbrenner  
Dolores Everling Audet  
Jacqueline Menapace Bolger  
Mary Connor Brandt  
Maria Meissinger Breitinger  
Joan Eisenhower Cassidy  
Barbara MacCausland Clarke  
Frances Horan Del Duca, Esq.  
Mary Ann Dempsey  
Rosemary McGranery Dougherty  
Helen Robertshaw Emge  
Mary Levin Englebert  
Joan McGuigan Evans  
Rita Cianciarulo Grayum  
Elizabeth Meier Greene  
Shirlee Repak Gubernat  
K. Patricia Carville Haley  
Berna Schmidt Herrick  
Ruth Horcher, M.P.H.  
Mary Crecca Kenny  
Marie Rosato King  
Gerda Steinhauer Koetter  
Helen Kurz  
Elizabeth U. Laufer, M.D.  
Therese Martin Lehigh  
Mary Pfister Lodes  
Elizabeth Beierschmitt McGee  
Regina Casey McGinley McLean  
Margaret Vernon McLaughlin  
Mary Frances Donoghue O'Donnell  
Virginia Mitchell O'Neill  
Mary Vernier Ozzello  
Margaret McKernan Pfeifer  
Idamarie Stief Quigley  
Frances Reid  
Kathleen Wood Rhoads  
Rosemary Carr Rinehart  
Virginia Grant Robinson  
Rosemary Campbell Romasco (M)  
Sally Quinney Ryan  
Patricia Stillmun Shelton  
Mary Dunegan Siebert (M)  
Janet Piedmonte South  
Marie-Hogan Sullivan  
Margaret Weber Sullivan  
Veronica Petrusky Suppa  
Marianne Taulane  
Mary O'Connell Truschel  
Joan Ritterbeck Venino  
Josephine Getman Von Jess  
Nancy Dougherty Ward  
Lillian Ghillani Waugh  
Ann Meagher Williams  
Frances Pickess Woods  
Helen Zeiser

### CLASS OF 1951 (59%)

#### *Fournier Society*

Bernardine Keeler Abbott

#### *Clement Society*

✧ Elizabeth Du Ban Hansen

✧ Anne Moore

✧ Margaret Richardson O'Rourke

#### *Donors*

Elizabeth Allen  
Rosemary Pasta Armore  
Bernadette Power Barnhurst  
Patricia Whalen Bolger  
Angela DeSantis Boyle  
Catharine Gallagher Brockway  
Caryl Brown  
Phyllis Metz Carroll  
Ann Pirundini Cartledge  
Carolyn Baldino Conboy  
Mary Mahoney Corini  
Agnes O'Loughlin Danella  
Barbara Murray Dennen  
Kathleen Gillespie  
Patricia Higgins Green  
Theresa Hunt Imms  
Barbara Alexander Kegelmeyer  
Patricia Boston Kelly  
Phyllis Basenfelder Kennedy (M)  
Suzanne Gleason Kennedy  
Joan Amberg Kineke  
Helen Gross King  
Joan Fitzpatrick Marvin  
Micheline Paquet McCracken  
Joan McEntee Monfalcone  
Nancy Schmidt Murphy  
Mary Elizabeth Murphy Murray  
Mary Jane Earley Nagle  
Sally Dolly Nester  
Ellen Mullany O'Laughlin  
Adelaide Brothers Palmer  
Bernadette Fortune Pettine  
Joan Reardon  
Helen Miller Sexton  
Genevieve Koehler Sweet  
M. Regina O'Neill Thomas  
Therese Zogby

### CLASS OF 1952 (53%)

#### *Clement Society*

✧ Joan Coyne (M)

✧ Joan Mathers Eaves

✧ Helen Gruber

✧ Anne Duffy Mirsch

✧ Joan Toohy Rochford

✧ Clara Tucker

#### *Donors*

Mary Beth Oakes Barba  
Mary Merz Berko  
Pura Bigles Brennan  
Mary Ellen Carroll Brown (M)  
Barbara Carli  
Claire Harrison Cocklin  
Ruth Wingel Doyle  
Katherine McHugh Enck  
Elise Gutekunst Gallagher  
Bettyanne Geikler  
Mary Alexander Graham  
Beatrice Granger  
Mary Clare Martin Guinther  
Faith Olearo Haskew  
Louise Burgoyne Kane  
Marie McDermott Keeley  
Geraldine Menzler Kelsey  
Joan Gerard Larkin  
Elizabeth Dinan Lutz  
Louise McCoy  
Dolores Sulzbach McDevitt  
Dorothy Zeller Miller  
Margaret Stehli Morris (M)  
Anne Toroni Murdock

Joyce O'Neill  
Marita Howard O'Rourke  
Cornelia McCue Rath  
Laura Hentz Remmey  
Joan Murray Reynolds (M)  
Marina Comas Ruiz  
Mary Jane Mogeey Shelly  
Therese Dickinson Sullivan  
Helen Branagan Thomas  
Lorene Cardinal Welsh

#### CLASS OF 1953 (54%)

##### *Clement Society*

Mary DeCandido  
✧ Barbara Middlebrook Doyle  
✧ Virginia A. Hogan  
Joan Wood McEnaney (M)  
Jeane Rossberg McGinn  
Anna Connor O'Riordan, M.D.  
✧ Selma Koury-Wunderlich

##### *Donors*

Rita Ciotti Altman, Ed.D.  
M. Justine Smith Atkins, D.A.  
Marion Morris Bergan  
Margaret Smith Braca (M)  
Jane McGuckin Buczkowski  
Patricia Malloy Cavanaugh  
Elaine Burchill Corcoran  
Annette Seiler Coyle  
Peggy Anne Derham Dolan  
Eileen Murray Doman  
Sally Donnelly  
Constance Peacock Feraco  
Charlotte McClaskey Friel  
Mary Silcox Gleason  
Gloria Massey Harkins  
Ann Wright Heenehan (M)  
Colette Robillard Kelly  
Rosanne Bonner Kendra  
Eileen Kelly Lammers  
Maureen Reilly Leonhardt  
Eileen Connors Linehan  
Margaret O'Neill Lipinski  
Patricia Wallace MacGillivray  
Barbara Piga Marcouiller  
Mary Martire  
Patricia McDonald  
Kathleen Canedo Mee  
Joan Menaquale  
Rhoda Dietrich Nary  
Lillian Nash, M.D.  
Nancy Leonard O'Connor  
Agnes Dorasavage Palko  
Joan Eichenberg Sinclair  
Louise C. Torraco  
Helene Hornyak Tuckwood  
Carmen Costanza Veit

#### CLASS OF 1954 (50%)

##### *Fontbonne Society*

✧ Patricia Crane Lynch  
*Clement Society*  
✧ Eileen O'Rourke Deneen  
Dorothy Wludyka Matthews, M.D.

##### *Donors*

Carol Enright Bell  
Marie McCriden Burke  
Joan Alford Callahan  
Rose Ann Baron Clarke  
Maureen Newman Considine  
Madeleine Gercke Costigan  
Katherine Rickert Coulson, Ph.D.

Clara McNierney Doyle  
Muriel Watman Dreswick  
Roberta Bushey Glackin  
Grace Corr Haenn (S)  
Margaret Higgins  
Anne Smith Jahn  
Anne Branagan Letter  
M. Elizabeth Logan  
Joanne McWilliams Martin  
Barbara Uttinger Martin  
Ann Brosseau McCall  
Marguerite Barrett McEwen  
Mary Lou Stafford McGill  
Jeanne Meehan McIntyre  
Joan Shelley McLaughlin  
Ernestine Petorella Medeck  
Mary Resinski Murphy, M.D.  
Catherine O'Flaherty  
Elizabeth MacDuffie Reger (M)  
Janice Arleth Reilly  
Maria MacCabe Ronca  
Mary Jane Maher Smith  
Joan McCafferty Stapleton  
Jane Maguire Starke  
Judith Sullivan  
Elizabeth Krug Ulrich  
Anita Esposito Varga  
Aileen Maguire Walsh  
Irene A Wagman Zielinski (M)

#### CLASS OF 1955 (61%)

##### *Fournier Society*

✧ Lois Berrodin Pope

##### *Clement Society*

Joan McDermott Bellwoar  
Marian Byrne Ellis  
Patricia Hickey Fabricius  
✧ Wilma Carson Kellerman, M.D.  
Patricia Johnson Rauch, Ph.D.  
Jean Schwartz, M.D.

##### *Donors*

Hilda Casanave Bertotti  
Mary Juel Rockwell Boast  
Joan Yates Carroll  
Helen Devine Coen  
M. Carol Snyder Collins  
Kathleen Buhrman Dalena (M)  
Joanne Rossberg De Santis  
Mary Ann Kenny Devine  
Joanne Waldron Dwyer  
Marilyn Schmitt Fungaroli  
Eva Raieta Girone  
Catherine Condon Johnston  
Margaret Rohach Kalandiak  
Jane Keating  
Sonia Bredderman Kolota  
Joan Kay Lally  
Lois Steppacher Lazzarino  
Suzanne Hoban Matunis  
Dorothy Stemmler Maurer  
Barbara McGurn  
Margaret McKenna, SCMM, Ph.D.  
Kathleen Masse Minutella  
Mary Louise Cush Moore  
Janice Moran, SND  
Barbara Beers Oberle  
Mary Elizabeth Peek  
Frances Costa Peters  
Mildred Renner Pfeifer  
Carolyn Deiter Piccone  
Joan Perneti Rees  
Judith Dougherty Reidy

Raquel Rodriguez-Rexach  
Barbara Ellis Ryan  
Elvira Cordasco Sax  
Patricia Gallagher Starkey  
Joan Custer Storm  
Renee Hipkins Tracey  
Gwendolyn Feaster Trautwein  
Sally Anne Walsh

#### CLASS OF 1956 (48%)

##### *Clement Society*

✧ Eleanor Craig Utzig

##### *Donors*

Maryann Wessel Beitel  
Martha Berry  
Janet Rutan Bowers  
Barbara Costigan Brennan  
Ellen Whiteside Byrne  
Catherine Malloy Byron  
Beverly Kray Connolly  
Christine Brennan Conover  
Beatrice T. Jungblut Dante  
Charlotte Branagan Farley  
Mary Jane Gillespie  
Anne Daly Holland  
Jane Ellen Higgins Kelly, Ph.D.  
Betty Amici Larson  
Esther Moriarty McCarthy (M)  
Lorraine Sukalski McGlynn  
Marianne Miller  
Patricia Belcher Monaghan  
Marth Hentz Murray Estate  
Barbara Griffiths Olivieri (M)  
Martha Freiling Peterson (M)  
Maryanne Franklin Rodzewich  
Carroll Griffey Ryan  
Marylou Dughi Sklar  
Agnes Costello Walker  
Patricia Andris Walsh  
Lynn Murray White  
Joan Huber Winters (M)

#### CLASS OF 1957 (57%)

##### *Clement Society*

Marie Pelliccio Berenato  
Annunciata Torrese Milani

##### *Donors*

Marie Meaney Adolph  
Anne Dever Bancroft  
Anna M. Barone  
Constance Murray Becker  
Rosemary Mahoney Boyle  
Letitia Smith Brown (M)  
Ann Gallen Buckley  
Anne Senser Byrne  
Mary Ellen McClain Carson  
Rosemarie Schmitt Clark (M)  
Margaret Walsh Davies  
Maryanne Rafferty Dunmire  
Patricia Carey Dunne (M)  
Mary Jane Harford Ferro  
Eileen Gillis Francke  
Roseann Pullekines Haggerty  
Jean Williams Harris  
Lois Heiart  
Kathryn Peters Hill  
Audrey Ward House (M)  
Karolyn Beran Huber  
Barbara Dunn Hunter  
Margaret Mary McDermott Keeler  
Roxanne Talley King  
Elizabeth Harvey Majane

Theresa Mazeika (M)  
Ellen McKeon McCann  
Mary Spence McCue  
Margaret McNierney McPhillips  
Irene Nowak Musman  
Suzanne Sullivan O'Brien  
Diane Napoli O'Grady  
Joan McGrath Reynolds (M)  
Patricia O'Hara Rutter  
Rosemary Peacock Rychlewski  
Ann Malaney Savage (M)  
Joan McFadden Sawoski  
Lynne Fowler Scarpiello  
Kathleen Gercke Silk  
Katherine Labrecque Skiba  
Phyllis Sullivan Stacy  
Miriam Fenerty Sullivan  
Rosemarie Walsh Taima  
Clare Knapp Taylor  
Helen Axt Turnbull  
Adrienne Wardell  
Carolyn Giblin Webb (M)  
Anne Marie Boehnke Winkle

#### CLASS OF 1958 (56%)

##### *Logue Society*

✧ Suzanne K. DufRASne

##### *Fontbonne Society*

✧ Ann Rusnack Sorgenti (D)

##### *Clement Society*

Ellen Young Greenlee, Esq.  
✧ Gwendolen Forsyth Hurley  
✧ Rosemary Hagan Lignelli  
Margaret Quinn Mohr  
Joanne Pascuzzi  
*Donors*  
Mary Eichhorn Adams, Ph.D.  
Maryanne Hahl Anderson, Ph.D.  
M. Elizabeth Timmins Angulo  
Marianne McKernan Bjorseth  
Mary Dugery Brandenstein  
Clare McConnell Brown  
Loretta Martin Brown  
Jolande Jong Chiu  
Rosemarie O'Brien Cleaver (M)  
Virginia Reilly Coester

Joan Enright  
Elaine Bevilacqua Falco  
Elizabeth Solnek Farrell  
Patricia Gallagher Fleck (M)  
Joan McDermott Forry  
Mary Jane Pasha Franco  
Joanne Fay Gibbs  
Janet McAninley Hallermeier  
Sonia Gotay Hernandez  
Barbara Merck Kearns  
Margaret Garr Knoblock  
Marijane Curtin Lawson  
Marianne Sim Lee  
Joanne Ryan Luecke  
Cecilia Greene McCarthy  
Regina Gercke McConnell  
Maureen Maclean McCord, Esq.  
Anna Marie McKenna  
Angela Romano Moore  
Nora Golden O'Malley (M)  
Mary Pollitt  
Carolyn Inglesby Rusin (M)  
Rosaleen Feehan Seifert  
Deborah Werst Seigman  
Linda Hickey Shappell  
Margaret Walsh Shubnell

Jean Campbell Sterling  
Anna Palermo Streeter  
Ruth Tushup Tierney  
Lois Hoffner Udicious  
Kathryn Hibbs Voit  
Helen Gleeson Wachendorfer  
Dorothy Holmes Wentland  
Anne Butler Wigmore  
Helen McCann Williams  
Janice Kitley Yurasek  
Marguerite Stein Zuccarello (M)

#### CLASS OF 1959 (38%)

##### *Clement Society*

Young-shin Chang  
✧ Barrie Thomas Fahey  
✧ Deborah Dougherty Flint  
✧ Kathleen McDermott Strott

##### *Donors*

Hattie Davey Baier  
Mary Ann Miller Beatty, Ph.D.  
Barbara Burke Berntsen  
Helen Nolan Bishoff  
Miriam Quinn Blimm  
Aminta Woodley Burnett  
Martha Wohlfert Cacciamani (M)  
Margaret Dickinson Campbell  
Janet Gigliotti Corbin  
Anne Caruso Desy  
Kathleen M. Donnelly  
Eleanor Mason Gulczynski  
Charlotte Kelley Hyer  
Joan Niessen Kerby  
Jean Peters Kinney  
Marguerite McCrane Klinger  
Raimonda Binkis Kontrimas  
Katherine Gallagher Langan (M)  
Anita McLaughlin  
Carole Storch O'Dwyer  
Mary Rose Gallagher O'Neill  
Mimi Whiteside Pruett  
Barbara Stoll Russell  
Ann McNamara Scanlan  
Ann Brennan Toner (M)  
Colleen Ward Volpe  
Mary Pat Wallace

#### CLASS OF 1960 (51%)

##### *Logue Society*

✧ Barbara D'Iorio Martino (D)

##### *Fontbonne Society*

✧ Anne Brannan Teufel

##### *Clement Society*

Anastasia Hagan Bacon, Ed.D.  
✧ Mary Lee Rothwell Corr  
✧ Judith Bourgeois Jensen  
✧ Kathleen Wagner  
✧ Mary Gallagher Wattis  
*Donors*  
Carol Cheleden Alcorn  
Kathryn Agle Barry  
M. Claudette Rupp Bayer  
Patricia Doran Benkovic  
Aida Berzins  
Mary Hurley Birch  
Deborah Daly Bohan  
Roseanne Burke Brennan  
Bernadine McGrath Brown  
Marion Giffre Buddo  
Camille Ferro Burns, Ph.D.  
Catherine Budenbender Carolan  
Helen Kates Casey (M)

Margaret Cushing  
Mildred Murphy DeRiggi  
Marie Micale Dumbra (M)  
Jean Nagel Frei  
Eva Marie Vossen Gravenstine  
Eileen Long Hessman  
Anne DePiano Holderness  
Joan Koenig Hynes  
Mary Serroi Jaklevic (M)  
Margaret Michel Johnson  
Patricia Kisielewski Juenger  
Mary O'Neil Keegan  
Susannah Linton Kirchner  
Dolores Dezii Kreal  
Henriette Horchler Leanos, Ph.D.  
Thea Grimm Lewis  
Matthew Anita MacDonald, SSJ, Ph.D.  
Kathleen Newman Marion  
Barbara Wenthe McCarthy  
Margaret Bennett McGreal  
Barbara Benedetti McNichol  
Joan Vercusky Murray  
Michele Mustello  
Sidney Mauchly Nelis  
Mary Magee Onofrietto, Ph.D.  
Mary Reeber  
Anne March Roan  
Joanne Grimm Seaver  
Christine DesRochers Smith  
Patricia O'Connor Smith  
Patricia Walsh Sterner  
Regina Voelker Tauke (M)  
Joan Guiniven Trippetti  
Helen Mikula Vassily

#### CLASS OF 1961 (50%)

##### *Fournier Society*

✧ Miriam Gibbons Mandell (D)

##### *Clement Society*

✧ Mary Isabel Lambert Glenn  
✧ Rosemary Murphy Gulati  
✧ Kathleen McBride Shoup  
✧ Angela Clement Tague

##### *Donors*

Carol Gray Bacica  
Ellen Barrett  
Marita O'Reilly Beckum  
Mary Tanney Bradley  
Elissa Imbriaco Breiling  
Lynne Smith Brown  
Nancy Nuffort Brown  
Katherine Alcamo Cardali  
Maureen Gillen Chan (M)  
Jo Ann Ewadinger Connolly  
Rosemary Tighe Cozzolino  
Anna May Kerns Davidson  
Mary Jo Abrachinsky Doherty  
Barbara Donovan  
Barbara Gallo Draper  
Catherine Brannan Dunn  
Jeanne Labrecque Gagliano  
Joan Gallagher  
Sarah Bean Gentry  
Beatrice Gallagher Grabish  
Rosemary Murphy Gulati  
Sandra Johnson Helverson (M)  
Sheila Overbaugh Hennessy  
Eileen Pollock Holden  
Patricia Doyle Hunt  
Maureen Dearie Husk  
Kathryn Coyne Keegan  
Kathleen McCarthy Kelly

Eugenia Ryan Kennedy  
 Patricia Orna LeVarn (M)  
 Ann Tushim Linck (M)  
 Judith Hadden Lutol  
 Eleanor Archie McCarron  
 Rose Fabio McKenna  
 Helen Baum Miller (M)  
 Barbara Folsom Murch  
 Rosemary Catroppa Palena  
 Margaret Lynch Panas  
 Elizabeth Dyer Ranc  
 Linda McKenna Roxe  
 Susan Enright Ryan  
 Nancy Koonmen Schmidtman  
 Arlene Diziki Scott  
 Patricia Gallagher Smith, Ph.D.  
 Rosemary Amberg Spezzo  
 Kathleen Mahoney Sykes  
 Mary Louise McCurry-Tackas  
 Elaine Bevevino Trevey  
 Mary Alice Butler Warwick  
 Suzanne Pfizenmayer Wiley

#### CLASS OF 1962 (48%)

##### *Clement Society*

Jeanne Collins Donovan  
 Kathleen Gavigan, Esq., Ph.D.  
 ✧ Patricia Tichenor Greer  
 Catherine A Hohmann Lederhaas  
 Sara Young Stoll

##### *Donors*

Catherine L. Albanese, Ph.D.  
 Mary Louise West Ball  
 Clare Cannon Breene  
 Agnes Dougherty Crane  
 Kathleen Braun Dollenberg  
 Barbara Stroud Doyle (M)  
 Joan Fazio Evan  
 Elizabeth Avil Flick  
 Adrienne Donaghue Gallagher  
 Noel Riley Gallagher  
 Margaret O'Donnell Garrett  
 Eileen D'Arcy Garvey  
 Linda Hirsh Glasgow  
 Ellen Brunot Greiner  
 Loretto Nagel Humphreys  
 Jane Gillen Hymas  
 Kathleen Boyle Jarvis  
 Mary Laffan King  
 Kathleen Kugler  
 Felicity Lavelle, Esq.  
 Margaret Libonati, M.D.  
 Barbara McNulty Lowrey  
 Catherine Ondrey Mailloux  
 Denise Love McDaid  
 Margaret Green McLaughlin  
 Diane Gillies Momich  
 Elizabeth Halasz Moore  
 Antoinette Gazzillo Morello  
 Marie McKelvey Oakes (M)  
 Margaret Conlan O'Brien  
 Margaret Martin Purcell  
 Annemarie Fliegel Quigley  
 Alexandra Masiuk Rakowsky  
 Helen McDermott Redding  
 Mary Jane Petriella Ruvo  
 Mary Ellen McGrath Saunders  
 Betty Anne Power Schwarz (M)  
 Roseann Grasmeder Steitz  
 Maureen Schmidt-Thielens

#### CLASS OF 1963 (40%)

##### *Logue Society*

✧ Gertrude Carlin Rutledge

##### *Fournier Society*

✧ Frances McCullen Pierce

##### *Clement Society*

Patricia May Agger (M)  
 ✧ Carolyn Bensel, Ph.D.  
 Marion Williams Berry  
 Diane Driscoll, SSJ  
 ✧ Marcia Gehman, SSJ  
 ✧ Joanne McFadden McBride  
 ✧ Joanne Casacio Regli

##### *Donors*

Mary Louise Malfatto Alexander  
 Mary Ruth Wiegard Becker  
 Natalie Nolan Berkey  
 Judith Scherer Christenson  
 Carol Scudo Delgado  
 Elizabeth Roscoe Dugan  
 Theresa Hehn Eaman  
 Margaret Fick Edmonds  
 Mary Jo Calhoun Egoille  
 Kathleen Finnegan  
 Kathleen Heidere Ford  
 Gertrude Dearie Frekko  
 Lynn Cozza Goodman  
 M. Paula Nyhart Gowen  
 Sheila Duffin Gray  
 Mary Jo Collins Griffin  
 Mary Ann Conway Gursky, Esq.  
 Sandra Cupini Hagenbarth  
 Geraldine Eble Hamilton  
 Rose Anne Di Santo Hannum  
 Kathleen Brown Hyland (M)  
 Isabel Porreca Johnson  
 Alison Turnbull Kelley  
 Mary Grace Grall Killmer  
 Cecile Heebner Knies  
 Zenaida Ancheta Krablin  
 Susan Murray Lybrook  
 Patricia McAdams, Ph.D.  
 Joan Pietras McAuliffe (M)  
 M. Eileen Daly McDonough, Ed.D.  
 Angele Vial McGrady, Ph.D.  
 Mary Aldrich Merman  
 SaraLee Hayden Murphy  
 Nancy Hoffner Orr  
 Jane Wylie Quest  
 Anne De Stefano Salvatore, Ph.D.  
 Carroll Lanman Schleppi  
 Patricia McGee Sharkey  
 Rosalie Papa Shaw, Ed.D.  
 Katherine Roach Sullivan  
 Joan Willey Thirion  
 Elizabeth Tucker Werner  
 Mary Lou Smith Williams  
 Andrea Cherubin Zapczynski

#### CLASS OF 1964 (36%)

##### *Founder's Society*

✧ Anne O'Shea Devlin

##### *Clement Society*

Pamela Ann Black  
 Mary Schuhsler Spangler, Ed.D.  
 ✧ Lois Trench-Hines

##### *Donors*

Mary Alice Kasper Amend  
 Mary Margaret Moore Baker  
 Jacklyn Ryan Bergstresser  
 Joan Blesedell  
 Evelyn Galla Bratton (M)

Linda Marino Bullard  
 Patricia Kocak Corsello  
 Barbara Cruse (M)  
 Geraldine Kaczorowski Dabrowski  
 Terese Wolf DeCamara  
 Lois Love Deibert  
 Margaret Jarosh Doyle  
 Diane Neary Ewing  
 Mary Jane Tynebor Fearn  
 Regina Bennett Fleming  
 Dolores Furlan (M)  
 Mary Goldschmidt Galloway (M)  
 Joyce Finnegan Garrison  
 Florence Loscalzo Giorgini  
 Marianne Carlson Hall (M)  
 Georgene Mann Hartmann  
 Grace McGlynn Herold  
 Mary Holmes  
 Moira Hurley, M.D.  
 Joan Kedziora, M.D.  
 Lois Curti Kittredge  
 Margaret Sewell Krivda (M)  
 Julia Koenig Maher  
 Lorraine Cajano Minecci (M)  
 Dorothy Palatucci (M)  
 Gail Larkin Peach  
 M. Nancy Burczewski Portland  
 Eileen Schulz Prior  
 Amelia Petitti Quaremba, Ph.D. (M)  
 Margaret Jackson Quinn  
 Susan Schatz Reed  
 Mary Ellen Scanlan, Ph.D.  
 Jo-anne Fatibene Semmel  
 Sally Cavanaugh Strike (M)  
 Jacqueline Chrystal Thompson  
 Jerilyn Louis Tierney  
 Erika Huhn Witt  
 Mary Ann Costello Yankosky

#### CLASS OF 1965 (50%)

##### *Clement Society*

Jacinta Lam Chang  
 ✧ Elaine Bennett Davey  
 Marie Sclafani Goldkamp  
 ✧ Isabelle Walsh Gundaker  
 ✧ Regina Maxwell Schwillle (M)

##### *Donors*

Carol Lowe Ambacher (M)  
 Maryanne Reilly Andrews (M)  
 Patricia Chiri Bell  
 Norina Melograna Bonner  
 Susan Clemens Brand  
 Joan Goldschmidt Browne  
 Helen Chaykowsky  
 Christine Quinn Coulston  
 Denise Belcher Crenshaw  
 Maurine Dooley  
 Mary Sullivan Esseff, Ph.D.  
 Frances Schuhsler Hadden  
 Joan Ellen Obrecht Hathaway  
 H. Patricia Hynes, Ph.D.  
 Mollie Brown Ingram  
 Mildred Bell Kaliss  
 Elizabeth Newmiller King  
 Edwina Jaworski Kirkowski  
 Mary Hennessey Krutulis  
 Marybeth Honeyman Leary  
 Pamela Wood Leutwyler  
 Carolyn Vetter Lindstrom  
 Katherine Magee, Esq.  
 Bernadette Bennis Marshall  
 Patricia Jeskey McDermott

Elizabeth Schurr McDermott  
 Martha Wilderrotter McDevitt  
 Bonnie Vasey McDonald  
 Kathleen Martin McFadden  
 Catherine Hebson McVicker, Ph.D.  
 Elaine Palmer Meisinger  
 Elizabeth Wible Molloy, Ph.D.  
 Sheila Murphey, M.D.  
 Florence Zugay Narducci  
 Suzanne Neisser, RSM  
 Evelyn Dunsmore Nosker (M)  
 Susan Brown Penrose  
 Kathleen Green Redrup  
 Mary Frances Flood Rellick  
 Phyllis M. Roche  
 Carol Dewees Schulz  
 Zdanna Krawciw Skalsky  
 Sandra Butler Starkey, Ph.D.  
 Loretta Canalichio Steinmetz  
 Donna Harrington Strok  
 Patricia Ryan Tully  
 Denise Duckworth Tumelty

#### CLASS OF 1966 (35%)

##### *Fournier Society*

✧ E. Michelle Sprague Guerard (M)

Sandra Denenberg Hohberger

✧ Nonie Glennon Murphy

##### *Clement Society*

✧ Martina McCarthy Ball  
 ✧ Kathleen Donahue Bruyere USN, Ret.  
 Carol-Jane Piltz Guardino (M)

✧ Julia Heitzman Koechlin (M)

Jo Ellen Noonan Parsons

✧ Mary Kaufmann Ryan (M)

✧ Mary Lou Sciarillo

✧ Margaret Seidel Walton

##### *Donors*

Regina Mongelli Ammerman  
 Kathleen Rex Anderson, Ed.D.  
 Jane Bentz Atesoglu  
 Hilda Carr  
 Karen Urbani Ciliberti  
 Suzanne Sewell Civitella  
 Elizabeth Burns Cusack  
 Elizabeth Jachimowicz Fanuzzi  
 Mary O'Connor Gentile, Ed.D.  
 Virginia Ott Grant  
 Elizabeth Rowley Jones  
 Margaret Marshall Kramer (M)  
 Jo Anne DiGiacomo Lechowicz  
 Marie Ryan Leonard  
 Mari Preece Lucey  
 Kathryn McFadden MacDonald  
 Nancy McDonald Mason  
 Mary Mulderry Mattson  
 Suzanne Waltrich McGowan  
 Joan Coletti Metallo  
 Mary Delia Tye Neuman, Ph.D.  
 Elaine Miskuff Olson (M)  
 Bernadette Cosenza Prozzillo  
 Lorraine A. Revello  
 Mary J. Salzmann  
 Patricia Brumberger Shields  
 Catherine Sladowski, M.D.  
 Matilda Cavella Souchak  
 Susan Reinhardt Swerling  
 Christine Eidsness Tantisunthorn  
 Lorraine D'Onofrio Vesci

#### CLASS OF 1967 (37%)

##### *Clement Society*

Kathleen Herzog Larkin, Esq.

##### *Donors*

Louise Loia Aaronson  
 Andrea Ortlieb Angelucci  
 Cecilia Bankins  
 Mary Jo Platten Barbi  
 Margaret Madden Bell  
 Mary Pat Gallagher Boyle  
 Joanne Bonavita Budwick  
 Frances Gercke Carey  
 Margaret Kress Carson  
 Patricia Barr Colfer  
 Eileen Menegus Debesis, Ph.D.  
 Tina Rita DeLucia, Esq.  
 M. Kathy Tigh Detrano  
 Catherine Devlin  
 Kathleen Keirle Dougherty, Ph.D. (M)  
 Eugenie Dausey Fleming  
 Helen Kain Galli  
 Suzanne Dames Gibbs  
 Sandra Kuback Grill  
 Margaret Brabazon Henry  
 Patricia Olwell Hoglund  
 Angela Galla Huntley  
 Florence Lyons Hurley  
 Barbara Jani  
 Nancy Culligan Jennings  
 Joan McFadden Jernee  
 Margaret Coffey Kelleher, Ph.D.  
 Katherine Ferguson Knox  
 Dorothy Kushlis Macfarlane, M.D.  
 Dorothea Klebacher Magyar (M)  
 Kathleen Malaney, M.D.  
 Eileen McIlhinney  
 Marian Fanning McNamara, M.D.  
 Margaret C. Moran  
 Mary Jane Briggs Morgan  
 Maureen Hennessey Murdock  
 Jean Brennan Pivetz  
 Mary Quinn  
 Mary Louise Goldkamp Ryan  
 Kathleen Campbell Schugsta (M)  
 Carlotta Andruzza Seeley  
 Pilar Pinili-Silva, Esq.  
 Elizabeth McGarvey Smith  
 Margaret DiSanto Storti  
 Marilea Swenson  
 Barbara Ann Lopresti Weber  
 Kathleen Weibel  
 M. Catherine Dobbs-Wendleton  
 Antoinette Whitmore

#### CLASS OF 1968 (30%)

##### *Clement Society*

Kathleen Clauss Borkowski (M)

##### *Donors*

Rosalie Marinari Akouka, M.D.  
 Karen Reinhardt Avenick  
 Denise Reilly Blasdale  
 Lynda Sokolski Branstrom  
 Theresa Elmendorf Carroll  
 Patricia Knapp Chopiga  
 Mary Beth McKeon Dacey  
 Faith Peoples Dillon  
 Molly Walsh Donovan, Ph.D.  
 Maureen Colleran Doyle  
 Joyce Maurin Fonash, Ph.D.  
 Marlyn Tome Formidoni (M)  
 Marguerite Stern Gallagher  
 Jane Foulkrod Galvin

Maryann Campbell Gans  
 Judith VanStone Golderer  
 Kathleen Corcoran Griffith-Keene  
 Patricia Egan Hardy  
 Barbara Jo Aherne Hartzell  
 Patricia Quinn Hayden (M)  
 Joan Edmund Husted  
 Rosa Teresa DiFrancesco Lee  
 Joan Lunney, Ph.D.  
 Margaret McKee Madison  
 Barbara Tiffit Maier  
 Rosemary Marino Mangano  
 Constance Brown Masciangelo (M)  
 Maryanna Kane Massey  
 Paula Ippolito McCarthy  
 Ellen Miller (M)  
 Miriam Berry Moore  
 Mary Kay Briggman Mullen  
 Patricia Parrella Orlando  
 Patricia Cole Scott  
 Rosemarie Litterio Shannon  
 Teresa Clark Trudeau  
 Nina Buckley Yeager

#### CLASS OF 1969 (17%)

##### *Fontbonne Society*

✧ Judith Campbell (M) (D)

##### *Clement Society*

✧ Katherine Marschall, M.D.

##### *Donors*

Roberta Romano Acchione (M)  
 Eileen Husted Anderson  
 Carol Dragonetti Avicoll  
 Frances Cleary Barnett (M)  
 Jana DeFrancesco Belansen  
 Diana Pitman Brooks  
 Joan Fry Donahue  
 Regina Mellor Dudley  
 Nancy Himmer Esposito (M)  
 Suzanne Edwards Gaffney  
 Kathy Fowler Goodyear  
 Susan Rapp Halczenko (M)  
 Anna Gibino Kerr  
 Margaret Kirby Lucia  
 Kathleen McNicholas, M.D.  
 Gertrude Betz Mihalcik (M)  
 Kathleen Furlong-Norman  
 Joan Pollitt (M)  
 Evelyn Guarnieri Powers  
 Katherine Safford Ramus  
 Janet Tedesco

#### CLASS OF 1970 (25%)

##### *Fournier Society*

✧ Janet Brown Quintal (M)

##### *Clement Society*

✧ Mary Gallagher

✧ A. Clarice Zaydon, M.D.

##### *Donors*

Vinette Brown Achtert  
 Marilyn Sutton Adomanis  
 Felicia Corsaro Barbieri, Ph.D.  
 Kathleen Vath Campbell (M)  
 Patricia Canning  
 Arlene Amoruso Del Pizzo  
 Lydia Maiorca Driscoll (M)  
 Barbara Walker Erhard  
 Claudia MacFadden Fletcher  
 Linda Heintzelman Gesell  
 Teresa Hagan  
 Mary Ann Haggerty, M.D.  
 Mary Margaret Hamill

Maria Pugliese-Hieble, M.D. (M)  
Betsy Flynn Hollo  
Christina O'Neill Keogh  
Joan Loreng  
Diane Hugues McGinty  
Patricia Cholewinski Nicholson  
Nadine Morse Noble  
Judith Anne Paul (M)  
Judith Perkins  
Patricia Johnson Skopal  
Diane Stanczak (M)  
Elizabeth Shafer Tetenbaum  
Rita Callan Whitaker  
Katherine Barrett White

**CLASS OF 1971 (30%)**  
*Clement Society*

✧ Lorraine Aurely (A)  
Margaret Betz, Ph.D.  
✧ Clare Hamilton Bohnett  
Elizabeth Marron Cooper  
✧ Suzanne Schulz Dressler  
✧ Susan M. Pisano

*Donors*  
C. Jane Caldwell Adams  
Patricia Di Francesco Bender  
Elizabeth Moleski Colonna  
Monica Cetrullo Costlow  
Regina Ventresca Creedon  
Mary Anne Mokriski Girard  
Judith Flynn Haskell  
Blanche Goffredo Haughton  
Frederica Massiah-Jackson, Esq.  
Elizabeth Lamb Lillie  
Clare Ammend Magee  
Marilyn McCarthy Marschel  
Patricia Giglio Mason  
Jennifer Niles McCann  
Rita McCloskey Miziorok  
Nancy Arauz Monnat  
Carol Sheerin Murphy  
Catherine Myers  
Geraldine Nuzzo  
Kathleen Dixon O'Brien  
Joan Kochenash Rogers  
Roberta Rothwell Schillo  
Joy Supil Siegel  
Ann Marie Smith Sielski  
Kathleen Sinkinson  
Frances Skiendzielewski  
Rosemary McGroarty Sullivan, Esq.  
Mary Louise Brown Sutherland  
Mary McKenna Thorne  
Gladys Porrata Torres  
Kathleen Wall  
Carolann Buchy Wesley  
Mary Kelly Whalen

**CLASS OF 1972 (21%)**  
*Clement Society*

Caroline Devine (M)  
*Donors*  
Christine Scott Beck  
Patricia Caldwell  
Maureen Dixon Cass  
Pauline Chung  
Anna Faris DiFranco (M)  
Andrea Varricchio-DiVito, Ph.D.  
Margaret Durkin, Esq.  
Mary Lynne McCarthy Ekdahl  
Corinne Foley Errico (M)  
Kathryn O'Neill Fisher

Eleanor MacMahon Frank  
Frances Bonanni Hay  
Kathleen Mooney Hennessey  
Ellen Loughran, Ph.D.  
Elizabeth Lunney (M)  
Joanna Rizzo Mastronardo  
Patricia McNichol  
Stephanie Olexa, Ph.D.  
Susan Kohlbecker Pirollo  
Margery King Roby  
JoAnne Sidoti Schmidt, D.D.S  
Linda Williams Spillane  
Margaret Hetzer Stuart  
Mary Kaszuba Toth  
Donna Gers Turk  
Andrea Wargo, Ph.D.  
Kathleen Carlin Weiss

**CLASS OF 1973 (24%)**  
*Clement Society*

✧ Frances McCormick Murphy  
✧ M. Gervase Rosenberger, Esq.  
*Donors*  
Rosemarie Fitzpatrick Architzel  
Anne Brennan  
Mary Ann Tancredi Brugnolo  
Joy Dickerson-Carey  
Frances Ciurcina (M)  
Mary Little Collins (M)  
Glenda Battistini Daulerio  
Mary Ellen Brady Eck  
Denise Yanushka Gibson  
Mary Tyler Muldoon Holmes  
Maureen Ryan Holwin  
Carmencita Chafey Jimenez  
Ann Kohoot  
Joan Courtney Leicht  
Barbara Mercer Panek  
Elizabeth Green Perkins  
Phyllis Mawer Smith  
Deborah Breidinger Vicario  
Maria Colella Wiemken

**CLASS OF 1974 (27%)**  
*Clement Society*

✧ Mary Catherine Fitzsimmons  
✧ Mary O'Gorman Murray  
✧ Patricia Harper Petrozza, M.D.  
*Donors*  
Christine Binkowski Andrews  
Marsha Humphries Boex  
Paula DeSanctis Bonavitacola  
Patricia Buckley, Esq.  
Carlota Garcia Colberg  
Patricia Collins Crognale, D.D.S  
Janet Powers Dunne  
Barbara Barth Faherty  
Marybeth Egan Fedyna  
Joanne Fidler  
Christine FitzPatrick (M)  
Margaret Mascioli Giuntini  
Valerie Mikula Hughes, D.D.S  
Elizabeth Mallon Hunter (M)  
Anita Chiu Kan (M)  
Mary Sher Kenney  
Mary Lenore Gricoski Keszler, M.D.  
Joan Cook Krov  
Rosemary Leone  
Susan Lyons  
Christine Bersheim Morawski (M)  
Mary Kinahan-Ockay  
Patricia Kenney Quinn

Rosemarie Tort-Schroeter  
Eden Eisler Sullivan  
Leona Valentine  
Elizabeth Sauter Weber  
Virginia Bendinger Wischhusen  
Anne Guardino Yaccarino

**CLASS OF 1975 (31%)**  
*Clement Society*

✧ Susan Prince  
✧ Carol Voelmlm Zemnick  
*Donors*  
Mary Ackroyd  
Linda Avila  
M. Susan Dougherty Burke, M.D.  
Catherine Tucker Carman  
Catherine Cardamone Duarte  
Janine Delaveau Dwyer  
Judith Burger Dysart (M)  
Wanda Feletski  
Barbara Bridi Frampus  
Susan Berko Glass  
Jane Tomalonis Gursky  
Barbara Hee  
Rita Baker Kaplan  
Lorena Landucci  
Mary Simmons Limbach  
Jane Dunne Mack  
Denise Roney McGonigal  
Nancie Ann Kenny Moebius (M)  
Virginia Flynn Morris  
Ngozi Onyewuenyi Oleru, Ph.D.  
Maureen Moffatt Parassio  
Karen Rogers  
Lynne Huddleston-Ruff (M)  
Janice Maffei Shapiro (M)  
Cynthia Strolle (M)  
Regina Williams Tate, Esq. (M)  
Patricia Kane-Vanni, Esq.  
Mary Capece Weinstein  
Angela-Jo Castranova Wetzal

**CLASS OF 1976 (28%)**  
*Clement Society*

✧ Mary E. Brandt, Ph.D.  
✧ Joanne Fink  
✧ Anne E. Tezak  
*Donors*  
Sharon Cameron Baldwin  
Mimi Strolle Bender  
Joann Bauer-Blake  
Elizabeth Brown (M)  
Diane Scicchitano Dannenfesler  
Margaret Burns DiGiacomo  
Marianne Valvardi Dwyer  
Rosemary Galbally Endres  
Mary Ann Velten Gilman  
Anne Marie O'Donnell Housel  
Katherine Crosson Hylinski  
Mercedes Diaz Lopez  
Mary Ellen O'Laughlin, Esq.  
Mary Degnan Phelps  
Theresa Van Koski Richardson  
P. Cronin Buck Sleeper  
Regina Black Urmson  
Anita Haskins Wise (M)  
Suzanne Santopolo Wood

**CLASS OF 1977 (22%)**  
*Logue Society*

✧ Margaret Carney McCaffery  
*Clement Society*  
Susan Kanehann Ahmad, M.D.

✧ Alice Ann Gricoski Dachowski, M.D.  
*Donors*  
Maria Valenzisi Cahill  
Cecily Craig  
Patti Grossman Deutsch  
Joanne Thomer Facci (M)  
Teresa Barth Gervasio  
M. Chris Hemsley  
Karen Quinn Kopelke  
Dorothy Bolash Lista  
Mary Lounsberry Miller  
Cecelia Englebert Passanza  
Joan Dougherty Pierson  
Mariann Pokalo, Ph.D.  
Barbara Rensman  
Nancy Murphy Shea  
Margaret Callaghan Steficek  
Irene Ampthor Tori  
Heyda Baez Toth  
Ina Negron Zorrilla, D.M.D.

**CLASS OF 1978 (17%)**  
*Donors*

Mary Conway Arnone  
Alison Franks Babiarz  
Mary Frances Corazza Balch  
Maria De Luca  
Rita Gallo  
Margaret Rentzsch Harshaw  
Louise Kuklinski, M.D.  
Cecilia Mohl McAleer  
Marisa Axtmayer McAuliffe  
Mary Prendergast Murray  
Nancy McCarthy Pashley  
Helene Regetta  
Carmen Guzman Riter  
Mary Denise Wade Schon, Esq.  
Cecilia Cordua Stanton  
Denise Vernon Toland  
Bonnie Word, M.D. (M)

**CLASS OF 1979 (18%)**  
*Clement Society*

Devorah Rosenberger Eckhart  
Stephanie King, M.D.  
*Donors*  
Mary Augustine  
Barbara McCormack Buonora  
Eileen Burke Coffey  
Diane Heverline DeWitt  
Christina Dougherty, V.M.D.  
Margaret Feraco Frampton  
Eileen, RAuscher Gray  
Amy Doyle Koch  
Theresa Boyle-Miller  
Valerie Kull Munter (M)  
Patricia McLaughlin Navitsky  
Claudia Robertone  
Patrice Maguire Scott, Esq.  
Stephanie Smith  
Christina Demetrovits Woody

**CLASS OF 1980 (23%)**  
*Clement Society*

Kathleen Peditto, M.D.  
*Donors*  
Jayne Higgins Avery  
Mary Boyle  
Lynne Silverio Carpenter (M)  
Marianne De Rosa De Alessi  
Adrienne Donatelli  
Jeanne Kemp Fleischer  
Mary Louise McDonald Galvin

Patricia Waldron Gray  
Angela Maher Harris  
Patrice Owens Hartung  
Cheryl-Ann Montano Hughes  
Pamela Grimme Johnson  
Margarita Mongil-Kwoka  
Judith Mokriski Lannutti (M)  
Suzanne Valvardi Lasek  
Barbara Hynes MacIntosh  
Lee Ann Dwyer Mahla  
Susan Montgomery  
Kathleen Gardner Pearson  
Janice Schuler Prentice  
Susan Liebel Roberts  
Noreen Ryan Strohmenger  
Joann Bowes Taylor  
Julia Kittner Wakelee  
Barbara Boyd Ward (M)  
Marcianne Waters  
Nancy Meiklejohn Wolgamot

**CLASS OF 1981 (18%)**  
*Donors*

Jeanne Baffa, M.D.  
Elaine Patelunas Copeland  
Samuella Lazzara Donnelly  
Kathleen McGinley Fallon  
Diane Dudziec Glasser (M)  
Donna Sedock Hess  
Debra Zeigler Horan  
Mirela Manea-Krichten, Ph.D.  
Mary Anne Tomaselli Matthews  
Catena Messina Naydan  
Christine Schluckebier Quinn, D.P.M.  
Linda Rafter  
Mary Elizabeth Dwyer Ranieri  
Virginia Hylton Scott  
Tracey Dever Simpson  
Genevieve Dagney Sparano  
Judy Maceyko Sweriduk  
Susan Doyle Tumulty  
Colleen Corcoran Vogel (M)

**CLASS OF 1982 (22%)**  
*Donors*

Annemarie Stauch Boehnlein  
Maria Pascale-Boni  
Loretto Kunesh Canfield (M)  
Amy Molloy Cordasco  
Maureen Keashon Dwyer  
Catharine Farnan  
Carol Clark Fucigna, M.D.  
Ellen Seiberlich Hardy  
Siobhan McEnaney-Hayes  
Catherine Spollen Holt (M)  
Valerie Greco-Hunt, M.D.  
Lynnane Kasarda, M.D.  
Mary Beth Tobin Macaluso  
Lisa Rounds Miles  
Maryellen Britt Miller  
Patricia McIntyre O'Connell  
Suzanne Olivieri O'Donnell, M.D.  
Louise-Anne Pulli, D.C.  
Kathleen Sokolowski Sexton  
Theresa Smith  
Carol Steinour, Esq.  
Beverley Patrone Uniacke, M.D.  
Joyce Adams-Wert

**CLASS OF 1983 (15%)**  
*Donors*

Barbara Dolan Arena  
Susan Wentland Brobst, Ph.D.

Kathleen Clarke  
Gina DiGiuseppe  
Debra-Lynn Wolaniuk  
Dombrowski, O.D.  
Regina McDonald Gebka  
Adrienne Hallums  
Marion Clinger Hanuschek  
Grace Voigt Kozrad (M)  
Patricia Schrader McDonnell, Ph.D. (M)  
Genevieve Miller  
Yvonne Coglianese Scholl  
C. Christa McGlynn Wetzal  
Maureen Jaster Whitham  
Alice Mary Connolly Zenner

**CLASS OF 1984 (16%)**  
*Clement Society*

Stephanie O'Connell Siegrist, M.D.  
*Donors*  
Margaret Hughes Crofton  
Gillian Horna Dezzutto  
Mary Agnew Dunleavy  
Vanessa Horta Gloates  
Joanne Houlahan, Ph.D.  
Ann Lipinski Kolb  
Phyllis Hartman Kravinsky  
Lisa Porter Kuh  
Mary Beth Higgins LiVolsi (M)  
Carrie Wosicki Loveless  
Patricia Klammer Mac Cluen  
Kathleen O'Boyle  
Alison Porter  
Renee Raymond Portu  
Lisa DeMarco Pozzolo  
Lynda Fennessy Reese  
Catherine Yavarone Sewnig  
Beatrice Gosik-Smith

**CLASS OF 1985 (10%)**  
*Donors*

Catherine Ard (M)  
Theresa Bagdon-Artis  
Laura Malisheski Connelly (M)  
Dorothy Murray Foley  
Karen Reddington-Hughes  
Joann Gallagher Jones, Esq.  
Jill Kelton Minor  
Angela Vance (M)  
Angela Jones Willie  
Valerie Winn

**CLASS OF 1986 (20%)**  
*Donors*

Jane Kollhoff Bisbing  
Karen Prihoda Brown  
Ann McGee Carbon, Esq.  
Tara Columb  
Anne Bradley De Masi  
Jane McHale Diorio  
Cathleen Eager Feeney  
Lisa Anne Roney Haas  
Mary Clark Haon  
Maryann Hartzell, D.P.M.  
Annemarie Wernoch Hauschild  
Joanne Milburn Hollenbach  
Maureen McFadden Holley, D.M.D.  
Donna Talluto Mihelick, M.D.  
Martha Ranc, Ph.D.  
Christina Cariola Schemm  
Maryann Albertoli Walker  
Lisa Brennan Young (M)



## CLASS OF 1987 (15%)

### Fontbonne Society

✧ Marianne McGurk Wallaesa (D)

### Donors

Maureen Cleary Argentieri, Esq.  
Lisanne Mikula-Hay, Esq.  
H. Ashley Smith-Holton  
Maureen McGlynn Koerwer  
Michele Moser Mutch  
Mary Ann Stahl Patton  
Kathleen Shea Pié  
Beth Griech-Polelle, Ph.D.  
Catherine Tucci Roberts  
Sandra Weychert Rollins  
Kathleen Prihoda Schwartz (M)  
Lynn Mulvaney Sharp  
Denise Walsh

## CLASS OF 1988 (10%)

### Donors

Elizabeth Albertoli Becker (M)  
Kathleen Quigley Grimm  
Lisa Long Martelli  
Maureen Kelsey O'Hara  
Fiorina Pellegrino  
Mary Jane Reilly  
Beth Davey Rosso (M)  
Charlene Zebrowski

## CLASS OF 1989 (21%)

### Donors

Caroline Reilly Dignan, M.D.  
Teresa Moser Gioia  
Letitia Pukas McNeil  
Mary Remington Meakim  
Karen Mudry  
Abbie Pendleton  
Marjorie Scott  
Mary Sylvester Thompson  
Carole Trone, Ph.D.  
Crystal Bush Tucker  
Audra Meckler Wallis  
Susan Monaghan Williams  
Catherine Senger Zarrelli

## CLASS OF 1990 (14%)

### Donors

Michele L. Ferrara Cutler  
Elizabeth A. Rice Dasher  
Brenda M. Gala DeStefano  
Dorothy Smith DiMassimo  
Debora Floyd  
Kristin Durski Gartner  
Susan M. Rilling Haitisch  
Lynn Marie Boccella Kulak  
Maria M. McMichael  
Kimberly Giordano Myler  
Jennifer A. Eager Scalaro  
Michelle Quinn Smith (M)

## CLASS OF 1991 (10%)

### Donors

Joanne Brown  
Jessica Flattery Cole (M)  
Rosemary Haenn  
Catherine A. Lavelle Kessmeier, Esq.  
Gretchen Ann Reilly  
Beth Ann Jarrell Romberger  
Jocelyn Orallo Valencia

## CLASS OF 1992 (9%)

### Clement Society

✧ Catherine Lockyer (D)

### Donors

Blanca Gonzalez Canney  
Maria Santoro Conway  
Nancy Burton DellaVecchia  
Megan Hardiman James  
Joelle Zveitel Lesniak  
Rebecca Warner Von Nieda

## CLASS OF 1993 (10%)

### Donors

Stacey Black  
Susan Pagliaro Clark  
Lise Cassarella Leonard  
Amanda Adasavage Nowicki  
Valerie Caraballo-Perez  
Darla Baum Tomlinson  
Dianne Vagnini  
Theresa Falco Wydan

## CLASS OF 1994 (5%)

### Donors

Amy McLeer Frangione (M)  
Kerry Freisen Lively  
Bridget Hill Panza  
Pamela Fiugalski-Prevoznik  
Jodie King-Smith (S)

## CLASS OF 1995 (7%)

### Donors

Andrea Capozzi Brecker  
Dianne McCullough Christopher  
Joanne Martinez  
Nicole Ohler Roman  
Yumiko Wakabayashi  
Julia Scott-Wright

## CLASS OF 1996 (7%)

### Donors

Tamara Friend  
Kristin Heiser  
Delony Logan Langer  
Karin Stangler Murphy  
Thanh-Thao Nguyen (M)  
Jennifer McNulty Styles

## CLASS OF 1997 (11%)

### Donors

Sarah Colton  
Cindy Marx Davidson  
Alicia Pallas Elsetinow, Ph.D.  
Josephine Hagan  
Debra Washington Hathorn  
Michelle Leshko Kaschak  
Ann Keer  
Jennifer Kelly  
Diana Barnett Kudes, M.D.  
Erin Whelan McCann  
Dana Walker

## CLASS OF 1998 (6%)

### Donors

Rieke Baize  
Jessica Bowman Dodson  
Megan Gallagher  
Catherine Savage

## CLASS OF 1999 (5%)

### Donors

Molly McMenamin Brookerson  
Megan Shull  
Monica Voglewede

## CLASS OF 2000 (12%)

### Donors

Katie Berryman  
Jacqueline Gura Ciaverelli  
Christine Hepp  
Jhoselyn Martinez  
Amy McClarnon  
Kathleen McGinley  
Bridget McGovern  
Barbara Sliker Weikert

## CLASS OF 2001 (12%)

### Donors

Tasha Blakeney  
Jessie Cheng  
Mary Rose Faustman  
Jennifer Lott  
Christine McCrane  
Patricia McGovern  
Laura Paul  
Annie Sampson  
Felicia Tomassi

## CLASS OF 2002 (3%)

### Donors

Jennifer Turecki Martin  
Lisa Rivera

## CLASS OF 2003 (4%)

### Donors

Coleen Bant  
Anna O'Conor Hinson  
Mayra Castillo Rangel

## CLASS OF 2004 (10%)

### Donors

Jamie Dunn  
Stephanie Rendine  
Karen Speers  
Maureen Stolzer  
Felicia Trujillo  
Monica Vesci

## SCHOOL OF CONTINUING STUDIES

### Clement Society

✧ Maureen Rykowski McCarthy '02

✧ Loretta McLaughlin '74

✧ Mary Elizabeth Ounsworth '92

### Donors

Dannah Addalli '00  
Marcia Allen '03  
Jatynus Nichols Alston '98  
Rachael Smyth Anderson '02  
Cynthia Angelo '02  
Amelia Askew '93  
Gary Barnett '77 (M)  
Kenneth Bartlett, Sr. '99 (M)  
Emily Bassler '93  
Melvin Benson, III '03  
Carol Fetterman Blauth '78  
Robert Bonham '02  
Vanessa Boyd '03  
Jean Brown '94  
Rosemary Griffin Carolan '72  
Eiko Carr '94  
Roberta Carrier '83  
Katharine Hutelmyer Carrigan '89  
Ruth Carver '88  
Theresa Brady Chanko '78  
Frances D. Chicchi '90  
Judith Clark '87  
Elizabeth Colligan '03  
Anne Coneghen '94  
Joan Murray Conmy '91 (M)  
Glynnis Robins Cradwell '89  
Deborah Larue Cross '03  
Ann Marie McAleer Cullen '94  
Barbara Ambrose Curtis '94  
Judith F. Foster Cute '90  
Melissa D'Amelio '97  
Geraldine Dever '85  
Deborah Matis Donnelly '96  
Kathleen Dougherty '87  
Christina Drucker '03  
Dean Ennis '02  
Lisa Feeley '00  
Lizbeth Feldstein '02  
Dineen Foley Filoramo '00  
Donna Fiugalski '01  
Donna Bongarzone-Fluehr '03  
Saori Fujiyama '95  
Sally Gallagher '78  
Bernice Fuller Garrison '02  
Gilda Caruso Gregori '01  
William Gross '03  
Denise Haffner '79  
Josephine Hagan '97 (M)  
Lorna Hawkins-Bell Harmon '01  
LeKisha Harvey '00  
Danelle Hawkins '03  
Anne Hipp '96  
Esther Ford Houston '87  
Elizabeth Cornell Huston '85  
Michael Janisheck '01  
Marcia Moore Jones '92  
Joseph King '79  
Carol Searle Kirk '81  
Karen Korman '91  
Patricia Jones Kosek '93 (M)  
Patricia Rowe Laurenzi '89  
Lorraine Lawler '97  
Anita Lawler '91  
Frances Lutz '98  
Mary Moran Mahal '87  
Joan Maier '83  
Nancy L. Markle '91  
Christina Seving McDonald '03  
Janice Edwards McGowan '86  
Brian McKenna '03  
Sheila McQuillan '85  
Janet Messner '78  
Margaret Mitchell '03  
Carolyn Sagendorph Montgomery '97  
Mary Louise Montuoro '77  
Jennifer Dixon Morgan '04  
Esther Murray '94  
Ann Nedbal '85  
Patricia Organsky '00 (M)  
Gwendolyn Osborne '01  
Robert Otto '03  
Kathryn Palermo '96  
Natalie Moyer Peracchia '04  
Crystal Plummer '04  
Christine Westrum Porter '94  
Catherine Quinn '78  
Mary Jane Reilly '94  
Cynthia Ricker '89  
Avril Roberts '03  
John Rooney '04  
Jane Schoeniger '00  
Veronica Sessa '93  
Sherry Shaeffer '00  
Elizabeth Shober '96  
Edna Shriver '04  
Catherine Simon '85

Maryanne Simurda '71  
Karen O'Neill Spencer '85  
Kathleen M. Spigelmyer '98 (S)  
Susan Stasiowski '90 (M)  
Jean Stotter '73  
Kathleen Devlin Stull '96  
E. Kathleen Sweeney '94 (M)  
Donna Sykes '02  
Gina Torres '02  
Susan Matlack Troemel '87  
Jo Marie Victor '04  
Theresa Brown Wade '93  
Lori White '03  
Shernise Blackwell Whiting '95  
Joan Underwood Whiting '92  
Gertrude Williams '98  
Kinga Raski Zambo '01

## SCHOOL OF GRADUATE STUDIES

### The Clement Society

✧ Valerie DeFelice Downing '95

✧ Catherine Griffiths Harrison '98

### Donors

Penny Mellis Aldrich '99  
Elise Miller Balcom, Esq. '86  
Judith Becker '98  
Johanna Bender '04  
Joseph Bowers '02  
Christina Boyer '91  
Debra Brown '03  
Maureen Clemens Brown '97  
Catherine Buffington '91  
Sandra Bumgardner, Psy.D. '89  
Janet Mora Caputo '00  
Christine Fammeler Cardino '00  
Constance Carey '83  
Denise J. Monaghan Carles (M) '90  
Kathy Cheston Caruso '91  
Dorothy Millar Cirillo '86  
Stephanie Rulon Clymer '92  
Margaret Colton '86  
Jill Starr Cott '93  
Eileen Coutts '92  
Colette Coyne '91  
Nancy LaSpada Dachille '01 (S)  
Geraldine Stock DiLisi '92  
Patricia Gangl Dolan '94  
Maureen Drumm '91  
Bernice Duff '83  
Adrienne Dickerson Ehle '01  
Michele DiPasquale Elkes '02  
Carole Esterlitz '87  
Mary Ann Figura '90  
Susan Paine Fisher '93  
George Fleming '95  
Lois Glasgow Force '89  
Wandrea Freeman '02  
Diane D'Arcy George '04  
Eric D. Glass '91  
Scott Goldoor '93  
Nancy Tyndall Goth '03  
Kristine Gross '04  
Jeanne Cavaliere-Grover '04 (S)  
Cora Holland Haffner '00  
Claire Hawkins '93  
Mila Hayes '04  
Belinda Horn Heidenreich '00  
Patricia Herbst '94  
Gloria Hodgert '91 (S)  
Nan Sellers Hood '02  
Charles Horner, III '95  
Elisabeth Steuble-Johnson '98  
Ann Regina Joyce '03  
Melissa Joyce '02  
Cynthia Killion '90  
Joy Stretton Kohne '94  
David Laver '99  
Rhonda Jones Levy, Esq. '97  
Pamela Ballwig Livingston '04  
Marianne Loney '95  
Francine Umerich Lukacik '04  
Valerie Hoppes Madea '03  
Christine Wicks Madison '87  
Lauren Topps Malora '87  
Regina Keeris McCrea '89  
James McGee '94  
Carolyn McGill '00  
Donna Rimmer McManus '04  
Mary Charles McNally '85  
Janice Michaels '98  
Elizabeth Monaghan '02  
Sandra K. Moore '90  
John Musewicz '04  
Kathleen Griffin Muth '01  
Margaret Jones Newman '95  
Christine Nydick '94 (S)  
Margaret Behre O'Neill '95  
Lisa Blackwell-Opher '04  
Patricia Veneziale Orlic '87  
Shirley Ormes '01  
Lisa Putsch Peuser '93  
Linda Pfefferle '87  
Joyce Schnaubelt Platz '95  
Brian Powell '02  
Kathleen Pasco Proud '94  
Francis Reynolds '94  
Kimberly Phillips Rojas '96  
Catherine Murtha Rudolph '01  
Barbara Costello Saxer '94  
Jeanne Schwarzer '04  
Maryellen Doyle Small '91  
Debesai Solomon '04 (S)  
Karen Hernandez Starner '98  
Mary Anne Crawford Staudenmeier '01  
Fred Straus '91  
Heather Taws '95  
Katherine Timoney '88  
Virginia Toliver '94  
Kathleen Hogan Tomon '02  
Michael Varlaro '03  
Marilyn Gumaer Vencius '95  
Suzanne Venezia '03  
Claire Keppley Wanamaker '94  
Katherine Fonville Watson '94  
Betty Kroupa Wells '95  
JoEllen Werthman '95  
Aubrey Dick White '04  
Deborah Chan Williams '91  
Janice Young '92  
Donna Harp Ziegenfuss '02

## PARENTS & FRIENDS

### Founders Society

Mr. & Mrs. John R.Cochran, III

### Logue Society

Anonymous

Anonymous

Estate of Harold Burns, M.D.

Mr. & Mrs. Francis J. Dunleavy

### Fontbonne Society

✧ Elizabeth M. Bowden, LL.D.

Mr. & Mrs. Robert Teufel

John Walker

Harry Wallaesa

### *Fournier Society*

James Lesser  
✧ Mr. & Mrs. Robert Lockyer  
Ms. Patricia Lyons  
Francis X. Murphy

### *Clement Society*

✧ Miss Emma Lou Benignus \*  
✧ Mr. & Mrs. John P. Borneman  
Country Day School of the Sacred Heart  
Ms. Pam Cyr  
✧ Frank Davey (D)  
✧ Mrs. Deborah Davies  
Joseph P. Denny (D)  
✧ Mr. & Mrs. John Doody  
✧ Mr. & Mrs. Stephen Gardner (D)  
Mr. & Mrs. Laurence Genuardi  
✧ Mr. & Mrs. Robert Glackin (M)  
Nan Hechenberger, Ph.D. (D)  
✧ Mrs. Quita W. Horan  
Mr. & Mrs. Thomas Lynch  
Anthony Maglio, Jr.  
Mrs. Cornelia McGill  
Ms. Katherine Mezzanotte & James Bielumas (S)

✧ Mr. & Mrs. Shaun O'Malley  
✧ Mr. & Mrs. William Page  
Ms. Edith Palermo Estate  
✧ Mr. & Mrs. Bernard Rafferty  
Religious of the Assumption  
Miss Joanna Renzi  
✧ Mrs. Mary Ann Restall  
✧ Mrs. Barbara Spiro Ryan (D)  
✧ Ms. Mary T. (Molly) Sabia  
✧ Mr. & Mrs. John Sabia, Jr. (D)  
✧ Ms. Nadya K. Shmavonian (D)  
& David E. Loder  
Ignatius Wang (D)  
✧ Mr. & Mrs. Richard Wrona  
Ronald Zemnick (D)

### *Donors*

Mr. & Mrs. William Adams  
Mr. & Mrs. James Arthurs  
Ms. Elaine Baer  
Mrs. Rita Boland  
Mrs. Columбина Bonanni  
Charles Boris (M)  
Capt. & Mrs. Aubrey Bourgeois  
Mr. & Mrs. Earnest Boyd  
Mr. & Mrs. William T. Brennan  
Ms. Betty Buckley  
Mr. & Mrs. Richard Burke  
Ms. Stephanie Byrd  
Mr. & Mrs. John Capozzi  
Mr. & Mrs. John Carnevali  
Mr. & Mrs. William Castone  
Mr. & Mrs. James Cavaliere  
Mary Anne Celenza, Ph.D.  
Mr. & Mrs. Alberto Ciabussi  
Mr. & Mrs. James Coll  
Ms. Dawn Colligon  
Mr. & Mrs. John Collins  
Dominic Cotugno, Ed.D. (F)  
Mr. & Mrs. Ronald Cunningham  
Mr. & Mrs. Robert Curry  
Mr. & Mrs. Guido DeFlaviis  
Mrs. Ivette DeLong  
Mr. & Mrs. Don DeSantis  
Mario Dianora  
Mr. & Mrs. Nicholas DiMuro  
Mr. & Mrs. Richard Dinan

Ms. Mary Anne Doherty  
H. Gerard Donohie  
Walter Donovan, Jr.  
Ms. Elizabeth Duffy (M)  
Mr. & Mrs. Daniel Dugan  
Robert Durney (F)  
Benjamin Evans  
Joel Flachs  
Mr. & Mrs. George Forde, Jr.  
Mr. & Mrs. James Forsythe  
James Gallagher  
Mrs. Irene Grady  
Mrs. Diane Graeber  
Ms. Mary Gribbin  
Mr. & Mrs. Daniel P. Griesbach  
Mr. & Mrs. Darrell Hammons  
Mr. & Mrs. John Hardiman  
Ms. Martha Harris  
Raymond Hartman, Jr.  
George Hartnett, Esq.  
Donald Heron  
Mr. & Mrs. Isaac Hickerson  
Mr. & Mrs. James Hodson  
Augusta Hogan  
Ms. Debbie Hogle  
Alfred Holm (M)  
Ms. Jane Hughes  
Mr. & Mrs. Thomas Hutchinson  
Dr. & Mrs. Jesus Janchez  
Mr. & Mrs. Martin Johnson  
Mrs. Agnes Kelly  
Paul Kelly, III  
Mr. & Mrs. John Kozin  
Mr. & Mrs. Leroy Kurtz  
Mr. & Mrs. Frank Lacontora (M)  
Mr. & Mrs. Jerry Lamote  
Mr. & Mrs. Joseph Lennon  
Mr. & Mrs. Wayne Leshar  
Ms. Marion Logue  
John Luciano  
Dr. & Mrs. Hubert MacDonald  
Ms. Anita MacDonald  
Gregory Magarity, Esq.  
Mr. & Mrs. Alan Maher  
Mr. & Mrs. Carl Malisheski  
Kristin Marcussen, D.C.  
Mrs. Cecilia Marino  
Mr. & Mrs. John Matthews, Jr.  
Mr. & Mrs. William McCafferty  
Warrington McCullough, III  
Ms. Nancy McDonald  
Mr. & Mrs. Francis McIntyre, Jr.  
Charles McKee, Esq.  
Mr. & Mrs. James McLaughlin  
Mrs. Dorothy Meehan-Ripa  
Robert Miller (M)  
Mr. & Mrs. Donald Miller  
Mr. & Mrs. Arthur Montano  
Col. & Mrs. Stanley Murday  
Mr. & Mrs. Jerald Murphy  
Mr. & Mrs. Rowland Myers  
Mrs. Marlene Nobles  
Mr. & Mrs. Robert L. Nydick (S)  
Mr. & Mrs. John Palko  
Ms. Cindy Pandola  
Mr. & Mrs. Stephen Pietrzykowski  
Mr. & Mrs. James Pillsbury  
Ms. Christina Pino  
Mr. & Mrs. Thomas Player  
Mr. & Mrs. John D. Plunkett (M)  
Mr. & Mrs. Anthony J. Polidora

Ms. Patricia Pretti  
Mr. & Mrs. Robert Pukas  
Mr. & Mrs. Richard Radtke (M)  
Mr. & Mrs. Lambert Rebstock  
Mr. & Mrs. Daniel Rendine  
Blaise Santangelo  
Mr. & Mrs. Edward Schmidt  
Mr. & Mrs. Thomas Schriver  
Mr. & Mrs. Terence Shea  
Miss Elizabeth Shellenberger  
Leonard Siegel  
Ms. Donna Singer  
Mr. & Mrs. Frank Sliker  
Mrs. Eugene Smith  
Mr. & Mrs. Albert Sontag  
Mr. & Mrs. Robert Stanton (M)  
Mr. & Mrs. J. Clark Steinman  
Mr. & Mrs. Anthony Sutherland  
Mark Sutton  
Mr. & Mrs. Stephen Tamburo, Sr.  
Ms. Avery Tatnall  
Henry Taylor  
Mrs. Beatrice Tramontana  
Mrs. Eileen Trost  
Cary Tye  
Mr. & Mrs. Philip Valvardi, Jr. (M)  
Mr. & Mrs. John Voglewede  
Voice of the Faithful of Greater Philadelphia  
G. William & Carol Wadlinger (S)  
Mr. & Mrs. Ronald Weber  
Mr. & Mrs. Woodrow Wendling  
Mr. & Mrs. Albert Westrum  
Florenca Wilkinson  
Mr. & Mrs. Richard Williams (M)  
Jennifer & Christopher Wofford (S)  
Mr. & Mrs. John Yannatell  
Ms. Margaret Young  
Mr. & Mrs. Donald Yusko  
Mrs. Margaret Zenner

### *MATCHING GIFT COMPANIES*

Accenture Foundation, Inc.  
Air Products & Chemical, Inc.  
American Home Products Corp.  
Astra Merck  
Becton Dickinson & Co.  
Bristol-Myers Squibb, Co.  
Caterpillar, Inc.  
The Chase Manhattan Bank, N.A.  
Chevron, USA, Inc.  
Chubb & Son, Inc.  
Colgate Palmolive Company  
Constellation Energy Group  
Dow Jones & Co., Inc.  
Exxon Education Foundation  
First Union Corporation  
General Electric Foundation  
Glaxo SmithKline  
Guardian Life Insurance Company of America  
HCR Manor Care  
IBM Corporation  
IKON Office Solutions  
IMS HEALTH  
J.P. Morgan Chase Foundation  
Johnson and Johnson  
Kimberly-Clark Foundation  
Knight-Ridder Inc.  
Land America Foundation  
Lockheed Martin Corporation  
May Department Stores Company

Merck & Company, Inc.  
Merrill Lynch Company, Inc  
Metropolitan Life Foundation  
Mobil Oil Corporation  
New York Life Insurance Company  
Pfizer, Inc.  
Praxair Matching Grants Program  
Procter & Gamble Company  
Prudential Ins. Co. of America  
Reynolds American Inc.  
Sempra Energy  
Shell Oil Company  
Sun Microsystems Foundation  
Matching Gift Program  
Telcordia Technologies  
Texaco, Inc.  
Towers Perrin Forster & Crosby  
Tyco Electronics Corporation  
The Vanguard Group, Inc.  
Verizon Foundation  
Wyeth International, Ltd.  
Xerox Corporation  
Zeneca Specialties

### *BUSINESS, INDUSTRY & FOUNDATIONS*

*Griffin Society*  
✧ The Navesink Foundation  
The W. W. Smith Charitable Trust  
*Logue Society*  
Anonymous  
Bill & Trudy Rutledge Foundation  
Clarence A. Rowell Fund  
Rocco & Barbara Martino Foundation  
*Fontbonne Society*  
✧ Beneficial Savings Bank  
✧ Chestnut Hill College Alumnae & Alumni Association  
Harold and Ann Sorgenti Family Foundation  
John C. & Kathryn S. Redmond Foundation  
Meniscus Limited  
Moore Cadillac Company  
New York Life Insurance Company  
✧ The Philadelphia Trust Company  
✧ Sempra Energy  
*Fournier Society*  
✧ Crown Holdings, Inc.  
✧ The Haverford Trust Company  
✧ Lois Pope LIFE Foundation  
Russell Roofing Company  
Thomas Wynne, L.P.  
*Clement Society*  
✧ 1600over90  
Alliance Bank  
Amerada Hess Corporation  
✧ The Arthur Jackson Company  
Christian R. and Mary F. Lindback Foundation  
Community Foundation of New Jersey  
D. M. Sabia & Co., Inc.  
✧ Deloitte & Touche, LLP  
Drexel University  
✧ Duane Morris, LLP  
Fenningham, Stevens & Dempster, LLP  
First Keystone Federal Savings Bank  
Garrison Printing Co., Inc.  
✧ The Gulati Family Foundation  
The Honickman Foundation  
Magarity Chevrolet and Ford, Inc.  
The Martin Foundation

✧ The Mary L. Ryan & Arthur P. Ryan, III Family Fund  
✧ McHugh Associates, Inc.  
✧ The Philadelphia Contributionship Rainer & Company  
✧ Robert G. and Isabelle W. Gundaker Family Fund of The Philadelphia Foundation  
Samuel P. Mandell Foundation  
✧ R. M. Shoemaker Company  
✧ Stradley Ronon Stevens & Young, LLP  
✧ Susquehanna Patriot Bank  
✧ T. James Kavanagh Foundation  
Tri-State Telecommunications, Inc.

### *Donors*

ADVANCED Termite/Pest Control  
*Alpha Sigma Lambda*  
Automotive Refinish Service Co.  
Barbin & O'Connell  
Bevilacqua Plumbing, Inc.  
Brucker & Whitacre Corporation  
Bruno's Restaurant  
Capital Appraisal Inc.  
Chestnut Hill Dental Group  
Copy Products  
Dagit\*Saylor Architects  
Father Jack Donohie Memorial Education Fund  
Follett Higher Education Group  
Geraldine Dougherty Company  
Keyspan  
Krum Financial Services  
Louis Iatarola Realty Appraisal Group, Ltd.  
Northwest National Mortgage Corp.  
Oakland Community College  
O'Rourke & Sons, Inc.  
Oxford Legal Associates, Ltd.  
Paul G. Curcillo, II, M.D.  
PFM Advisors  
Prism Color Corporation  
Robert Hughes-PODS  
Rodgers Realty Advisors  
SBC Telecommunications, Inc.  
Searchtec Holding, Inc.  
Seating Concepts, Inc.  
Shooters Post Transfer  
Smith Barney Citigroup  
Sovereign Bank  
T. Schneider Company  
Teva North America  
The Boothby Group  
The Camry Group, Inc.  
The Happy Butterfly  
The Montgomery Benefits Group  
Trans Union, LLC  
Transcontinental Direct U.S.A. Inc.  
Turner Construction Company, Inc.  
Virtual Storage Company, LLC  
Wilmington Trust of Pennsylvania  
  
*GIFTS-IN-KIND*  
Grace Banks, Ph.D. (F)  
Harry Barbin, III  
Beneficial Savings Bank  
Bryan Seaman, BJS Hardwood Floors  
Century 21 Alliance – Lafayette Hill  
Julie Chase '00  
Chestnut Hill College Athletic Department  
Janet Colaanni  
Marie Conn, Ph.D. (F)

Suzanne Conway, M.A. (F)  
Dominic Cotugno, Ed.D. (F)  
Wynne Crocetto  
Glenda B. Daulerio '73  
Maureen C. Dealy  
Mary C. Edwards  
Marian B. Ehnou '62 (S)  
Harold J. Fine, Ph.D.  
First Keystone Federal Savings Bank  
First Presidential Company  
Agnes Fox  
Beryl Gutekunst (F)  
Thomas Grasso, Jr. – Lincoln Investment Planning, Inc.  
Adrienne & Mark Guairrino  
Barbara Hogan, Ph.D. (F)  
Mimi and Steve Harvey  
IDC LTD  
David & Jessica Kahn (F)  
Tim Kelly (S)  
Phyllis T. Kennedy  
Krum Financial Services  
Dr. Susan Lanza-Jacoby  
R. Wayne Linde  
Bob & Carol Lockyer  
Magarity Chevrolet & Ford, Inc.  
Marie McAvoy  
Marie McMichael '90  
Rev. Terry M. Odien  
Office Basics, Inc.  
Marjorie O. Rendell  
Babraba Rice  
Charles Roop, CPA  
T. Schneider Company  
Agnes Shields, SSJ (F)  
Sentry Hospitality, Inc. – Mark Magarity  
Margaret Mary Smith, SSJ  
Mary Lynch, SSJ  
Kathleen Szpila, SSJ (F)  
Mark Sutton – Choice Hotels International  
Ted Taylor (S)  
Cary Tye  
Alex Varias (F)  
Kevin Vesci  
Sharon Viola – Soap Opera Company, Peddlers Village  
Margaret Zenner



CHESTNUT HILL COLLEGE BOARD OF DIRECTORS 2004-2005

**CHAIR**

Patricia Kelly, SSJ  
*President*  
*Sisters of St. Joseph of Philadelphia*

**PRESIDENT**

Carol Jean Vale, SSJ, Ph.D.  
*Chestnut Hill College*

**DIRECTORS**

Mary Barrar, SSJ  
*Member General Council*  
*Sisters of St. Joseph of Philadelphia*

Catherine Lockyer Bitting '92  
*Project Manager*  
*Thomas Wynne, L.P.*

Judith E. Campbell '69  
*Senior Vice President and Chief*  
*Information Officer*  
*New York Life Insurance Company*

Mary Dacey, SSJ  
*Member General Council*  
*Sisters of Saint Joseph of Philadelphia*

Frank L. Davey  
*Chairman*  
*John Evans' Sons, Inc.*

Stephen Gardner  
*Partner*  
*Deloitte & Touche, LLP*

Nan Hechenberger, Ph.D.  
*Consultant*

Marjorie Keenan, SSJ  
*Area Delegate*  
*Sisters of Saint Joseph of Philadelphia*

Alan M. Kelly  
*The Gilbert S. Kahn Dean of*  
*Veterinary Medicine*  
*University of Pennsylvania*

Miriam Gibbons Mandell '61  
*M.G.M. Consulting Company*

Barbara D'Iorio Martino '60



Anne P. Myers, SSJ, Ph.D.  
*Vice President*  
*Sisters of St. Joseph of Philadelphia*

Judith Oliver, SSJ  
*Coordinator of Ministry*  
*Sisters of St. Joseph of Philadelphia*

Catherine Robinson, SSJ  
*President*  
*Archbishop Prendergast High School*

Annemarie Roche, SSJ  
*Coordinator for Mission Effectiveness*  
*Sisters of St. Joseph of Philadelphia*

Barbara Spiro Ryan  
*Senior Vice President for*  
*Institutional Advancement*  
*Drexel University*

John Sabia, Jr.  
*President*  
*D.M. Sabia & Company*

Alma Rose Schlosser, SSJ  
*President*  
*Saint Hubert Catholic High School for Girls*

Nadya K. Shmavonian  
*Independent Consultant*

Ann Rusnack Sorgenti '58

Christophe Terlizzi  
*Executive Vice President of Commercial*  
*Real Estate*  
*Citizens Bank*

Robert J. Teufel  
*Chairman (retired)*  
*Rodale Press, Inc.*

Marianne McGurk Wallaesa '87  
*School Psychologist*

Ignatius Wang  
*President*  
*Urban Consultants, Inc.*

Ronald Zemnick  
*Senior Vice President*  
*Williard, Inc.*

Dorothy Urban, SSJ  
*Member General Council*  
*Sisters of Saint Joseph of Philadelphia*

**DIRECTOR EMERITUS**

Francis J. Dunleavy



CHESTNUT HILL COLLEGE ALUMNAE & ALUMNI ASSOCIATION BOARD OF DIRECTORS 2004-2005

**PRESIDENT**

Suzanne Schulz Dressler '71

**VICE PRESIDENT**

Regina Black Urmson '76

**SECRETARY**

Kathleen Shea Pié '87

**PAST PRESIDENT**

Regina Maxwell Schuille '65

**DIRECTORS**

Ellen Whiteside Byrne '56

Regina Ventresca Creedon '71

Marianne Valvardi Dwyer '76

Mary Levin Englebert '50

Joanne Fink '76

Amy McLeer Frangione '94

Rosemary Haenn '91

Barbara Jo Aherne Hartzell '68

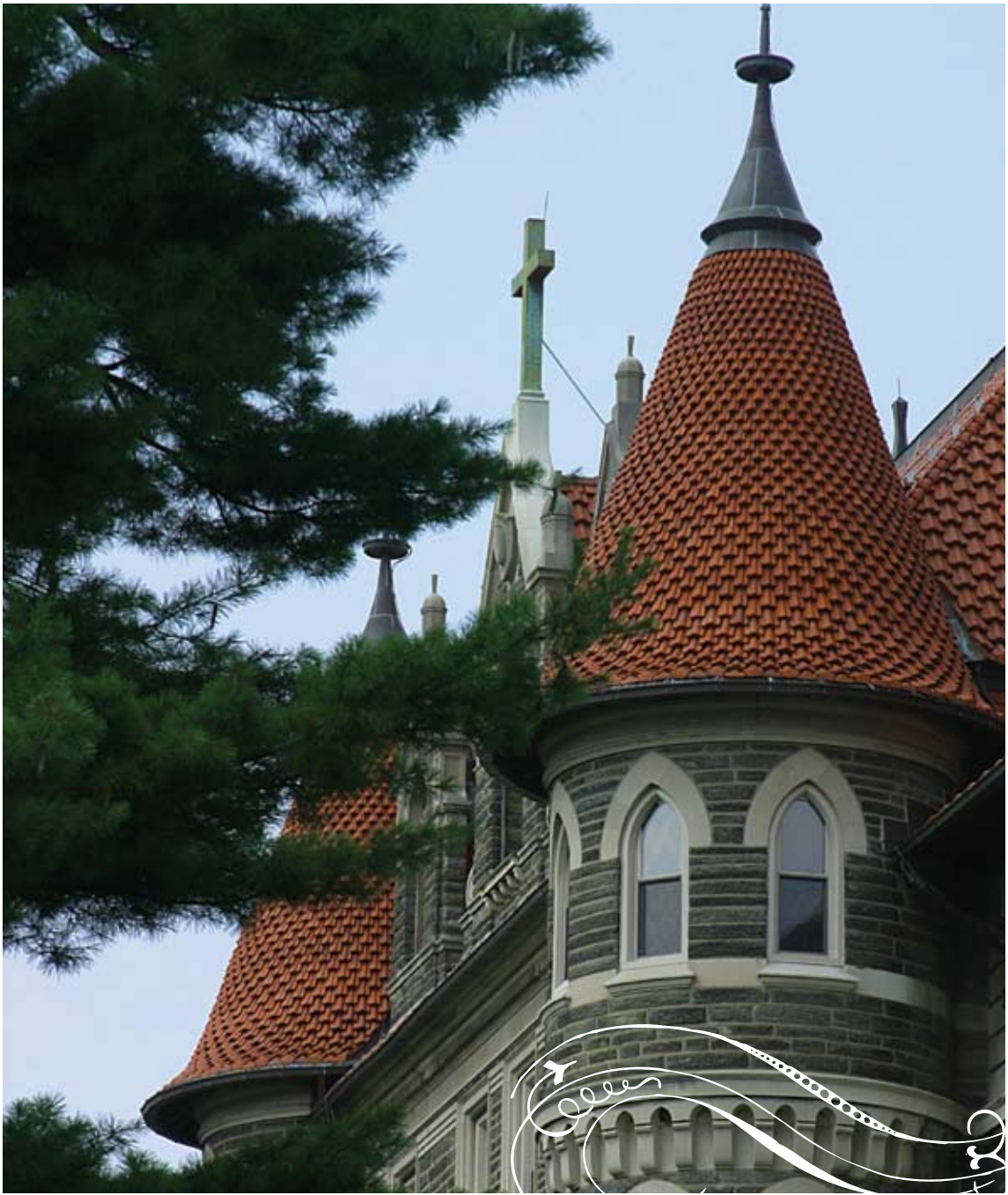
Mary Ann Keegan '45

Catherine Hebson McVicker, Ph.D. '65

Maureen Kelsey O'Hara '88

Annie Sampson '01

Angela Jones Willie '85



**CHESTNUT  
HILL  
COLLEGE**

9601 Germantown Avenue  
Philadelphia, PA 19118  
[www.chc.edu](http://www.chc.edu)

Non-Profit Org.  
U.S. Postage

**PAID**

Permit No. 14  
Flourtown, PA