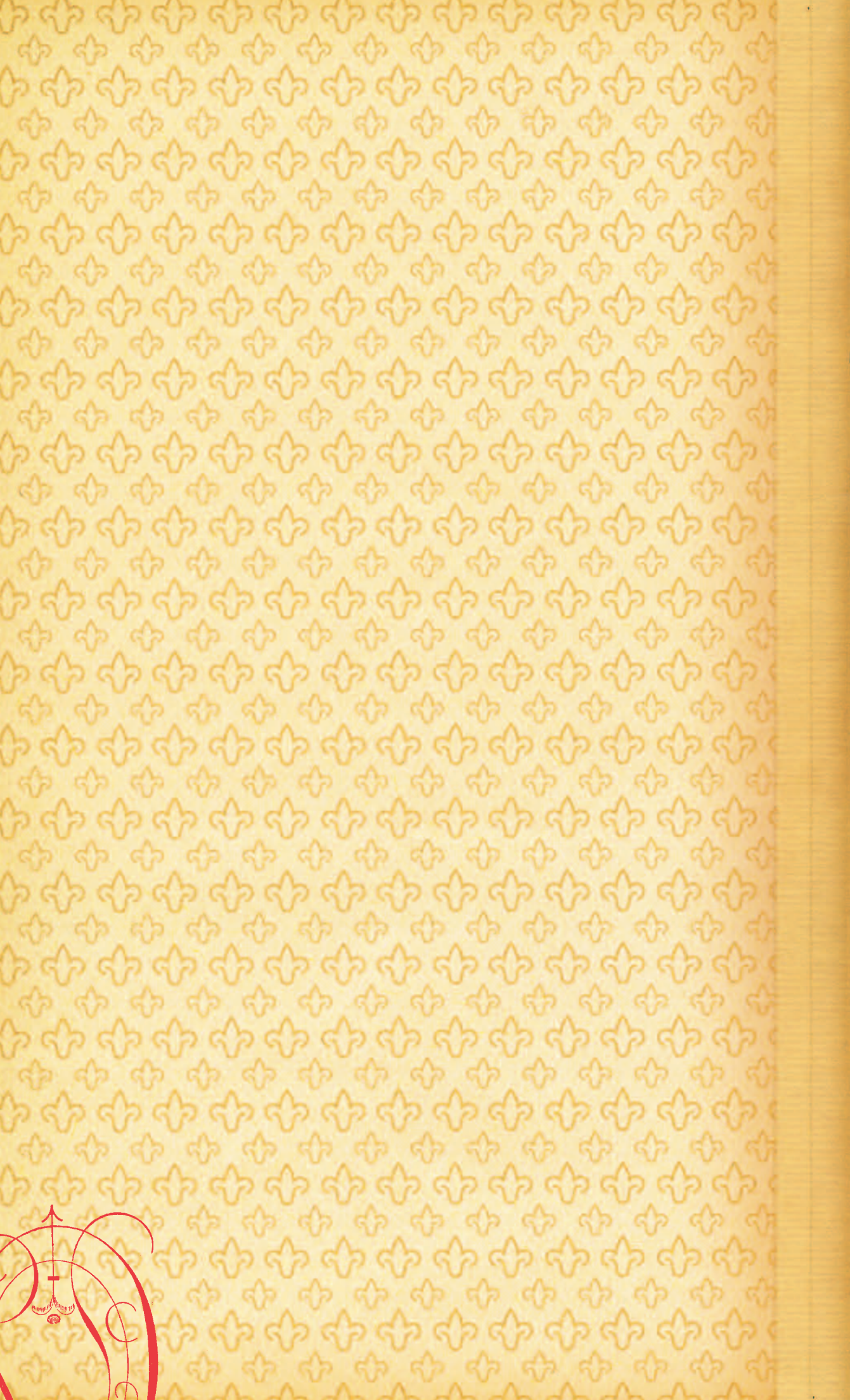




ANNUAL REPORT FISCAL YEAR 2003-2004







“We continue to build on strong traditions to ensure our future and aggressively meet the challenges of higher education in the 21st century.”

MY DEAR FRIENDS AND BENEFACTORS OF CHESTNUT HILL COLLEGE:

This year, we have seen the future of Chestnut Hill College crystallize. At one of the most pivotal points in our institution's history, we have shown again that a commitment to our ideals and traditions will result in a promising future for Chestnut Hill College. Indeed, the academic year of 2003-04 will be remembered for generations as the year that we became a coeducational college and extended the reach of our mission and values to a new and larger group of students. We continue to build on strong traditions to ensure our future and aggressively meet the challenges of higher education in the 21st century.

It is an exciting time on campus. We have seen our enrollment reach heights we would not have thought possible just a few years ago. Applications have risen by 67%, a figure that exceeded the expectations of enrollment consultants and outperforms other colleges who have transitioned to coeducation. We are attracting high quality, dedicated students with higher SAT/ACT scores. The hard work and support of so many has enabled us to be in an enviable position: imparting our values to young women and men who will become tomorrow's leaders.

As we continue to focus on our Catholic identity, the College was blessed to receive a \$100,000 grant, payable over three years, to explore and share the Chestnut Hill College/Sisters of Saint Joseph history and legacy. The grant will provide funds for all members of the College community to attend lectures, retreats, weekend conferences or weekends of prayer. In addition, we added two new faces to campus ministry: Rebecca Losinno, M.A., as Director, and Rev. Raymond Tribuiani, M.Div., as Chaplain.

Of course, the keystone of any great college is its faculty, and our dedicated group of professors is continually proving why students feel such a connection to Chestnut Hill. In particular, I would like to offer congratulations to two of our finest educators who have distinguished themselves with impressive achievements this year. Professor of French and Russian, Mary Helen Kashuba, SSJ, D.M.L., received the Dorothy Ludwig Excellence in Teaching Award - Post Secondary as well as the Pennsylvania State Modern Language Association Educator of the Year Award. Assistant Professor of Biology, William R. Miller, Ph.D., received an NSF grant of \$481,000 for a four-year research project. Furthermore, SEPCHE was the proud recipient of a federal grant of \$750,000 to support faculty development and teacher education programs in math and science.

We have made improvements to our physical plant and technology to meet the needs of our students. In 2003-04, we dedicated the Independence Blue Cross Fitness Center, refurbished the Student Life Center, and added new furniture for the residence halls. Academically, we expanded our undergraduate course offerings by adding new majors in Human Services and Criminal Justice. The School of Continuing Studies continues to grow, offering a combined program with the School of Graduate Studies. Students can now earn a B.A. in Human Services with a corresponding M.S. in Administration of Human Services, delivered in an accelerated format.

All of these wonderful achievements are made possible because of our graduates and friends. I am eternally grateful for the generosity demonstrated by so many. To continue the level of excellence that has existed here for 80 years, I hope we may count on your support for another 80 years, and beyond. I trust the Annual Report that you are about to enjoy is further proof that we are accomplishing great things at Chestnut Hill College, and inspires you to become a part of our success.

Gratefully,

Carol Jean Vale, SSJ

Sister Carol Jean Vale, SSJ, Ph.D.
President

COMMENCEMENT



A PERFECT DAY TO CELEBRATE

Beautiful weather greeted all of those who attended another amazing Chestnut Hill College Commencement on May 8, 2004. Pat Conroy, best selling author of *The Prince of Tides* and *My Losing Season*, delivered the commencement address to 374 students, the largest graduating class in the history of the College. (1)

As another group of students left to join the real world, we were also proud to recognize the following individuals with honorary degrees: Carole Haas Gravagno (left), Mary Noel Page and William Page (far right). (2)

Robert Meyer, Ph.D., professor of biology, was this year's recipient of the Christian R. and Mary F. Lindback Award for Distinguished Teaching (right). (3)



HONORS CONVOCATION

In April, Chestnut Hill College acknowledged outstanding academic achievement at Honors Convocation. The Honorable Frederica Massiah-Jackson '71, president judge of the Philadelphia Court of Common Pleas, delivered the address (1), while the Alumnae/i Association Distinguished Achievement Award was presented to Loretta M. McLaughlin '74, Frances Joseph Scarpello, R.A. '40, and Judith Cambell '69 (l to r). (2)

The Distinguished Service Award was given to Catharine Fee, SSJ, (3) and the St. Catherine Medal recipient was Jennifer Mowad '05. (4)

Emily Williams '04 received the Catherine F. Sladowski, M.D. '66 Prize, donated by Stephanie O'Connell Siegrist, M.D. '84. (5)



OCTOBER 13, 2003
WHITEMARSH VALLEY
COUNTRY CLUB

As the College celebrated its 21st Golf Invitational, we were pleased to honor a valued friend, outstanding supporter, and one of the founders of this important event, Tim Dunleavy, for his leadership, commitment, and service to Chestnut Hill College. (1)



21ST ANNUAL GOLF INVITATIONAL IN HONOR OF FRANCIS J. "TIM" DUNLEAVY

COMMITTEE (2)

Co-Chairs

Steve Gardner
Patricia Brabson

Committee Members

Christopher Cummings, Esq.
Pamela Cyr
Michael Dunleavy
Valerie Mikula Hughes, D.D.S. '74
Robert C. Lockyer
Andrew J. Miller
Lizanne Magarity Pando
Edward Vesey

MAJOR SPONSORS

Grand Slam

The Philadelphia Trust Company (3)

Masters

Beneficial Savings Bank (4)

Platinum

Alcan Aluminum
Crown Cork & Seal Company
Deloitte & Touche, LLP
The Arthur Jackson Company
Magarity Dealerships
RMB Roxborough Manayunk Bank
Sentry Hospitality/Mark Magarity
Stradley Ronon Stevens & Young, LLP
Williard, Inc.
Thomas Wynne Apartments &
Jericho Manor Apartments

Gold

Commerce Insurance Services, Inc.
Coupe Flowers
CYMA Builders & Construction
Managers, Inc.
Pam Cyr
First Keystone Federal
Savings Bank
Garrison Printing, Inc.
Gerald H. McGinley

Jef McGill

Rainer & Company - CPAs
Mary T. Sabia
SCT/Software & Resource
Management Corp.
Smart & Associates, LLP
We-Enroll Incorporated

Silver

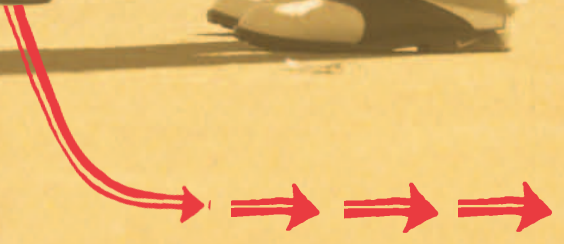
Alliance Bank
P. Agnes, Inc.
Chartwells College & University
Dining Services
Joseph P. Denny
Valerie Mikula Hughes, D.D.S. '74
In Honor of Mary Jo Larkin, SSJ
Mike Nolan, AT&T
Trans Union, LLC

HOLE SPONSORS

ARAMARK
Automotive Refinish Service
Company
Bevilacqua Plumbing, Inc.
Brucker & Whitacre Corp.
Bruno's Restaurant
Elko & Associates, LTD
Glackin Thomas Panzek, Inc.,
Landscape Architecture
Herman Goldner Company, Inc.
Hann Financial Service Corp.
Louis A. Iatarola Realty Appraisal
Group, Ltd.
Ted LaFair/Smith Barney,
Bala Cynwyd
Kathleen Herzog Larkin, Esq.
Francis E. McGill, Realtor
The Montgomery Benefits Group
Alan Reilly, Sovereign Bank
Rodgers Realty Advisors
Schock's Automotive, Inc.
Searchtec, Inc.
Starboard Capital Markets, Inc.
Mark Sutton & Family
Turner Construction Company

CONTRIBUTORS

Harry Barbin, III
Barbin & O'Connell
Brian Belcher
Beneficial Savings Bank
Catherine Lockyer Bitting '92
Patricia Brabson
Chestnut Hill Dental Group
CNN Headline News
Commerce Insurance Services, Inc.
Environmental Management
Group, Inc.
ESPN
First Presidential Company
FOX-TV
Tom Freeman, Traffic Kontrol, Inc.
Glackin Thomas Panzek, Inc.,
Landscape Architecture
Jane M. Hughes
Valerie Mikula Hughes, D.D.S. '74
IDC Centre, Inc.
Mark Krauter
Keough Electric
Kathleen Herzog Larkin, Esq.
H. Paul & Lydia Lewis
Magarity Dealerships
W.B. McCullough, III
Mary Lou Stafford McGill '54
Lizanne Mikula
The Outsourcing Partnership, LLC
The Philadelphia Flyers
Sentry Hospitality/Mark Magarity
Mark Sutton
Turner Construction, Inc.
Marianne McGurk Wallaesa '87
Thomas Wynne Apartments &
Jericho Manor Apartments



STUDENT ACTIVITIES

THE YEAR THE GRIFFINS SOARED

This year was historic for Chestnut Hill College athletics, as our women's soccer team won the AWCC Conference Title in its first year. (1) Also, the debut of the men's basketball team was met with big crowds and exciting games. (2) Individual Griffins also shined—Jen Banks '05 (front right) scored her 1,000th point for the women's basketball team. (3)

CHRISTMAS DANCE

Our College was again turned into a Winter Wonderland for the annual Christmas Dance. Everyone was decked to the 'nines' and had a wonderful time.

SENIORS SHARE A FINAL TOAST

Seniors toasted to the future at the annual Senior Wine Tasting, where they were officially welcomed into the Chestnut Hill College Alumnae/i Association. (4)

MUSIC MAN DRAWS RAVE REVIEWS

Standing-room-only crowds were delighted by this year's performance of *The Music Man*. Once the curtain went up, Chestnut Hill College's stars came out. (5)

CAROL NIGHT

As Christmas approached, a new generation of Griffins enjoyed the longstanding tradition of Carol Night. Songs, and the Christmas Spirit, filled the air. (6)

MASK & FOIL: YOU CAN'T TAKE IT WITH YOU

The student run production of *You Can't Take it With You* once again proved that Chestnut Hill College has some of the finest thespians around, as our students turned out another stellar production.

FOUNDER'S DAY

In September, the College community participated in Founder's Day as four alumnae panelists (l to r) Marie DiBerardino, Ph.D., '48, Angela Jones Willie '85, Catherine Lockyer Bitting '92, and Ellen Logue '47 described in

personal terms the impact of a Chestnut Hill College education on their life. Professor of History David Contosta, Ph.D. presided as moderator of the panel discussion. (7)

EMPTY BOWL DINNER

Our students once again showed their charitable spirit at the annual Empty Bowl Dinner. Over \$7,000 was raised during this enjoyable evening. (8)



The needs of a private college in today's world are many. As a small institution dedicated to teaching, Chestnut Hill College is largely tuition driven. Although tuition for undergraduates at Chestnut Hill College exceeds \$19,000, it provides only 60 percent of the real cost of educating a student. To maintain its tradition of excellence in education, Chestnut Hill College seeks to make up the difference through contributions. The College receives no financial assistance from the Catholic Church or the Archdiocese of Philadelphia, and funding from state or federal agencies is given only for specific projects or programs. Contributions from alumnae/i, parents and other friends to any of the funds listed below are investments in the College's future and help assure that a Chestnut Hill College education will be available for future generations.

OPPORTUNITIES FOR PROVIDING SUPPORT

ANNUAL FUND

To supplement the operating budget, the College seeks contributions each year from alumnae/i, parents, and other friends. These gifts are used to help with general expenses, providing assistance with everything from library acquisitions and faculty salaries to utilities and instructional supplies. Because this fund is critical to day-to-day operations, the College stresses its importance to all donors, asking that they continue to support the Annual Fund in addition to any other areas of specific interest.

REUNION GIVING FUND

Every five years, as they celebrate the anniversary of their graduation, classes are asked to consider undertaking a special fundraising effort. Some have selected specific physical plant projects, such as renovation of the alcoves in St. Joseph Hall or restoration of the Rotunda or renovation of the residence halls. Others have elected to establish a scholarship fund or underwrite landscaping needs. These special projects have helped the College with the extraordinary expenses of maintaining a large, historic, aging physical plant and providing financial assistance for deserving students.

ENDOWMENT FUND

Contributions to the institution's endowment are invested and only the income is used each year. Donors have chosen to invest in the College's future by endowing scholarships, lecture series, and other specially designed programs.

CAPITAL GIFTS INITIATIVE

This effort seeks funds for several specific renovation and construction projects. The projects were identified through a careful analysis of the campus as part of a Site and Facilities Master Plan and have been determined by the Board of Directors to be essential to the College's future growth.

CHARITABLE GIFT OPTIONS

Chestnut Hill College is a tax-exempt charity, acknowledged by the Internal Revenue Service as rating 501-C-(3) status. All contributions to Chestnut Hill College are fully tax deductible and may be given using any of the following methods:

OUTRIGHT GIFTS

- Gifts of cash may be given for any purpose. Checks or money orders should be made payable to Chestnut Hill College. Funds may also be transferred directly to the College's account via wire transfer.

- Gifts of appreciated marketable securities may be transferred to Chestnut Hill College for any purpose. Securities may be given via electronic transfer or by re-registering the shares in the name of Chestnut Hill College and mailing the certificates to the Vice President of Institutional Advancement. To avoid paying capital gains tax, the donor should give the shares directly to the College. As a tax-exempt organization, the College is able to sell the shares without paying tax. The donor's income tax deduction is based upon the value of the shares on the date they are given to the College.
- Paid-up life insurance policies, real estate, gifts-in-kind, appreciated property, closely held stock and other holdings may be given based upon their valuation and acceptance by the College.

For specific information about electronic transfers, please contact Lorraine Aurely, Vice President of Institutional Advancement, at 215.248.7103 or e-mail aurelyl@chc.edu

LIFE INCOME GIFTS

Life income gifts may be funded through outright contributions or pledges of a variety of assets, including those mentioned above. Life income options also include:

- Charitable remainder trust - separately managed trust funds that provide income to the donor for life. These may be established as annuity trusts, which provide a fixed amount of income, or as unitrusts, which provide income based upon a percentage of trust assets.
- Charitable gift annuity - offers a way to make a meaningful and major gift while benefiting the donor. This is an agreement between an individual and the College in which the donor transfers assets to Chestnut Hill College and receives fixed payments for the rest of her/his lifetime and/or the lifetime of another person.
- Deferred gift annuity - like a charitable gift annuity, a deferred annuity is a type of insurance contract that provides a fixed income. With this method, however, a donor contributes currently but does not begin receiving income until a later date.



BEQUESTS

Donors may choose to include Chestnut Hill College, Philadelphia, PA, as a beneficiary in their wills. The College may be named as the recipient of a specific amount or be designated to receive a percentage of the donor's estate. Donors may indicate a specific use for the funds or designate that they are unrestricted.

MATCHING GIFTS

Those donors who are employed, or whose spouses are employed, by companies with matching gift programs can provide additional support for Chestnut Hill College by designating the College as the recipient of matching funds. To learn whether your contributions may be eligible, contact your company's personnel office or write to the Office of Institutional Advancement at the College.

TRIBUTE FUND

Donors can support Chestnut Hill College by honoring or memorializing a special person or event. Tribute cards are sent advising the designated individual(s) of the gift but not the amount. Forms are available from the Office of Institutional Advancement; please call 215.248.7137.

ENDOWED SCHOLARSHIPS

CHESTNUT HILL COLLEGE FULL-TUITION, ROOM AND BOARD AWARDS

To establish a perpetual full-tuition, room-and-board award, a minimum gift of \$600,000 is needed. This principal will be invested and the income used for a scholarship (full-tuition, room-and-board) and reasonable administrative expenses. This award will be listed in the catalog when the entire \$600,000 has been received and the interest earned. Provisions for awarding will be discussed with the donor. The College reserves the right to choose the recipient and to award the grant.

CHESTNUT HILL COLLEGE FULL-TUITION AWARDS

To establish a perpetual full-tuition award, a minimum gift of \$500,000 is needed. This principal will be invested and the income used for a scholarship (full-tuition) and reasonable administrative expenses. This award will be listed in the catalog when the entire \$500,000 has been received and the interest earned. Provisions for awarding will be discussed with the donor. The College reserves the right to choose the recipient and to award the grant.

CHESTNUT HILL COLLEGE PARTIAL-TUITION AWARDS

To establish a perpetual partial-tuition award, a minimum gift of \$50,000 is needed. This principal will be invested and the income used

for a scholarship (partial-tuition) and reasonable administrative expenses. The award will be listed in the catalog. Chestnut Hill College reserves the right to choose the recipient and to award the grant after the entire \$50,000 has been received and the interest earned.

CHESTNUT HILL COLLEGE GRANTS (NOT ENDOWED)

FULL-TUITION AWARDS

For a full-tuition Chestnut Hill College grant, a donation of \$80,000 is needed. This covers tuition and fees for one student for four years. At the end of four years, the money will have been fully dispersed in tuition grants and administrative expenses. Chestnut Hill College reserves the right to choose the recipient and to award the grant. Donors may pledge to pay in increments of \$20,000 per year for four years.

PARTIAL-TUITION AWARDS

For a partial-tuition Chestnut Hill College grant, a donation of \$10,000 is needed. This covers partial-tuition and fees for one student for four years. At the end of four years, the money will have been fully dispersed in tuition grants and administrative expenses. Chestnut Hill College reserves the right to choose the recipient and to award the grant. Donors may pledge to pay over a period of four years.

MATCHING GIFTS POLICIES

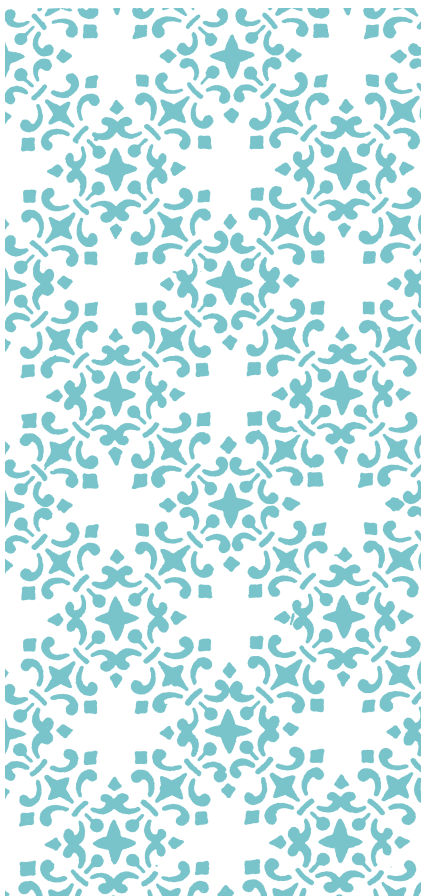
Chestnut Hill College welcomes matching gifts and encourages donors or their spouses who work for matching gift companies to apply for such donations. In administering matching gifts, the College follows national guidelines. Designation of matching gift funds is determined by each matching gift company. Funds are used for the same purpose as the employee's gift when received from corporations that so stipulate. For funds received from corporations that designate the match as unrestricted, the purpose is determined by the College. Recognition of matching gifts is determined as follows:

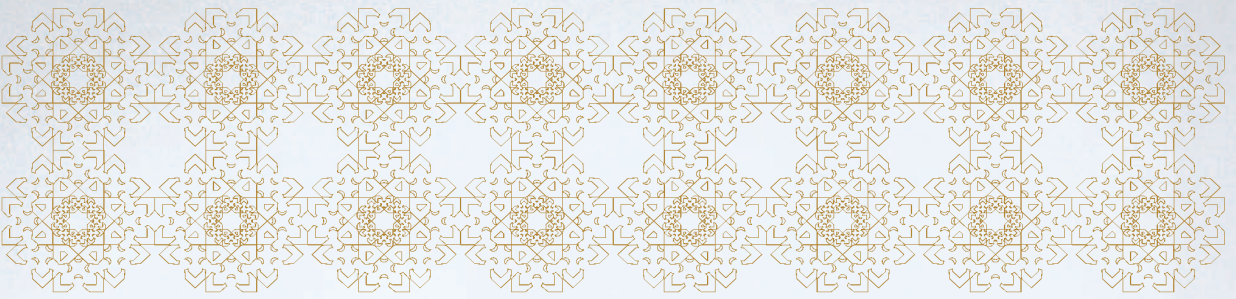
The match is the gift of the corporation. Companies are recognized in a special section of the Annual Report.

The names of individuals who obtain matching gifts are listed in the Annual Report and annotated to show that the College was designated to receive a match. The amount of the matching gift is not used to determine the individual's level of support; membership in gift clubs is determined only from the amount contributed directly by the individual donor.

IS THE DEVELOPMENT OFFICE FOR THE SISTERS OF ST. JOSEPH THE SAME AS THE COLLEGE'S?

Because Chestnut Hill College and the Sisters of St. Joseph are separate corporations and have different fundraising needs, there are two separate Development Offices. Contributions are not shared by these distinct entities. Donations to the College for its various needs are managed by the College's Development Office, a part of the Office of Institutional Advancement.

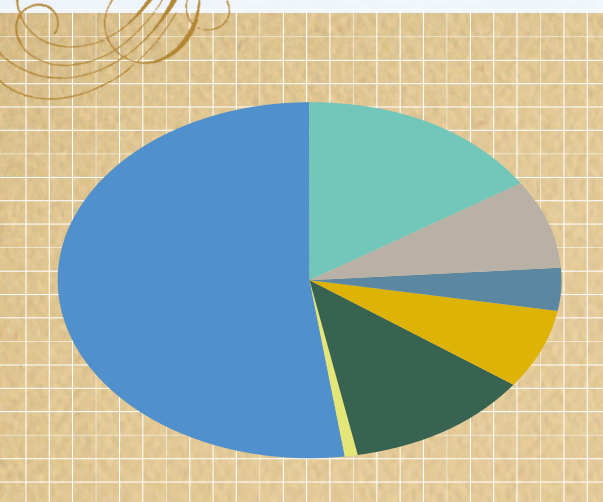




GIFTS AND GRANTS – JULY 1, 2003 – JUNE 30, 2004

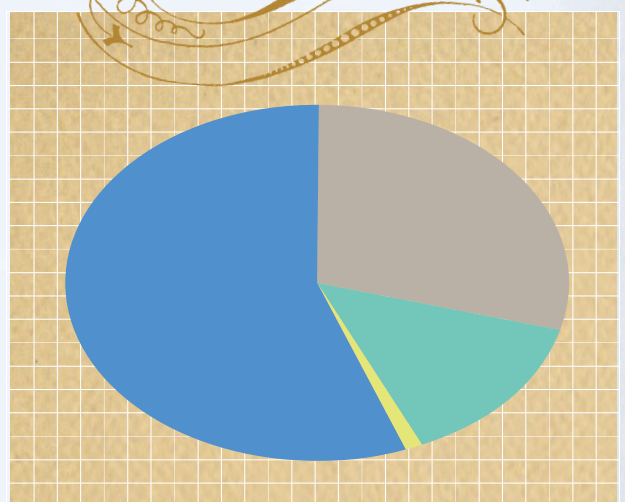
	ANNUAL FUND UNRESTRICTED	CAPITAL GIFT INITIATIVE	ENDOWMENT	OTHER	TOTAL
ALUMNAE/I	\$ 297,142	\$ 222,050	\$ 11,983	\$ 29,309	\$ 560,484
PARENTS & FRIENDS	\$ 95,750	\$ 156,265	\$ 4,367	\$ 22,345	\$ 278,727
CORPORATIONS	\$ 90,560	\$ 28,125	\$ 250	\$ 35,000	\$ 153,935
FOUNDATIONS	\$ 80,000	\$ 80,000	\$ 1,000	\$ 89,500	\$ 250,500
GOVERNMENT				\$ 412,687	\$ 412,687
MISCELLANEOUS	\$ 2,716		\$ 100	\$ 30,905	\$ 33,721
CONTRIBUTED SERVICES OF THE SISTERS OF ST. JOSEPH	\$ 450,000			\$ 1,383,133	\$ 1,833,133
TOTAL	\$ 1,016,168	\$ 486,440	\$ 17,700	\$ 2,002,879	\$ 3,523,187

GIVING BY CONSTITUENCY



ALUMNAE/I	16%
PARENTS & FRIENDS	8%
CORPORATIONS	4%
FOUNDATIONS	7%
GOVERNMENT	12%
MISCELLANEOUS	1%
CONTRIBUTED SERVICES OF THE SISTERS OF ST. JOSEPH	52%

GIVING BY PURPOSE



ANNUAL FUND/UNRESTRICTED	29%
CAPITAL GIFTS INITIATIVE	14%
ENDOWMENT	1%
OTHER	56%

PRESIDENT'S CIRCLE

FOUNDERS SOCIETY

(\$100,000 to \$999,999)

Mr. & Mrs. John R. Cochran, III

GRIFFIN SOCIETY

(\$50,000 to \$99,999)

Mr. & Mrs. Francis J. Dunleavy (M)
Rocco & Barbara Martino Foundation
(Barbara D'Iorio Martino '60) (D)
The Navesink Foundation
(Anne O'Shea Devlin '64)
The W. W. Smith Charitable Trust

LOGUE SOCIETY

(\$25,000 to \$49,999)

Anonymous
Suzanne Dufrasne '58
Independence Blue Cross & Blue Shield
Bill & Trudy Rutledge Foundation
(Gertrude Carlin Rutledge '63)

FONTBONNE SOCIETY

(\$10,000 to \$24,999)

Anonymous
Dr. Elizabeth M. Bowden
Chestnut Hill College
Alumnae & Alumni Association
Diane Driscoll, SSJ '63
Association of Independent Colleges
and Universities
John C. & Kathryn S. Redmond
Foundation
Harold and Ann Sorgenti Family Fund
(Ann Rusnack Sorgenti '58) (D)
Robert and Anne Brannan Teufel '60 (D)
John Walker
Marianne McGurk Wallaesa '87 (D)

FOURNIER SOCIETY

(\$5,000 to \$9,999)

Religious of the Assumption
Beneficial Savings Bank
Judith Campbell '69 (M) (D)
Young Shin Chang '59
Joseph P. Denny (D)
Deborah Dougherty Flint '59
Ellen Young Greenlee, Esq. '58
Michelle Sprague Guerard '66 (M)
Katherine Marschall, M.D. '69
Estate of Dolores Arnade Morin '35
The Philadelphia Trust Company
Frances McCullen Pierce '63
Janet Brown Quintal '70 (M)

CLEMENT SOCIETY

(\$1,000 to \$4,999)

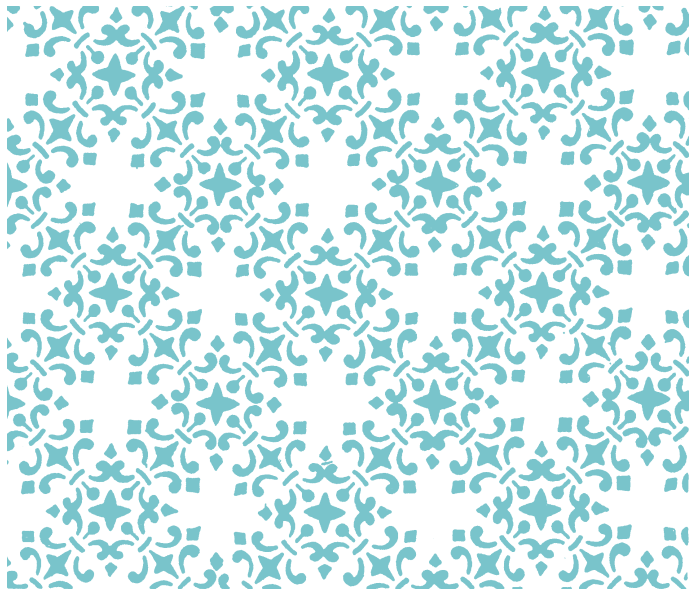
Patricia May Agger '63
Rosalie Reardon Albers, M.D. '39
The Arthur Jackson Company
Association of Independent Colleges
and Universities
Lorraine Aurely '71 (A)
Martina McCarthy Ball '66
Joan Hartmann Bamberger '54
Jana DeFrancesco Belansen '69
Maude Meehan Belli '49
Emma Lou Benignus
Carolyn Bensel, Ph.D. '63
Mary Merz Berko '52
James Bielunas and
Katherine M. Mezzanotte
Catherine Lockyer Bitting '92 (D)
Clare Hamilton Bohnett '71
Mary E. Brandt, Ph.D. '76
Robert Rini Cartlidge '49
Gloria Perla Coe '46
Elizabeth Conahan '72
Mary Connolly '50
Sally Ann Ayerle Corbley '73
Mary Lee Rothwell Corr '60
Katherine Rickert Coulson, Ph.D. '54
Joan Coyne '52 (M)

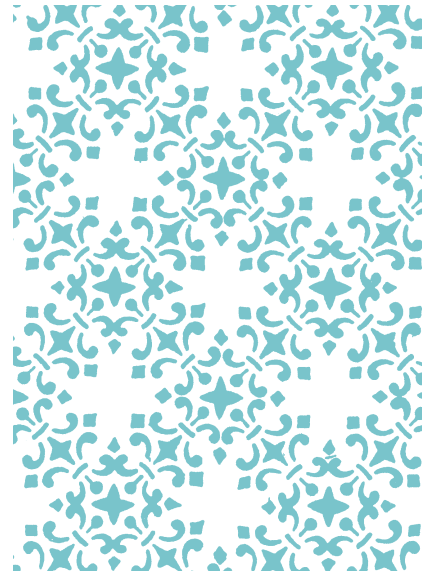
Ellen Jane Pariset Crosson '50
Regina Cuta, M.D. '56 (M)
Pam Cyr
Alice Ann Gricoski Dachowski, M.D. '77
E. Loretta Daly '47
Frank and Elaine Bennett Davey '65 (D)
Mr. and Mrs. Oliver Davies, Sr.
Lisa Fiorillo den Hamer '84 (M)
Eileen O'Rourke Deneen '54
Mary Katherine Schubert Denny '40
Caroline Devine '72 (M)
Gillian Horna Dezzutto '84
Adelaide DiBerardino '48
Marie DiBerardino, Ph.D. '48
Mr. & Mrs. John Doody
Valerie DeFelice Downing (SGS) '95
Barbara Middlebrook Doyle '53
Clara McNierney Doyle '54
Suzanne Schulz Dressler '71
John Durmala
Diane Neary Ewing '64
Barrie Thomas Fahey '59
Joanne Fink '76
William Finley
Mary Gallagher '70 (M)
Stephen Gardner (D)
Marcia Gehman, SSJ '63
Bettyanne Geikler '52
Robert Glackin (M)
Mary Isabel Lambert Glenn '61
M. Paula Nyhart Gowen '63
Patricia Tichenor Greer '62
Pamela Orsini Grimme '54
Helen Gruber '52
Rosemary Murphy Gulati '61
Isabelle Walsh Gundaker '65
Patricia Heekyun Han-Kim '85
Frances McCarron Harper '48
Catherine Griffiths Harrison (SGS) '98
Nan Hechenberger, Ph.D. (D)
Shirley Kieser Hoberg '47
M. Joan McGonigal Hofmann '63
Virginia A. Hogan '53
Lynne Honickman Foundation
Mrs. Quita W. Horan
Wilma Carson Kellerman, M.D. '55

Names are included in categories based on the donor's total contributions, for all purposes, received between July 1, 2003 and June 30, 2004. Percentage of class participation is listed next to class year.

Donor List Designations

- A – Chestnut Hill College Administration
- D – Chestnut Hill College Board of Directors
- F – Chestnut Hill College Faculty
- M – Matching Gift
- S – Chestnut Hill College Staff
- SCS – School of Continuing Studies
- SGS – School of Graduate Studies
- * – Deceased

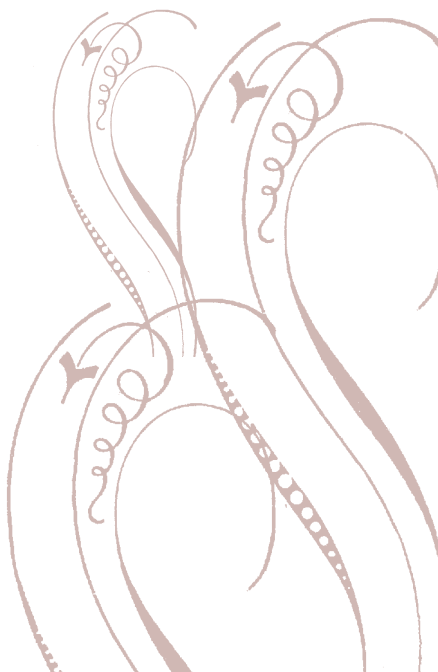




HALLMARK SOCIETY

Julia Heitzman Koechlin '66 (M)
 Joan Gerard Larkin '52
 Rosemary Hagan Lignelli '58
 The Christian R. and Mary F.
 Lindback Foundation
 Mr. & Mrs. Robert Lockyer
 Ellen Logue '47
 Patricia Crane Lynch '54
 Thomas Lynch
 Ms. Patricia Lyons
 Susan Keegan MacDuffie '64
 Anthony Maglio, Jr.
 Samuel P. Mandell Foundation
 (Miriam Gibbons Mandell '63) (D)
 The Martin Foundation
 Dorothy Wludyka Matthews, M.D. '54
 Joanne McFadden McBride '63
 Margaret Carney McCaffery '77
 Martha Wilderotter McDevitt '65
 Catherine Winter McDonnell '45
 Mary Lou Stafford McGill '54
 Madelyne Kasper McKee '74 (M)
 Joan Shelley McLaughlin '54
 Loretta McLaughlin (SCS) '74
 Anne Duffy Mirsch '52
 Anne Moore '51
 Blanche Haviland Moore '50
 Nonie Glennon Murphy '66
 Mary O'Gorman Murray '74 (M)
 Dorothy O'Brien '50
 Loretta Brennan O'Brien '46
 Shaun O'Malley (M)
 Margaret Richardson O'Rourke '51
 Mary Elizabeth Ounsworth (SCS) '92
 Mr. & Mrs. William Page
 Patricia Harper Petrozza, M.D. '74
 The Philadelphia Contributionship
 Susan M. Pisano '71
 Eileen Schulz Prior '64
 Mr. & Mrs. Bernard Rafferty (M)
 Rainer & Company
 Mrs. Mary Ann Restall
 Joanne Hayes-Rines '68
 Joan Toohey Rochford '52
 Maria MacCabe Ronca '54
 M. Gervase Rosenberger, Esq. '73
 Barbara Spiro Ryan (D)

Mary Kaufmann Ryan '66
 John Sabia, Jr. (D)
 Mary T. (Molly) Sabia
 Mr. & Mrs. David Schreffler
 Jane McChesney Schubert '49
 Jean Schwartz, M.D. '55
 Regina Maxwell Schuille '65 (M)
 Nadya K. Shmavonian (D)
 Kathleen McBride Shoup '61
 Stephanie O'Connell Siegrist, M.D. '84
 Marion Lacey Steet '46
 Kathleen McDermott Strott '59 (M)
 Lucile Sweeny '39
 Joan Taylor '87
 Anne E. Tezak '76 (M)
 Thomas Wynne, LP
 Lois Trench-Hines '64
 Mary Connelly Tripodi '37*
 Clara Tucker '52
 Eleanor Craig Utzig '56
 Patricia Kane-Vanni, Esq. '75
 Kathleen Wagner '60
 Denise Bonner Wall '58
 Ronald and Carol Voelmle Zernick '75



THE FOLLOWING INDIVIDUALS HAVE NOTIFIED THE COLLEGE OF THEIR INTENTION TO INCLUDE CHESTNUT HILL COLLEGE AS A BENEFICIARY IN THEIR WILL.

Anna M. Barone '57
 Margaret Betz '71
 Elissa Imbriaco Breiling '61
 Catherine Gallagher Brockway '51
 Madeline Conti '40
 Joan Coyne '52
 Elizabeth A. Croake '52
 Marjorie Piga Crain '48
 Suzanne K. Dufrasne '58
 Sally Donnelly '53
 Mary Jackson Fitzsimmons '35*
 N.A. Gillen '69
 Lynn Cozza Goodman '63
 Helen A. Gruber '52
 Joan Burnham Guokas '40
 Cecile Heebner Knies '63
 Mathilde Wackerman Higgins '38
 Mary-Jo Heile Hogan '48
 Lynn Cozza Goodman '63
 Kathleen C. Griffith Keene
 Margaret Mary McDermott Keeler '57
 Noriko Kikumoto '92
 Patricia Kilmartin '40
 Anne Rogers Law '43*
 Elizabeth Harvey Majane '57
 Marita O'Reilly Marshall, Esq. '61
 Elizabeth Meehan
 Joan Menaquale '53
 Lisa Rounds Miles '82
 Ellen Miller '68
 Kathleen O'Pella '76
 Mary Vernier Ozzello '50
 Dorothy Palatucci '64
 Christine Westrum Porter (SCS) '94
 M. Nancy Burczewski Portland '64
 Joan Toohey Rochford '52
 Mr. and Mrs. Thomas Schriver
 Clare Shanahan '56
 Christine Desrochers Smith '60
 Anne E. Tezak '76
 Maureen Schmidt-Thielens '62
 Mary Connelly Tripodi '37*
 Andrea Wargo, Ph.D. '72

MEETING A CHALLENGE WITH INCREDIBLE SUCCESS.

The academic year of 2003-2004 marked a turning point in the history of Chestnut Hill College. As we welcomed our first coed class, we moved toward a new era, but were steadfast in our commitment to our traditions and mission.

THE MISSION OF CHESTNUT HILL COLLEGE IS TO PROVIDE STUDENTS WITH HOLISTIC EDUCATION IN AN INCLUSIVE CATHOLIC COMMUNITY MARKED BY ACADEMIC EXCELLENCE, SHARED RESPONSIBILITY, PERSONAL AND PROFESSIONAL GROWTH, SERVICE TO ONE ANOTHER AND TO THE GLOBAL COMMUNITY, AND CONCERN FOR THE EARTH.



Chestnut Hill College, founded by the Sisters of Saint Joseph in 1924, is an independent, Catholic institution that fosters equality through education. Faithful to its strong liberal arts tradition, Chestnut Hill College offers academic programs of excellence in the areas of undergraduate, graduate, and continuing studies.

True to its Catholic heritage, Chestnut Hill College espouses the beliefs and values inherent in the Judeo-Christian tradition while it respects the contributions made by other faith traditions in the development of the whole person. The College nurtures a sense of integrity, spirituality, and social justice in all.

The College community dedicates itself to four purposes in fulfilling this mission. It seeks:

- to provide avenues for students to achieve academic excellence and to pursue research in their major field or in interdisciplinary studies. The College encourages students to explore and experience diverse curricula and to participate in exchange programs with other institutions of higher education.
- to initiate links between the world of learning and the world of work through curricular planning, technological opportunities, and career preparation. The College guides students in applying theoretical learning through experiential education designed collaboratively by faculty and students.
- to uphold an atmosphere of communal respect in which all may clarify and articulate personal values and beliefs while exploring the ethical and moral dimensions underlying all relationships. The College encourages inter-faith opportunities by acquainting all students with Catholicism, its theology and its Judeo-Christian roots, and by engaging in dialogue with women and men of other beliefs.
- to create local and global connections that enable students to respond to the needs of others through service-oriented enterprises. The College educates students to identify and to address issues of social justice and to work toward systemic change.

ACCOMPLISHMENTS FOR 2004



ENROLLMENT RISES AGAIN

We've posted record breaking figures regarding admissions for the second straight year. Open Houses featured overflow crowds and our coed marketing yielded tremendous results. Through the hard work and dedication of many, we are proud to report that the School of Undergraduate Studies had the largest incoming class in the 80-year history of Chestnut Hill College.

Our public profile was also on the rise, as we were the winners of the prestigious Admissions Web Site Award. *Admissions Marketing Report*, which is a monthly magazine that covers the admissions marketing field for colleges, universities, vocational and proprietary schools, chose www.chc.edu as the best Web site out of nearly 4,000 submissions!

Additionally, our bold move to become a coed institution brought a plethora of press to Germantown Avenue, as we were featured on ABC, CBS, FOX, WB, NBC, CN8, KYW News Radio 1060, and the *Philadelphia Inquirer*.



The Philadelphia Inquirer

LECTURE SERIES

Our lecture series continued to further the dialogue of many topics of interest to the academic world. This year, we welcomed lectures from World War II refugee Liesl Loeb, Christopher Lowney (1), author of *Heroic Leadership*, Pedro Juri, Ph.D., of McNeil Pharmaceuticals, Nobel Prize winner Dr. Stanley B. Prusiner (2), and Dr. Katherine Marschall '69, an anesthesiologist at Yale University School of Medicine. (3)

The Kennedy Legacy Conference featured speakers Edward Berkowitz, Ph.D., (second from left) and keynote speaker and Kennedy scholar, Robert Dallek, Ph.D., (third from right) author of *An Unfinished Life: John F. Kennedy, 1917-1963*, with members of the History and Political Science Department. (4)



ALUMNAE/I ACHIEVEMENTS AND ACTIVITIES

In November, an elegant cocktail and raffle party was graciously held at the home of Mary Ann Stahl Patton '87, enabling many alumnae to reconnect with one another.

Santa greeted alums and their families at the annual Alum Family Christmas Open House which perfectly set the mood for the holiday season. (1)

Mary Levin Englebert '50 (left front) and Jane Wilson Dunne '50 (right) participated in a wonderfully successful Leadership Conference that helped create the first Alumnae/i Association Strategic Plan. (2)

The Day of Renewal was a special event for all who attended in March.

Chestnut Hill College celebrated its rich athletic history in February with a halftime alumnae/i awards ceremony honoring its 26 championship teams and individual record-breaking athletes. (3)



ART AUCTION

At the preview on May 15 in Sorgenti Arena, guests browsed the selection of more than 150 custom-framed and matted works of art provided by Ross Galleries of New York for the College's first Art Auction benefit. (1)

Auction Chairperson Catherine Lockyer Bitting '92 welcomed alumnae/i to an evening of lively bidding. (2)

COMMITTEE

Chairperson

Catherine Lockyer Bitting '92

Committee Members

Sharon Cameron Baldwin '76

Patricia Canning '70

Elaine Bennett Davey '65

Joanne Fink '76

Joanne DiGiacomo Lechowicz '66

Delia Schiavi Melograna '42

Kathleen O'Boyle '84

Hedya Baez Toth '77

Patricia Kane-Vanni, Esq. '75

MAJOR PATRONS

Reception Sponsor

Thomas Wynne Apartments &
Jericho Manor Apartments

Platinum Patrons

John Evans' Sons, Inc.
Mary Kaufmann Ryan '66 &
Arthur P. Ryan, III

Gold Patrons

Barbin & O'Connell, Attorneys
at Law

Frank & Elaine Davey '65

Madeleine Bennis Degnan

Stephen G. & Regina Maxwell
Schwille '65

Weaver & Reckner Dental
Associates

Silver Patrons

Community Chiropractic Center



PROGRAM BOOK SPONSORS

Sloane Automotive Group

J.O.B. Design & Construction Co., Inc.

Knights Tavern/Eleanor Driscoll

Community Chiropractic Center

Dr. Dawn Cute, Chiropractor

Hot Nails



REUNION WEEKEND 2004



The first weekend in June was a time for old acquaintances to be renewed at Reunion Weekend. Amid all of the joyous reunions, the Alumnae/i Association was proud to present Barbara D'Iorio Martino '60 with the Eleanore Dolan Egan '28 Award for Outstanding Service to Chestnut Hill College. (1)

REUNION 2004 APPEAL

CLASS	REUNION	RESPONSE	AMOUNT
1934	70TH	80%	\$ 40
1939	65TH	4%	\$ 25
1944	60TH	41%	\$ 1,835
1949	55TH	31%	\$ 3,640
1954	50TH	66%	\$ 17,610
1959	45TH	32%	\$ 8,260
1964	40TH	21%	\$ 6,770
1969	35TH	9%	\$ 2,205
1974	30TH	17%	\$ 3,035
1979	25TH	3%	\$ 195
1984	20TH	18%	\$ 5,865
1989	15TH	3%	\$ 325
1994	10TH	4%	\$ 205
1999	5TH	1%	\$ 10
SUBTOTAL		19%	\$50,020
MATCHING			\$ 1,690
TOTAL REUNION			\$51,710



PRESIDENT'S CIRCLE

CHESTNUT HILL COLLEGE IS DEEPLY GRATEFUL TO THE FOLLOWING DONORS WHO CONTRIBUTED \$1,000 OR MORE TO THE ANNUAL FUND IN 2003-2004.

Alcan Aluminum Corp.
 Rosalie Reardon Albers, M.D.
 Lorraine Aurely '71 (A)
 Martina McCarthy Ball
 Beneficial Savings Bank
 Jane DeFrancesco Belansen
 Maude Meehan Belli
 Emma Lou Benignus
 Catherine Lockyer Bitting '92 (D)
 Clare Hamilton Bohnett '71
 Elizabeth M. Bowden, LL.D.
 Mary E. Brandt, Ph.D.
 Judith E. Campbell (D)
 Roberta Rini Cartlidge
 Young Shin Chang
 Chestnut Hill College Alumnae/i Association
 Pat and John Cochran
 Gloria Perla Coe '46
 Mary Connolly
 Sally Ann Ayerle Corbley
 Mary Lee Rothwell Corr
 Joan Coyne
 Crown Holdings, Inc.
 Ellen Jane Pariset Crosson
 Regina Cuta, M.D.
 Drs. Edward and Alice (Gricoski) Dachowski '77
 E. Loretta Daly
 Frank and Elaine Davey (D)
 Oliver and Deborah Davies
 in memory of our daughter, Tiffaney Faith
 Deloitte & Touche, LLP
 Mr. & Mrs. Joseph P. Denny (D)
 Mary Katherine Schubert Denny
 Adelaide DiBerardino
 Marie DiBerardino, Ph.D.
 Mr. & Mrs. John Doody
 Barbara Middlebrook Doyle
 Suzanne Schulz Dressler '71
 Suzanne K. DufRASne '58
 Mr. John Durmala
 Barrie Thomas Fahey
 Joanne Fink '76
 in memory of Marien Fink
 Deborah Dougherty Flint

Mary Gallagher
 Stephen A. and Anne Gardner (D)
 Marcia A. Gehman, SSJ
 Bettyanne Geikler
 Robert N. Glackin
 Mary Isabel Lambert Glenn
 Patricia Tichenor Greer '62
 Helen Gruber
 Shelley Sprague Guerard '66
 The Gulati Family Foundation
 Isabelle Walsh Gundaker '65
 Patricia Heekyun Han
 Frances McCarron Harper
 Kate Griffiths Harrison
 Shirley Kieser Hoberg
 Virginia A. Hogan
 Quita W. Horan
 The Arthur Jackson Company
 Patricia Kane-Vanni, Esq. '75
 and Cigus Vanni
 Wilma Carson Kellerman, M.D. & Edwin Kellerman, M.D., J.D.
 Julia Heitzman Koechlin
 In Memory of Rosemary D. Krueger
 Rosemary Hagan Lignelli
 Bob and Carol Lockyer
 Ellen Logue
 Patricia Crane Lynch
 Thomas Lynch
 Susan Keegan MacDuffie
 Samuel P. Mandell Foundation
 (Miriam Gibbons Mandell) (D)
 Rocco & Barbara Martino (D)
 Joanne McFadden McBride
 Monk and Mari Wilderotter McDevitt '65
 Madelyne Kasper McKee '74
 Loretta M. McLaughlin
 Anne Duffy Mirsch
 Anne Moore
 Jacques and Blanche Haviland Moore '50
 Estate of Dolores Arnade Morin
 Duane Morris, LLP
 Francis X. & Nonie Glennon Murphy
 in memory of Elizabeth McHugh '36
 Mary O'Gorman Murray
 The Navesink Foundation
 (Nancy O'Shea Devlin)
 Loretta Brennan O'Brien
 Mr. & Mrs. Shaun F. O'Malley
 160over90
 Margaret Richardson O'Rourke '51
 Mary Elizabeth Ounsworth

Bill and Mary Noel Page
 Patricia Harper Petrozza, M.D.
 The Philadelphia Contributionship
 The Philadelphia Trust Company
 Frances McCullen Pierce
 Susan M. Pisano
 Kenneth and Janet Brown Quintal
 Mr. & Mrs. Bernard Rafferty
 Mary Ann Restall
 Joanne Hayes-Rines '68
 RMB (Roxborough Manayunk Bank)
 Joan Toohey Rochford
 Maria MacCabe Ronca
 M. Gervase Rosenberger '73
 in memory of Rita Schubert Rosenberger '44
 Trudy Carlin Rutledge '63
 Mary Kaufmann Ryan '66
 Barbara Spiro Ryan (D)
 Mr. & Mrs. John Sabia, Jr. (D)
 Mary T. Sabia
 David Schreffler
 Jane McChesney Schubert '49
 in memory of Thomas M. Schubert, Esq.
 Jean Retta Schwartz, M.D.
 Stephen G. and Regina Maxwell Schwillle '65
 Nadya K. Shmavonian (D)
 In Memory of Sr. Grace Marie Sisters of Saint Joseph of Philadelphia
 Harold A. & Ann R. Sorgenti (D)
 Marion Lacey Steet
 Stradley Ronon Stevens & Young, LLP
 Kathleen McDermott Strott
 Lucile Sweeny '39
 Robert & Anne Brannan Teufel '60 (D)
 Anne E. Tezak '76
 Catherine and Luke Trench
 Mary Connolly Tripodi*
 Tri-State Communications, Inc.
 Clara Tucker '52
 Eleanor Craig Utzig
 Kathleen M. Wagner
 in memory of Mr. and Mrs. William Wagner
 Denise Bonner Wall '58
 Harry and Marianne McGurk Wallaesa (D)
 Williard, Inc.
 Thomas Wynne, L.P.
 Mr. & Mrs. Ronald Zemnick (D)



Members of the Fleur de Lis Society were recognized at a reception held at the Pennsylvania Academy of Fine Arts where American realist artist Bo Bartlett conducted an exclusive tour of his painting retrospective "Heartland." (1)
 Blanche Haviland Moore '50, Jacques Moore, Carter and Frances McCullen Pierce '63 (1 to 1). (2)
 Director of Planned Giving, Mary Theresa Shevland, SSJ, Isabelle Walsh Gundaker '65 and her husband, Robert Gundaker (1 to 1). (3)
 Carol Jean Vale, SSJ and Alumnae/i Association President Suzanne Schulz Dressler '71. (4)
 Mrs. John (Ginger) Sabia, David Loder and Nadya K. Shmavonian (1 to 1). (5)

Joan Wood McEnaney (M)
Anne McGeehan McGovern
Kathleen Canedo Mee
Joan Menaquale
Nancy Leonard O'Connor
Agnes Dorasavage Palko
Maria Pan Schipper
Joan Eichenberg Sinclair
Louise Torracco
Helene Hornyak Tuckwood
Carmen Costanza Veit
Selma Koury Wunderlich

CLASS OF 1954 (79.2%)

Joan Hartmann Bamberger
Mary Nagle Bell
Marguerite Heiken Breslin
Marie McCriden Burke
Joan Alford Callahan
Rose Ann Baron Clarke
Maureen Newman Considine
Madeleine Gercke Costigan
Katherine Rickert Coulson, Ph.D.
Joanne Malatesta Davidoff
Carole Sarubbi de Castro
Eileen O'Rourke Deneen
Clara McNierney Doyle
Muriel Watman Dreswick
Jeanne Cooney Dwyer
Mary Teresa O'Hara Dwyer
Mary Wiesner Edell (M)
Roberta Bushey Glackin
Ann Wiesner- Glickman
Pamela Orsini Grimme
Virginia Redmond Grover
Grace Corr Haenn (S)
Evelyn Talley Hankins
Margaret Higgins
Joan Murphy Inman
Anne Smith Jahn
Margaret Keegan Lawn
Elizabeth Leddy Ledwith
Mary Jo Harrington Leonard
Anne Branagan Letter
Patricia Crane Lynch
Joanne McWilliams Martin
Dorothy Wludyka Matthews, M.D.
Ann Brosseau McCall
Evelyn McCrossen McChesney
Marguerite Barrett McEwen
Mary Lou Stafford McGill
Patricia Galvin McGlynn
Joan Shelley McLaughlin
Ernestine Petorella Medeck
Mary Resinski Murphy, M.D.
Catherine O'Flaherty
Mary G. Hayes Reardon
Dolores Dillon Regan
Elizabeth MacDuffie Reger (M)
Janice Arleth Reilly
Elizabeth Case Reynolds
Joan Camillery Roche
Maria MacCabe Ronca
Kathryn Gruber Satori
Mary Jane Maher Smith
Joan McCafferty Stapleton
Jane Maguire Starke
Margaret Greene Stube
Judith Sullivan
Maureen Parks Todd
Elizabeth Krug Ulrich
Anita Esposito Varga

Frances Pollock Vaught
Aileen Maguire Walsh
Irene A Wagman Zielinski (M)

CLASS OF 1955 (45.7%)

Joan McDermott Bellwoar
Mary Juel Rockwell Boast
Marguerite Tague Brown
M. Ann Ryan Byrnes
Joan Yates Carroll
M. Carol Snyder Collins
Kathleen Snyder Dalena (M)
Joanne Rossberg De Santis
Joanne Waldron Dwyer
Patricia Hickey Fabricius
Eva Raieta Girone
Catherine Condon Johnston
Jane Keating
Wilma Carson Kellerman M.D.
Lois Steppacher Lazzarino
Margaret Hoffmann Lyman (M)
Suzanne Hoban Matunis
Dorothy Stemmler Maurer
Barbara McGurn
Jane Rafferty Mueller
Barbara Beers Oberle
Mary Elizabeth Peek
Frances Costa Peters
Mildred Renner Pfeifer
Carolyn Deiter Piccone
Patricia Johnson Rauch, Ph.D.
Judith Dougherty Reidy
Raquel Rodriguez-Rexach
Barbara Ellis Ryan
Jean Schwartz, M.D.
Patricia Gallagher Starkey
Gwendolyn Feaster Trautwein

CLASS OF 1956 (49.2%)

Mary Ellen McFadden Barry
Patricia Howard Bastoni
Maryann Wessel Beitel
Janet Rutan Bowers
Barbara Costigan Brennan
Ellen Whiteside Byrne
Catherine Malloy Byron
Mary Sue Williamson Carney
Beverly Kray Connolly
Regina Cuta, M.D. (M)
Beatrice T. Jungblut Dante
Charlotte Branagan Farley
Mary Jane Gillespie
Constance Bissell Gleeson
Anne Daly Holland
Jane Ellen Higgins Kelly, Ph.D.
Betty Amici Larson
Esther Moriarty McCarthy (M)
Claire Mauger McCrane
Lorraine Sukalski McGlynn
Marianne Miller
Patricia Belcher Monaghan
Martha Hentz Murray (M)
Barbara Griffiths Olivieri (M)
Martha Freiling Peterson (M)
Ann Corr Potterton
Suzanne Bourgeois Rabil
Marylou Dughi Sklar
Eleanor Craig Utzig
Agnes Costello Walker
Patricia Andris Walsh
Lynn Murray White

CLASS OF 1957 (41.7%)

Marie Meaney Adolph
Anne Dever Bancroft
Anna M. Barone
Constance Murray Becker
Marie Pelliccio Berenato (M)
Rosemary Mahoney Boyle
Letitia Smith Brown (M)
Mary Ellen McClain Carson
Kathleen Daniel
Margaret Walsh Davies
Clare Anne McDonald Diviny
Maryanne Rafferty Dunmire
Patricia Amend Ellard
Mary Jane Harford Ferro
Jean Williams Harris
Arlene Hausmann
Lois Heiart
Audrey Ward House (M)
Barbara Dunn Hunter
Margaret Mary McDermott Keeler
Roxanne Talley King
Theresa Mazeika (M)
Mary Spence McCue
Beverly Johnston McIntyre
Margaret McNierney McPhillips
Annunciata Torrese Milani
Alberta Heinzelman O'Brien
Suzanne Sullivan O'Brien
Diane Napoli O'Grady
Rosemary Peacock Rychlewski
Ann Malaney Savage (M)
Joan McFadden Sawoski
Lynne Fowler Scarpello
Kathleen Gercke Silk
Katherine Labrecque Skiba
Phyllis Sullivan Stacy
Miriam Fenerty Sullivan
Rosemarie Walsh Taima
Adrienne Wardell
Carolyn Giblin Webb (M)

CLASS OF 1958 (52.1%)

Mary Eichhorn Adams, Ph.D.
Maryanne Hahl Anderson, Ph.D.
Mary Dugery Brandenstein
Clare McConnell Brown
Elizabeth Kincaid Canapary
Jolande Jong Chiu
Rosemarie O'Brien Cleaver (M)
Virginia Reilly Coester
Dianne DeGiacomo
Suzanne Dufasne
Joan Enright
Elaine Bevilacqua Falco
Elizabeth Solnek Farrell
Joan McDermott Forry
Mary Jane Pasha Franco
Ellen Young Greenlee, Esq.
Sarah Mansell Guilfoyle
Janet McAninley Hallermeier
Gwendolen Forsyth Hurley
Barbara Merck Kearns
Margaret Garr Knoblock
Regina Franco Kriskey
Marianne Sim Lee
Rosemary Hagan Lignelli
Joanne Ryan Luecke
Regina Gercke McConnell
Maureen Maclean McCord, Esq.
M. Eileen Foxhill McGlone
Anna Marie McKenna
Margaret Quinn Mohr
Helen Rosmilia Mourino
Nora Golden O'Malley (M)

Joanne Pascuzzi
Mary Pollitt
Carolyn Inglesby Rusin (M)
Deborah Werst Seigman
Margaret Walsh Shubnell
Ann Rusnack Sorgenti (D)
Jean Campbell Sterling
Mary Maines Sullivan
Lois Hoffner Udicious
Kathryn Hibbs Voit
Helen Gleeson Wachendorfer
Denise Bonner Wall
Dorothy Holmes Wentland
Anne Butler Wigmore
Helen McCann Williams
Janice Kitley Yurasek
Marguerite Stein Zuccarello (M)

CLASS OF 1959 (46.1%)

Mary Ann Miller Beatty, Ph.D.
Miriam Quinn Blimm
Martha Wohlfert Cacciamani (M)
Margaret Dickinson Campbell
Young Shin Chang
Barbara Harron Delaney
Patricia Turvey Dellomo
Anne Caruso Desy
Kathleen M. Donnelly
Barrie Thomas Fahey
Deborah Dougherty Flint
Eleanor Mason Gulczynski
H. Barbara Johnson Hock
Patricia Kelly Holt
Anne Harvie Howard
Patricia Harford Hueber
Charlotte Kelley Hyer
Joan Niessen Kerby
Zita Levy King
Jean Peters Kinney
Marguerite McCrane Klinger
Raimonda Binkis Kontrimas
Margaret Dougherty McCall
Anita McLaughlin
Roberta Price Messa
Mary Dalsey O'Donnell
Carole Storch O'Dwyer
Mary Rose Gallagher O'Neill
Mimi Whiteside Pruett
Anna Dechet Reller (M)
Patricia Hamborsky Roddy
Barbara Stoll Russell
Ann McNamara Scanlan
Phyllis Gott Shea
Kathleen McDermott Strott (M)
Cecily McDonald Suchy
Ann Brennan Toner (M)
Colleen Ward Volpe
Mary Pat Wallace
Anne McGinnis Whittington
E. Barry Dolaway Woolson

CLASS OF 1960 (38.7%)

Carol Cheleden Alcorn
Anastasia Hagan Bacon, Ed.D.
Kathryn Agle Barry
M. Claudette Rupp Bayer
Patricia Doran Benkovic
Roseanne Burke Brennan
Bernadine McGrath Brown
Marion Gioffre Buddo
Camille Ferro Burns, Ph.D.
Catherine Budenbender Carolan

Helen Kates Casey (M)
Mary Lee Rothwell Corr
Margaret Cushing
Mildred Murphy DeRiggi
Marie Micale Dumbra (M)
Eileen Long Hessman
Anne DePiano Holderness
Joan Koenig Hynes
Mary Serroi Jaklevic (M)
Judith Bourgeois Jensen
Margaret Michel Johnson
Patricia Kisielewski Juenger
Mary O'Neil Keegan
Susannah Linton Kirchner
Henriette Horchler Leanos, Ph.D.
Patricia Leonard Marcoux
Barbara D'Iorio Martino (D)
Kathleen Newman Marion
Barbara Wenthe McCarthy
Margaret Bennett McGreal
Barbara Benedetti McNichol
Michele Mustello
Mary Magee Onofrietto, Ph.D.
Anne March Roan
Christine DesRochers Smith
Patricia Walsh Sterner
Marie Gallagher Sweezy
Regina Voelker Tauke (M)
Anne Brannan Teufel
Helen Mikula Vassily
Kathleen Wagner
Mary Gallagher Wattis

CLASS OF 1961 (45.9%)

Carol Gray Bacica
Ellen Barrett
Elissa Imbriaco Breiling
Lynne Smith Brown
Nancy Nuffort Brown
Margaret Burns Bulfer (M)
Martha Murphy Burns
Katherine Alcamo Cardali
Barbara Piontek Carpenter
Maureen Gillen Chan (M)
Rosemary Tighe Cozzolino
Mary Jo Abrachinsky Doherty
Barbara Donovan
Barbara Gallo Draper
Catherine Brannan Dunn
Jeanne Labrecque Gagliano
Sharon Smith Gardlund
Sarah Bean Gentry
Mary Isabel Lambert Glenn
Beatrice Gallagher Grabish
Rosemary Murphy Gulati
Isabelle M. Healy
Sandra Johnson Helverson (M)
Sheila Overbaugh Hennessy
Eileen Pollock Holden
Maureen Dearie Husk
Kathryn Coyne Keegan (M)
Kathleen McCarthy Kelly
Patricia Orna LeVarn (M)
Ann Tushim Linck (M)
Judith Hadden Lutolf
Miriam Gibbons Mandell (D)
Marita O'Reilly Marshall
Eleanor Archie McCarron
Marilyn Johnson McCarron
Rose Fabio McKenna
Helen Baum Miller (M)
Barbara Folsom Murch

Margaret Lynch Panas
Elizabeth Dyer Ranc
Linda McKenna Roxe
Susan Enright Ryan
Nancy Koonmen Schmidtman
Kathleen McBride Shoup
Rosemary Amberg Spezzo
Kathleen Mahoney Sykes
Angela Clement Tague
Elaine Bevevino Trevey
Mary Ann Fiori Tysko
Mary Alice Butler Warwick
Suzanne Pfizenmayer Wiley

CLASS OF 1962 (33.7%)

Catherine L. Albanese, Ph.D.
Mary Coady
Maureen Masterson Doern
Kathleen Braun Dollenberg
Nancy Quinney Dominis
Adrienne Donaghue Gallagher
Noel Riley Gallagher
Margaret O'Donnell Garrett
Eileen D'Arcy Garvey
Kathleen Gavigan Esq.
Patricia Tichenor Greer
Kathleen Boyle Jarvis
Mary Laffan King
Kathleen Kugler
Irene Loughman Kutner
Sandra Glynn Lippe
Catherine Ondrey Mailloux
Denise Love McDaid
Margaret Green McLaughlin
Diane Gillies Momic
Elizabeth Halasz Moore
Janice Koloski Murdza
Margaret Conlan O'Brien
Margaret Martin Purcell
Annemarie Fliegel Quigley
Alexandra Masiuk Rakowsky
Mary Jane Petriella Ruvo
Dorothy Spence Schere
Ellen Kelley Sheehan
Rosanne Grasmeyer Steitz
Sara Young Stoll
Eileen Bradley Stonier
M. Joyce Renzulli Wuenschel

CLASS OF 1963 (29.3%)

Patricia May Agger
Mary Ruth Wiegard Becker
Carolyn Bensel, Ph.D.
Natalie Nolan Berkey
Marion Williams Berry (M)
Catherine Smith Burton
Diane Driscoll SSJ
Margaret Fick Edmonds
Kathleen Finnegan
Mary Ellen Boyle Fitzpatrick
Kathleen Heidere Ford
Gertrude Dearie Frekko
Marcia Gehman, SSJ
Lynn Cozza Goodman
M. Paula Nyhart Gowen
Sheila Duffin Gray
Mary Jo Collins Griffin
Mary Ann Conway Gursky, Esq.
Rose Anne Di Santo Hannum
M. Joan McGonigal Hofmann
Cecilia Hunt
Isabel Porreca Johnson

Alison Turnbull Kelley
Mary Grace Grall Killmer
Cecile Heebner Knies
Zenaida Ancheta Krablin
Patricia McAdams Ph.D.
Joanne McFadden McBride
M. Eileen Daly McDonough, Ed.D.
Mary Aldrich Merman
Cynthia Burlick Murphy
Frances McCullen Pierce
Joanne Casacio Regli
Elizabeth Sieburg Richter
Gertrude Carlin Rutledge
Carroll Lanman Schleppe
Janice Maio Schmid
Rosalie Papa Shaw, Ed.D.
Martha Malone Shockey
Katherine Roach Sullivan
Joan Willey Thirion
Elizabeth Tucker Werner
Mary Lou Smith Williams

CLASS OF 1964 (34.7%)

Virginia Pachence Azzariti
Mary Margaret Moore Baker
Pamela Ann Black
Alice Ann Goldkamp Bossow
Evelyn Galla Bratton (M)
Carolyn O'Donnell Consor
Ellen Clearkin Corrigan
Barbara Cruse (M)
Terese Wolf DeCamara
Anne O'Shea Devlin
Diane Neary Ewing
Mary Jane Tynebor Fearn
Regina Bennett Fleming
Dolores Furlan (M)
Paula Murphy Gallagher
Mary Goldschmidt Galloway (M)
Joyce Finnegan Garrison
Judith Kearney Griffith
Marianne Carlson Hall (M)
Georgene Mann Hartmann
Agnes Hendrick
Lois Trench- Hines
Moirra Hurley, M.D.
Margaret Sewell Krivda (M)
Mary Jo Bonner Lubas,
M.D., Ph.D. (M)
Susan Keegan MacDuffie
Julia Koenig Maher
Lorraine Cajano Minecci (M)
Marie Costello Moore
Phyllis Coppola Neill
Carol Neri
Mary Jo Ingham Nolin (M)
Alice Reilly Paduch
Dorothy Palatucci (M)
Denise Murphy Phillips
Eileen Weber Phillips
M. Nancy Burczewski Portland
Eileen Schulz Prior
Amelia Petitti Quaremba, Ph.D. (M)
Margaret Jackson Quinn
Susan Schatz Reed
Sharon Marie Rooney, M.D.
Mary Ellen Scanlan, Ph.D.
Jo-anne Fatibene Semmel
Diana Stango Smoluk
Mary Schuhsler Spangler, Ed.D.
Nancy Connelly Straka
Sally Cavanaugh Strike (M)

Kathleen Olsen Sullivan
Jerilyn Louis Tierney
Mary Ann Costello Yankosky

CLASS OF 1965 (26.4%)

Carol Lowe Ambacher (M)
Maryanne Reilly Andrews (M)
Patricia Chiri Bell
Joan Goldschmidt Browne
Helen Chaykowsky
Denise Belcher Crenshaw
Elaine Bennett Davey
Kathleen Reilly Gallagher (M)
Marie Sclafani Goldkamp
Isabelle Walsh Gundaker
Joan Ellen Obrecht Hathaway
Eileen Hanle Hitchingham, Ph.D.
H. Patricia Hynes
Mildred Bell Kaliss
Elizabeth Newmiller King
Mary Hennessey Krutulis
Marybeth Honeyman Leary
Janice Hughes Ledebur
Bernadette Bennis Marshall
Patricia Jeskey McDermott
Martha Wilderotter McDevitt
Bonnie Vasey McDonald
Kathleen Martin McFadden
Elaine Palmer Meisinger
Elizabeth Wible Molloy, Ph.D.
Sheila Murphey, M.D.
Susan Brown Penrose
Phyllis M. Roche
Connie Bellini Roggio
Regina Maxwell Schuille (M)
Zdanna Krawciw Skalsky
Loretta Canalichio Steinmetz
Donna Harrington Strok
Denise Duckworth Tumelty

CLASS OF 1966 (25.4%)

Regina Mongelli Ammerman
Kathleen Rex Anderson, Ed.D.
Martina McCarthy Ball
Kathleen Donahue Bruyere, USN, Ret.
Nancy Denny Chancler
Karen Urbani Ciliberti
Elizabeth Burns Cusack
Rita Giordano Dedyo
Mary O'Connor Gentile, Ed.D.
Carol-Jane Piltz Guardino (M)
Michelle Sprague Guerard (M)
Erma Fricchione Herr
Sandra Denenberg Hohberger
Julia Heitzman Koechlin (M)
Margaret Marshall Kramer (M)
Helen Quinn Lawlor
Marie Ryan Leonard
Kathryn McFadden MacDonald
Nancy McDonald Mason
Mary Mulderry Mattson
Joan Coletti Metallo
Nonie Glennon Murphy
Mary Delia 'Tye Neuman, Ph.D.
Elaine Miskuff Olson (M)
Bernadette Cosenza Prozzillo
Lorraine A. Revello
Mary Kaufmann Ryan (M)
Mary J. Salzman
Mary Lou Sciarillo
Matilda Cavella Souchak
Christine Eidsness Tantisunthorn
Margaret Seidel Walton

CLASS OF 1967 (26.8%)

Margaret Madden Bell
Mary Pat Gallagher Boyle
Joanne Bonavita Budwick
Frances Gercke Carey
Joanne Paskowsky Carr
Margaret Kress Carson
Anne McDyre Cheney (M)
Catherine Devlin
Linda Taraborrelli Donahue
Kathleen Keirle Dougherty, Ph.D. (M)
Katherine Toland Frith, Ph.D.
Helen Kain Galli
Suzanne Dames Gibbs
Diane Taglialatela Green
Margaret Brabazon Henry
Barbara Jani
Joan McFadden Jernee
Joan Burger King
Patricia Walsh King
Nancy Del Valle Korbeck
Kathleen Herzog Larkin, Esq.
Anne E. Cashman Lilly
Margaret Judge Lynch
Dorothy Kushlis Macfarlane, M.D.
Dorothea Klebacher Magyar (M)
Kathleen Malaney, M.D.
Marian Fanning McNamara, M.D.
Denise Gray Meehan
Margaret C. Moran
Mary Jane Briggs Morgan
Maureen Hennessey Murdock
Jean Brennan Pivetz
Mary Quinn
Kathleen Campbell Schugsta (M)
Margaret DiSanto Storti
Barbara Ann Lopresti Weber
Mary Kunberger Wehrmann
Antoinette Whitmore

CLASS OF 1968 (26.4%)

Rosalie Marinari Akouka, M.D.
Denise Reilly Blasdale
Kathleen Clauss Borkowski (M)
Theresa Elmendorf Carroll
Mary Grimley Cornelius
Mary Beth McKeon Dacey
Faith Peoples Dillon
Molly Walsh Donovan, Ph.D.
Maureen Colleran Doyle
Joyce Maurin Fonash, Ph.D.
Jane Foulkrod Galvin
Maryann Campbell Gans
Judith VanStone Golderer
Kathleen Corcoran Griffith-Keene
Patricia Quinn Hayden (M)
Maureen Burns Heacock (M)
Joan Edmund Husted
Rosa Teresa DiFrancesco Lee
Joan Lunney Ph.D.
Margaret McKee Madison
Rosemary Marino Mangano
Kathleen Engel Marshall
Constance Brown Masciangelo (M)
Maryanna Kane Massey
Ellen Miller (M)
Miriam Berry Moore
Penny Grellis Morrison
Patricia Parrella Orlando
Elizabeth Patterson-Patterson
Joanne Hayes-Rines
Kathleen Long Russell
Maryanne Vallely Wagner
Mary Ann Wischusen, Ph.D.

CLASS OF 1969 (27.7%)

Roberta Romano Acchione (M)
 Carol Dragonetti Avicolti
 Eleanor Yoa Ayers
 Mary Louise Fumo Barton
 Jana DeFrancesco Belansen
 Judith Campbell (M)
 Gioia Cianciosi
 Caroline Horn Cyr
 Joan Fry Donahue
 Madeleine Dupree Dosch, M.D.
 Regina Mellor Dudney
 Nancy Himmer Esposito (M)
 Denise Gervase Ferrier, Ph.D.
 Milrose Lavigna Gallun
 Kathy Fowler Goodyear
 Susan Rapp Halczenko (M)
 Margaret Johnson
 Martha Bender Jollie
 Susan Taylor Kelly
 Anna Gibino Kerr
 Stephanie Comerford Kramer
 Barbara McCabe Ludlam (M)
 Katherine Marschall, M.D.
 Margaret Matthews
 Susan McHugh, Ph.D.
 Regina McKeever
 Kathleen McNicholas, M.D.
 Rita Mulville
 Eileen Walker Phoebus
 Joan Pollitt (M)
 Evelyn Guarnieri Powers
 Katherine Safford Ramus
 Judith Lee Rieder
 Sally Ruttle
 Alice-Marie Donovan Schwenkler
 Johanna Bawduniak Smeller
 Nancy Starecky
 Dorothy Griffith Wiseman
 Teresa Rhodes Wolliard

CLASS OF 1970 (22%)

Marilyn Sutton Adomanis
 Margaret Waltz Baloga
 Felicia Corsaro Barbieri, Ph.D.
 Kathleen Vath Campbell (M)
 Patricia Canning
 Marie Ficca Coyne
 Arlene Amoroso Del Pizzo
 Lydia Maiorca Driscoll (M)
 Barbara Walker Erhard
 Claudia MacFadden Fletcher
 Mary Jane Logue Foelster
 Mary Gallagher (M)
 Helen Hall (M)
 Maria Pugliese-Hieble, M.D. (M)
 Jane Serrada Lang
 Diane Hugues McGinty
 Nadine Morse Noble
 Judith Anne Paul (M)
 Judith Perkins
 Janet Brown Quintal (M)
 Patricia Johnson Skopal
 Diane Stanczak (M)
 Katherine Barrett White

CLASS OF 1971 (22.7%)

Lorraine Aurely (A)
 Clare Hamilton Bohnett
 Bernadette Hynes Borro
 Monica Cetrullo Costlow
 Regina Ventresca Creedon

Suzanne Schulz Dressler
 Judith Flynn Haskell
 Susan Beyer Henschel
 Phyllis Finarelli Kenning
 Ann O'Connor Levering
 Elizabeth Lamb Lillie
 Clare Ammend Magee
 Rita McCloskey Mizioroko
 Catherine Myers
 Geraldine Nuzzo
 Susan M. Pisano
 M. Susan Carr Pontoski
 Frances Rafferty, Esq., Ph.D.
 Barbara Eni Ristaino
 Roberta Rothwell Schillo
 Karen Sherlock
 Joy Supil Siegel
 Ann Marie Smith Sielski
 Frances Skiendzielewski
 M. Terri Frank Terni
 Mary McKenna Thorne
 Kathleen Wall
 Carolann Buchy Wesley
 Mary Kelly Whalen

CLASS OF 1972 (17.1%)

Margaret Helbling Baumann
 Christine Scott Beck
 Sallyann Bowman, M.D.
 Patricia Caldwell
 Elizabeth Conahan
 Caroline Devine (M)
 Anna Faris DiFranco (M)
 Andrea Varricchio-DiVito, Ph.D.
 Margaret Durkin Esq.
 Mary Lynne McCarthy Ekdahl
 Kathryn O'Neill Fisher
 Eleanor MacMahon Frank
 Frances Bonanni Hay
 Kathleen Mooney Hennessey
 Elizabeth Lunney (M)
 Patricia McNichol
 Margery King Roby
 JoAnne Sidoti Schmidt, D.D.S
 Joanne Schmidt, Ph.D.
 Joan Bendinger Soltis
 Margaret Hetzer Stuart
 Kathleen Carlin Weiss

CLASS OF 1973 (18.5%)

Adele Schmitz Bissonette
 Mary Little Collins (M)
 Sally Ann Ayerle Corbley
 Gienda Battistini Daulerio
 Mary Ellen Brady Eck
 Denise O'Neill Fleming
 Kathleen McKeon Graham
 Ana Hulewsky Krysiak
 Jean McWilliams, Ed.D.
 Elizabeth Ryan Meehan
 Barbara Mercer Panek
 Elizabeth Green Perkins
 Patricia Maher Roop
 M. Gervase Rosenberger, Esq.
 Christine Woolston Scenna
 Elizabeth Mayer Strickland
 Patricia Warner Strolle

CLASS OF 1974 (27.1%)

Christine Binkowski Andrews
 Marsha Humphries Boex
 Paula DeSanctis Bonavitacola

Carlota Garcia Colberg
 Janet Powers Dunne
 Margaret M. Englebert
 Joanne Fidler
 Christine Fitzpatrick (M)
 Mary Catherine Fitzsimmons (M)
 Marilyn Pepe Frazier
 Margaret Mascioli Giuntini
 Maureen Clearkin Glanzmann
 Valerie Mikula Hughes, D.D.S
 Elizabeth Mallon Hunter (M)
 Anita Chiu Kan (M)
 Jane Gleason Kenda
 Mary Sher Kenney
 Mary Lenore Gricoski Keszler, M.D.
 Sara Duke Larkin
 Rosemary Leone
 Susan Lyons
 Madelyne Kasper McKee (M)
 Christine Bersheim Morawski
 Mary O'Gorman Murray (M)
 Mary Kinahan- Ockay
 Patricia Harper Petrozza, M.D.
 Patricia Kenney Quinn
 Barbara Alworth Sheridan
 Mary MacAvoy- Strawitz
 Eden Eisler Sullivan
 Leona Valentine
 Joan Cawley Watson
 Elizabeth Sauter Weber
 Susan Wilderotter
 Anne Guardino Yaccarino

CLASS OF 1975 (18.1%)

Mary Ackroyd
 M. Susan Dougherty Burke, M.D.
 Janine Delaveau Dwyer
 Wanda Feletski
 Kathleen Boran Gotthelf
 Jane Tomalonis Gursky
 Karen Verdi Liuzzi (M)
 Denise Roney McGonigal
 Nancie Ann Kenny Moebius (M)
 Virginia Flynn Morris
 Ngozi Onyewuenyi Oleru, Ph.D.
 Lynne Huddleston-Ruff
 Patricia Kulbitsky Schramm
 Cynthia Strolle (M)
 Regina Williams Tate, Esq. (M)
 Patricia Kane-Vanni, Esq.
 Mary Capece Weinstein
 Angela-Jo Castranova Wetzel
 Carol Voelmle Zennick

CLASS OF 1976 (16.9%)

Sharon Cameron Baldwin
 Mimi Strolle Bender
 Mary E. Brandt, Ph.D.
 Diane Scicchitano Dannenfeler
 Regina Kenny Davenport (M)
 Joanne Fink
 Alida Scarafone Freeman
 Mary Ann Velten Gilman
 Katherine Crosson Hylinski
 Kathleen O'Pella
 Karen Rhodes Platt
 Anne E. Tezak (M)
 Regina Black Urmson
 Anita Haskins Wise (M)



CLASS GIVING 2003-2004

CLASS OF 1933 (25%)

Kathryn Brown Davis (M)
Helen Ryan Deitrich

CLASS OF 1935 (20%)

Bettina Clemons Juers
Dolores Arnade Morin *
Irene Testa Rotello

CLASS OF 1936 (21.4%)

Margaret Sword Blackmon
Mathilde Wackerman Higgins
Jean Cohen Weiss

CLASS OF 1937 (36%)

Elizabeth Shultz Arendt
Rita Schwartz Boyle
Margaret Lieberman Brennen
Blanche Byrnes
Dorothy O'Neill Cashman (M)
Leonore Smith Crowley
Harriett Fitch Fitzgerald
Mary Jane McGinnis McDonnell
Mary Connelly Tripodi*

CLASS OF 1938 (25%)

Betty O'Hara Anders
Mary Birney Foley
Margaret Golden
Helen Healy McIntyre
Mildred O'Mahony Partel
Ruth Fischer Weber

CLASS OF 1939 (34.6%)

Rosalie Reardon Albers, M.D.
Eileen Finucane McKenna
Carol Burnham McQuade
Kathryn Marnel Morris
Leonore O'Connor O'Hara
Lucile Sweeny
Mary Thompson Wagman
Helen Schad White
Elizabeth Oswald Wible

CLASS OF 1940 (33.3%)

Ann Barrett (M)*
Margaret Kelly Baumgardner
Madeline Conti
Mary Katherine Schubert Denny
Joan Burnham Guokas
Patricia Kilmartin
Lee Bailey MacMurtrie
Mary Barbara O'Neill Philpott
Margaret Walsh Ryan

CLASS OF 1941 (30%)

Amelia Carballeira Abella
Eugenia Cooper Comerford
Cecilia Kline Finley-Guthier
Nylda Gotay Hatton
Elizabeth Richardson Kelly
Regina Manson Kemp
Eleanor Weth McMahan
Ruth Mulligan
Rita Cresci Quinn

CLASS OF 1942 (35%)

Dorothy Walsh Ball (M)
Mary Gorman Brown-Jednak
Elsie DiMarino Carroll
Lorraine Delafrange Deeney
Madeleine Bennis Degnan
Katherine Hinchey Forsythe (M)
Rita Cook Lade
Delia Schiavi Melograna
Ruth Englehardt Murphy
Jeanne Sweeney Nelson
Regina Baust O'Donnell
Frances Bilas Spence
Phyllis Martin Upham
Dorothy Platner Way

CLASS OF 1943 (32.4%)

Camelia Gallardo Eisenhart
Helen Tansey Farhat
Betty Lou Froustet
Catherine Austermehle Hrybyk
Aileen Murphy Johnson
Jane Faunce King
Anne Rogers Law*
Mary Blanche McCann
Dorothy Wack McMahan
Louise Sullivan O'Connor
Ave Little Rawdon

CLASS OF 1944 (50%)

Jane Delaney Blank
Margarita Cardus Bohm
Mariagnes O'Neill Brown
Sarah Hodson Connor
Juanita Ripoll Koecher
Marion Yandell Liebert
Mary Gallagher McCarthy
Geraldine Kelly McDonough
Anna Stawitzke Mooney
Lucille Cox Novotny
Dorothea Buchy O'Connor
Patricia O'Malley Pfizenmayer
Dorothy Phinney
Mary Frances Hensler Pié
Mary Lou Fuhrmann Pitman
Katharine Toland Quinn
Ann Robrecht Rhodes
Helen Cunningham Roney
Faith Bonitatibus Willis
Mary Meehan Young

CLASS OF 1945 (25%)

Joan Kiernan Carr
Ann Holloway Charlesworth
Jane Harney Donovan (M)
Margaret Adams Dugan
Mary Catherine O'Brien Fallon (M)
Mary Ann Keegan
Jane MacDermott
Catherine Winter McDonnell
Ann Donohue Metz
Pia Badt Troutman (M)
Alice Tyndall, M.D.
Eleanor Kirk Wilson

CLASS OF 1946 (41.3%)

Anne Locke Bansbach
Anna Marie Hummert Bertram
Gloria Perla Coe
Nancy Curtis Duzy
Joan Haran Gloe
Mary Therese Joyce (M)

Peggy Grant Malone
Marjorie Erickson McDevitt
Margaret Flaherty McFarland
Elizabeth MacFarland McKeown
Rita Squires Meehan (M)
Loretta Brennan O'Brien
Barbara Wilderotter Rinkor (M)
Robertta Pike Semmett
Bernadette Kearns Sigg
Marion Lacey Steet
Mary O'Connor Sweeney
Ethel Thomas Taylor
Joan Kinney Yanni

CLASS OF 1947 (47.7%)

Rita Luczynski Brzezinski
Annette Heitzman Buckley
Eileen Flarity Cummings
E. Loretta Daly
Agnes Dennison Galop
Cecilia McNulty Gray
Anne De Venuto Grey
Marian McCreary Heckerman
Shirley Kieser Hoberg
Patricia Garrity Kasper
Kathryn Kervin
Ellen Logue
Marie Maloney
Muriel Farrell McDonnell
Helene Boffa McGuinn
Barbara Swanson Mooney
Jeanne Grant O'Neill
Eileen Regan Plichta
Marianne Connor Warnick
Mary Alice Dick Zink

CLASS OF 1948 (56.5%)

Mary Jane Dougherty Barry
Jeanne Haesler Bebbington
Antoinette Maselli Belisari (M)
Marie Badecker Benas
Edythe Brownnet
Mary Swingle Buns
Claire Little Burton
Ann Donoghue Conley
Marjorie Piga Crain
Anne Reardon Cummings
Adelaide DiBerardino
Marie DiBerardino, Ph.D.
A. Klair McGlynn Filarsky
Frances McCarron Harper
Mona Hughes Harwood
Eleanor Newell Hofkes
Mary-Jo Heile Hogan
Patricia F. Kelleher
Marcia Kelley
Ellen Richardson Klammer
Catharine Kiely Leydon
Faith Patterson MacDonald
Anne Reilly Mattson, GNSH
Anne Keeler McBride-Manion
Mary Claire O'Keefe McIntyre
Mary Ellen McVeigh
Loretta Moya
Janet Smith Murphy (M)
Catherine Wilson O'Brien
Grace Uttinger Palis
Mary Frances Reilly Rochford
Doris Black Schaefer
Doris Kamp Shaffer
Rita Ayerle Shoemaker (M)

Marguerite D'Auria Szawlewicz
Ruth Hummel Vezzosi
Margaret Schachte Wells
Helen West (M)
Ellen McKernan Williamson

CLASS OF 1949 (48.4%)

Patricia Tully Bannan
Maude Meehan Belli
Margaret Farley Bold
Grace Cavanagh Bolen
Patricia Elder Bonacarti
Doris M. Byrnes
Eileen Casey Cadden
Eugenie Loscalzo Canning
Mary Jane Klinges Carlin
Robertta Rini Cartlidge
Eileen Dowd Clark
Tullia Giordano Conboy (M)
Mary Grace Coleman Crerand
Elizabeth Webb Dixon (M)
Helen Austermehele Dykhoff
Isabel O'Connor Egan
Rita Sokol Eisler
Margaret Kilbride Fausone
Irene Smith Gillespie
Ellen Kiernan Hetzel
Marie Schauder Hindman
Ann Manning Honeycutt
Lillian McBride Jacobs
Kathleen Talbot Jenkins (M)
Dorothea McEvoy Jordan
Kathleen Allen Kehoe
Florence Jurewicz Korzinski
Anna Gene Hurst Madonna
Helen Beatty McBride
Denise Sheehan McGookin
Mary McManus
Joan Dolly Meiklejohn
Marylou Morgan Mullen
Rita O'Loughlin
Lucy Piotrowska, M.D.
Helene Popper
Lorraine Gardner Rogers
Jane McChesney Schubert
Marie Mullen Sciarretta
Theresa Petroski Skiffington
Carolyn Stemmler (M)
Patricia Bushey Stuhr
Joan Loughlin Welch
Jeanne Marx Young

CLASS OF 1950 (55.2%)

Irma Ashenbrenner
Jacqueline Menapace Bolger
Mary Connor Brandt
Barbara MacCausland Clarke
Mary Connolly
Ellen Jane Pariset Crosson
Frances Horan Del Duca, Esq.
Mary Ann Dempsey
Rosemary McGranery Dougherty
Jane Wilson Dunne
Helen Robertshaw Emge
Mary Levin Englebert
Joan McGuigan Evans
Therese Garvey Fox
Elizabeth Meier Greene
Shirlee Repak Gubernat
Anne Marie Moore Halcovage
Berna Schmidt Herrick
Ruth Horcher, M.P.H.

Mary Crecca Kenny
Marie Rosato King
Gerda Steinhauer Koetter
Helen Kurz
Elizabeth U. Laufer, M.D.
Therese Martin Lehigh
Elizabeth Beierschmitt McGee
Blanche Haviland Moore
Helen Kenny Motzenbecker
Joan Byrne Murphy
Dorothy O'Brien
Virginia Mitchell O'Neill
Kathleen Boyle Ortino
Margaret McKernan Pfeifer
Frances Reid
Rosemary Carr Rinehart
M. Eileen Hickey Rogers
Rosemary Campbell Romasco (M)
Sally Quinney Ryan
Charlotte Collins Sears
Patricia Stillmun Shelton
Mary Dunegan Siebert (M)
Janet Piedmonte South
Margaret Weber Sullivan
Marie Hogan Sullivan
Patricia Regan Sullivan
Veronica Petrusky Suppa
Marianne Taulane
Mary O'Connell Truschel (M)
Joan Ritterbeck Venino
Josephine Getman Von Jess
Nancy Dougherty Ward
Ann Meagher Williams
Frances Pickess Woods

CLASS OF 1951 (42.7%)

Bernadette Keeler Abbott
Elizabeth Allen
Bernadette Power Barnhurst
Patricia Whalen Bolger
Catharine Gallagher Brockway
Caryl Brown
Carolyn Baldino Conboy
Mary Mahoney Corini
Winifred Collins Dabroski
Agnes O'Loughlin Danella
Kathleen Gillespie
Patricia Higgins Green
Elizabeth Du Ban Hansen
Barbara Alexander Kegelmeyer
Phyllis Basenfelder Kennedy (M)
Suzanne Gleason Kennedy
Joan Amberg Kineke
Helen Gross King
Joan Fitzpatrick Marvin
Patricia Gavin McCarthy
Micheline Paquet McCracken
Eunice Holley Meyer
Anne Moore
Nancy Schmidt Murphy
Sally Dolly Nester
Ellen Mullany O'Laughlin
Margaret Richardson O'Rourke
Adelaide Brothers Palmer
Bernadette Fortune Pettine
Genevieve Koehler Sweet
M. Regina O'Neill Thomas
Therese Zogby

CLASS OF 1952 (53.8%)

Alice Fitzpatrick Abbene
Lorraine Mariani Albanese

Mary Merz Berko
Louise Bradley (M)
Pura Bigles Brennan
Mary Ellen Carroll Brown (M)
Barbara Carli
Claire Harrison Cocklin
Joan Coyne (M)
Elizabeth A. Croake
Joan Mathers Eaves
Katherine McHugh Enck
Bettyanne Geikler
Mary Alexander Graham
Helen Gruber
Mary Clare Martin Guinther
Faith Olearo Haskew
Louise Burgoyne Kane
Marie McDermott Keeley
Geraldine Menzler Kelsey
Joan Gerard Larkin
Pauline Vinchur Lichman
Joan Schmitt Markham
Louise McCoy
Dolores Sulzbach McDevitt
Elizabeth Meehan
Dorothy Zeller Miller
Anne Duffy Mirsch
Marie Harbina Mockler
Mary Brady Mommessin (M)
Margaret Stehli Morris (M)
Anne Toroni Murdock
Joyce O'Neill
Marita Howard O'Rourke
Laura Hentz Remmey
Joan Murray Reynolds (M)
Betty Ann O'Donnell Richter
Joan Toohey Rochford
Roses O'Leary Stephens
Helen Branagan Thomas
Clara Tucker
Lorene Cardinal Welsh
Joan Dunn Wiseman (M)

CLASS OF 1953 (47.7%)

Rita Ciotti Altman Ed.D.
M. Justine Smith Atkins, D.A.
Marion Morris Bergan
Mona Meehan Boozan
Margaret Smith Braca (M)
Jane McGuckin Buczkowski
Patricia Malloy Cavanaugh
Elaine Burchill Corcoran
Annette Seiler Coyle
Peggy Anne Derham Dolan
Sally Donnelly
Barbara Middlebrook Doyle
Constance Peacock Feraco
Mary Silcox Gleason
Gloria Masey Harkins
Marie Malachowski Heaton, Ph.D.*
Ann Wright Heenehan (M)
Virginia A. Hogan
Marilyn Heitzman Kehoe
Colette Robillard Kelly
Rosanne Bonner Kendra
Alice O'Neill LaPlante
Maureen Reilly Leonhardt
Eileen Connors Linehan
Margaret O'Neill Lipinski
Patricia Wallace MacGillivray
Barbara Piga Marcouiller
Mary Martire
Patricia McDonald

Alison Turnbull Kelley
Mary Grace Grall Killmer
Cecile Heebner Knies
Zenaida Ancheta Krablin
Patricia McAdams Ph.D.
Joanne McFadden McBride
M. Eileen Daly McDonough, Ed.D.
Mary Aldrich Merman
Cynthia Burlick Murphy
Frances McCullen Pierce
Joanne Casacio Regli
Elizabeth Sieburg Richter
Gertrude Carlin Rutledge
Carroll Lanman Schleppe
Janice Maio Schmid
Rosalie Papa Shaw, Ed.D.
Martha Malone Shockey
Katherine Roach Sullivan
Joan Willey Thirion
Elizabeth Tucker Werner
Mary Lou Smith Williams

CLASS OF 1964 (34.7%)

Virginia Pachence Azzariti
Mary Margaret Moore Baker
Pamela Ann Black
Alice Ann Goldkamp Bossow
Evelyn Galla Bratton (M)
Carolyn O'Donnell Consor
Ellen Clearkin Corrigan
Barbara Cruse (M)
Terese Wolf DeCamara
Anne O'Shea Devlin
Diane Neary Ewing
Mary Jane Tynebor Fearn
Regina Bennett Fleming
Dolores Furlan (M)
Paula Murphy Gallagher
Mary Goldschmidt Galloway (M)
Joyce Finnegan Garrison
Judith Kearney Griffith
Marianne Carlson Hall (M)
Georgene Mann Hartmann
Agnes Hendrick
Lois Trench- Hines
Moirra Hurley, M.D.
Margaret Sewell Krivda (M)
Mary Jo Bonner Lubas,
M.D., Ph.D. (M)
Susan Keegan MacDuffie
Julia Koenig Maher
Lorraine Cajano Minecci (M)
Marie Costello Moore
Phyllis Coppola Neill
Carol Neri
Mary Jo Ingham Nolin (M)
Alice Reilly Paduch
Dorothy Palatucci (M)
Denise Murphy Phillips
Eileen Weber Phillips
M. Nancy Burczewski Portland
Eileen Schulz Prior
Amelia Petitti Quaremba, Ph.D. (M)
Margaret Jackson Quinn
Susan Schatz Reed
Sharon Marie Rooney, M.D.
Mary Ellen Scanlan, Ph.D.
Jo-anne Fatibene Semmel
Diana Stango Smoluk
Mary Schuhsler Spangler, Ed.D.
Nancy Connelly Straka
Sally Cavanaugh Strike (M)

Kathleen Olsen Sullivan
Jerilyn Louis Tierney
Mary Ann Costello Yankosky

CLASS OF 1965 (26.4%)

Carol Lowe Ambacher (M)
Maryanne Reilly Andrews (M)
Patricia Chiri Bell
Joan Goldschmidt Browne
Helen Chaykowsky
Denise Belcher Crenshaw
Elaine Bennett Davey
Kathleen Reilly Gallagher (M)
Marie Sclafani Goldkamp
Isabelle Walsh Gundaker
Joan Ellen Obrecht Hathaway
Eileen Hanle Hitchingham, Ph.D.
H. Patricia Hynes
Mildred Bell Kaliss
Elizabeth Newmiller King
Mary Hennessey Krutulis
Marybeth Honeyman Leary
Janice Hughes Ledebur
Bernadette Bennis Marshall
Patricia Jeskey McDermott
Martha Wilderotter McDevitt
Bonnie Vasey McDonald
Kathleen Martin McFadden
Elaine Palmer Meisinger
Elizabeth Wible Molloy, Ph.D.
Sheila Murphey, M.D.
Susan Brown Penrose
Phyllis M. Roche
Connie Bellini Roggio
Regina Maxwell Schuille (M)
Zdanna Krawciw Skalsky
Loretta Canalichio Steinmetz
Donna Harrington Strok
Denise Duckworth Tumelty

CLASS OF 1966 (25.4%)

Regina Mongelli Ammerman
Kathleen Rex Anderson, Ed.D.
Martina McCarthy Ball
Kathleen Donahue Bruyere, USN, Ret.
Nancy Denny Chancler
Karen Urbani Ciliberti
Elizabeth Burns Cusack
Rita Giordano Dedyo
Mary O'Connor Gentile, Ed.D.
Carol-Jane Piltz Guardino (M)
Michelle Sprague Guerard (M)
Erma Fricchione Herr
Sandra Denenberg Hohberger
Julia Heitzman Koechlin (M)
Margaret Marshall Kramer (M)
Helen Quinn Lawlor
Marie Ryan Leonard
Kathryn McFadden MacDonald
Nancy McDonald Mason
Mary Mulderry Mattson
Joan Coletti Metallo
Nonie Glennon Murphy
Mary Delia 'Tye Neuman, Ph.D.
Elaine Miskuff Olson (M)
Bernadette Cosenza Prozzillo
Lorraine A. Revello
Mary Kaufmann Ryan (M)
Mary J. Salzman
Mary Lou Sciarillo
Matilda Cavella Souchak
Christine Eidsness Tantisunthorn
Margaret Seidel Walton

CLASS OF 1967 (26.8%)

Margaret Madden Bell
Mary Pat Gallagher Boyle
Joanne Bonavita Budwick
Frances Gercke Carey
Joanne Paskowsky Carr
Margaret Kress Carson
Anne McDyre Cheney (M)
Catherine Devlin
Linda Taraborrelli Donahue
Kathleen Keirle Dougherty, Ph.D. (M)
Katherine Toland Frith, Ph.D.
Helen Kain Galli
Suzanne Dames Gibbs
Diane Taglialatela Green
Margaret Brabazon Henry
Barbara Jani
Joan McFadden Jernee
Joan Burger King
Patricia Walsh King
Nancy Del Valle Korbeck
Kathleen Herzog Larkin, Esq.
Anne E. Cashman Lilly
Margaret Judge Lynch
Dorothy Kushlis Macfarlane, M.D.
Dorothea Klebacher Magyar (M)
Kathleen Malaney, M.D.
Marian Fanning McNamara, M.D.
Denise Gray Meehan
Margaret C. Moran
Mary Jane Briggs Morgan
Maureen Hennessey Murdock
Jean Brennan Pivetz
Mary Quinn
Kathleen Campbell Schugsta (M)
Margaret DiSanto Storti
Barbara Ann Lopresti Weber
Mary Kunberger Wehrmann
Antoinette Whitmore

CLASS OF 1968 (26.4%)

Rosalie Marinari Akouka, M.D.
Denise Reilly Blasdale
Kathleen Clauss Borkowski (M)
Theresa Elmendorf Carroll
Mary Grimley Cornelius
Mary Beth McKeon Dacey
Faith Peoples Dillon
Molly Walsh Donovan, Ph.D.
Maureen Colleran Doyle
Joyce Maurin Fonash, Ph.D.
Jane Foulkrod Galvin
Maryann Campbell Gans
Judith VanStone Golderer
Kathleen Corcoran Griffith-Keene
Patricia Quinn Hayden (M)
Maureen Burns Heacock (M)
Joan Edmund Husted
Rosa Teresa DiFrancesco Lee
Joan Lunney Ph.D.
Margaret McKee Madison
Rosemary Marino Mangano
Kathleen Engel Marshall
Constance Brown Masciangelo (M)
Maryanna Kane Massey
Ellen Miller (M)
Miriam Berry Moore
Penny Grelis Morrison
Patricia Parrella Orlando
Elizabeth Patterson-Patterson
Joanne Hayes-Rines
Kathleen Long Russell
Maryanne Vallely Wagner
Mary Ann Wischusen, Ph.D.

CLASS OF 1969 (27.7%)

Roberta Romano Acchione (M)
 Carol Dragonetti Avicolti
 Eleanor Yoa Ayers
 Mary Louise Fumo Barton
 Jana DeFrancesco Belansen
 Judith Campbell (M)
 Gioia Cianciosi
 Caroline Horn Cyr
 Joan Fry Donahue
 Madeleine Dupree Dosch, M.D.
 Regina Mellor Dudney
 Nancy Himmer Esposito (M)
 Denise Gervase Ferrier, Ph.D.
 Milrose Lavigna Gallun
 Kathy Fowler Goodyear
 Susan Rapp Halczenko (M)
 Margaret Johnson
 Martha Bender Jollie
 Susan Taylor Kelly
 Anna Gibino Kerr
 Stephanie Comerford Kramer
 Barbara McCabe Ludlam (M)
 Katherine Marschall, M.D.
 Margaret Matthews
 Susan McHugh, Ph.D.
 Regina McKeever
 Kathleen McNicholas, M.D.
 Rita Mulville
 Eileen Walker Phoebus
 Joan Pollitt (M)
 Evelyn Guarnieri Powers
 Katherine Safford Ramus
 Judith Lee Rieder
 Sally Ruttle
 Alice-Marie Donovan Schwenkler
 Johanna Bawduniak Smeller
 Nancy Starecky
 Dorothy Griffith Wiseman
 Teresa Rhodes Wolliard

CLASS OF 1970 (22%)

Marilyn Sutton Adomanis
 Margaret Waltz Baloga
 Felicia Corsaro Barbieri, Ph.D.
 Kathleen Vath Campbell (M)
 Patricia Canning
 Marie Ficca Coyne
 Arlene Amoroso Del Pizzo
 Lydia Maiorca Driscoll (M)
 Barbara Walker Erhard
 Claudia MacFadden Fletcher
 Mary Jane Logue Foelster
 Mary Gallagher (M)
 Helen Hall (M)
 Maria Pugliese-Hieble, M.D. (M)
 Jane Serrada Lang
 Diane Hugues McGinty
 Nadine Morse Noble
 Judith Anne Paul (M)
 Judith Perkins
 Janet Brown Quintal (M)
 Patricia Johnson Skopal
 Diane Stanczak (M)
 Katherine Barrett White

CLASS OF 1971 (22.7%)

Lorraine Aurely (A)
 Clare Hamilton Bohnett
 Bernadette Hynes Borro
 Monica Cetrullo Costlow
 Regina Ventresca Creedon

Suzanne Schulz Dressler
 Judith Flynn Haskell
 Susan Beyer Henschel
 Phyllis Finarelli Kenning
 Ann O'Connor Levering
 Elizabeth Lamb Lillie
 Clare Ammend Magee
 Rita McCloskey Mizioroko
 Catherine Myers
 Geraldine Nuzzo
 Susan M. Pisano
 M. Susan Carr Pontoski
 Frances Rafferty, Esq., Ph.D.
 Barbara Eni Ristaino
 Roberta Rothwell Schillo
 Karen Sherlock
 Joy Supil Siegel
 Ann Marie Smith Sielski
 Frances Skiendzielewski
 M. Terri Frank Terni
 Mary McKenna Thorne
 Kathleen Wall
 Carolann Buchy Wesley
 Mary Kelly Whalen

CLASS OF 1972 (17.1%)

Margaret Helbling Baumann
 Christine Scott Beck
 Sallyann Bowman, M.D.
 Patricia Caldwell
 Elizabeth Conahan
 Caroline Devine (M)
 Anna Faris DiFranco (M)
 Andrea Varricchio-DiVito, Ph.D.
 Margaret Durkin Esq.
 Mary Lynne McCarthy Ekdahl
 Kathryn O'Neill Fisher
 Eleanor MacMahon Frank
 Frances Bonanni Hay
 Kathleen Mooney Hennessey
 Elizabeth Lunney (M)
 Patricia McNichol
 Margery King Roby
 JoAnne Sidoti Schmidt, D.D.S
 Joanne Schmidt, Ph.D.
 Joan Bendinger Soltis
 Margaret Hetzer Stuart
 Kathleen Carlin Weiss

CLASS OF 1973 (18.5%)

Adele Schmitz Bissonette
 Mary Little Collins (M)
 Sally Ann Ayerle Corbley
 Gienda Battistini Daulerio
 Mary Ellen Brady Eck
 Denise O'Neill Fleming
 Kathleen McKeon Graham
 Ana Hulewsky Krysiak
 Jean McWilliams, Ed.D.
 Elizabeth Ryan Meehan
 Barbara Mercer Panek
 Elizabeth Green Perkins
 Patricia Maher Roop
 M. Gervase Rosenberger, Esq.
 Christine Woolston Scenna
 Elizabeth Mayer Strickland
 Patricia Warner Strolle

CLASS OF 1974 (27.1%)

Christine Binkowski Andrews
 Marsha Humphries Boex
 Paula DeSanctis Bonavitacola

Carlota Garcia Colberg
 Janet Powers Dunne
 Margaret M. Englebert
 Joanne Fidler
 Christine Fitzpatrick (M)
 Mary Catherine Fitzsimmons (M)
 Marilyn Pepe Frazier
 Margaret Mascioli Giuntini
 Maureen Clearkin Glanzmann
 Valerie Mikula Hughes, D.D.S
 Elizabeth Mallon Hunter (M)
 Anita Chiu Kan (M)
 Jane Gleason Kenda
 Mary Sher Kenney
 Mary Lenore Gricoski Keszler, M.D.
 Sara Duke Larkin
 Rosemary Leone
 Susan Lyons
 Madelyne Kasper McKee (M)
 Christine Bersheim Morawski
 Mary O'Gorman Murray (M)
 Mary Kinahan- Ockay
 Patricia Harper Petrozza, M.D.
 Patricia Kenney Quinn
 Barbara Alworth Sheridan
 Mary MacAvoy- Strawtitz
 Eden Eisler Sullivan
 Leona Valentine
 Joan Cawley Watson
 Elizabeth Sauter Weber
 Susan Wilderotter
 Anne Guardino Yaccarino

CLASS OF 1975 (18.1%)

Mary Ackroyd
 M. Susan Dougherty Burke, M.D.
 Janine Delaveau Dwyer
 Wanda Feletski
 Kathleen Boran Gotthelf
 Jane Tomalonis Gursky
 Karen Verdi Liuzzi (M)
 Denise Roney McGonigal
 Nancie Ann Kenny Moebius (M)
 Virginia Flynn Morris
 Ngozi Onyewuenyi Oleru, Ph.D.
 Lynne Huddleston-Ruff
 Patricia Kulbitsky Schramm
 Cynthia Strolle (M)
 Regina Williams Tate, Esq. (M)
 Patricia Kane-Vanni, Esq.
 Mary Capece Weinstein
 Angela-Jo Castranova Wetzel
 Carol Voelmle Zennick

CLASS OF 1976 (16.9%)

Sharon Cameron Baldwin
 Mimi Strolle Bender
 Mary E. Brandt, Ph.D.
 Diane Scicchitano Dannenfelser
 Regina Kenny Davenport (M)
 Joanne Fink
 Alida Scarafone Freeman
 Mary Ann Velten Gilman
 Katherine Crosson Hylinski
 Kathleen O'Pella
 Karen Rhodes Platt
 Anne E. Tezak (M)
 Regina Black Urmson
 Anita Haskins Wise (M)

CLASS OF 1977 (12.7%)

Lauren Maria Phillips Brennan
 Cecily Craig
 Elizabeth Crosland
 Alice Ann Gricoski Dachowski, M.D.
 Patti Grossman Deutsch
 Joanne Thomer Facci (M)
 Margaret Carney McCaffery
 Cecelia Englebert Passanza
 Mariann Pokalo, Ph.D.
 Patricia Shustock Scott, O.D. (M)
 Margaret Callaghan Steficek
 Irene Ampthor Tori
 Heyda Baez Toth

CLASS OF 1978 (10.32%)

Mary Conway Arnone
 Ann Curran Brown
 Maria De Luca
 Linda Gringeri
 Cecilia Mohl McAleer
 Mary Prendergast Murray
 Nancy McCarthy Pashley
 Helene Regetta
 Cecilia Cordua Stanton
 Bernardine Hughes Steinmetz
 Bonnie Word, M.D. (M)

CLASS OF 1979 (7.8%)

Mary Augustine
 Barbara McCormack Buonora
 Christina Dougherty, V.M.D.
 Margaret Feraco Frampton
 Theresa Boyle-Miller
 Mary Ann McGill Muller
 Joan Zugay Murphy
 MaryPatricia Walsh
 Christina Demetrovits Woody

CLASS OF 1980 (8.7%)

Jayne Higgins Avery
 Lynne Silverio Carpenter (M)
 Patricia Waldron Gray
 Kathleen Peditto Hendricks, M.D.
 Suzanne Valvardi Lasek
 Doris Cadigan Lefkowitz, Ph.D.
 Barbara Hynes MacIntosh
 Lee Ann Dwyer Mahla
 Susan Corcoran Pigg, Ph.D.
 Michele Fella Przybylowski
 Julia Kittner Wakelee

CLASS OF 1981 (5.1%)

Jeanne Baffa, M.D.
 Elaine Patelunas Copeland
 Piera Infranco Gravenor
 Tracey Dever Simpson
 Genevieve Dagney Sparano
 Jane Randall Conlon-Werner

CLASS OF 1982 (17.7%)

Edithann Bobb
 Theresa Leahy Carlin
 Amy Molloy Cordasco
 Maureen Keashon Dwyer
 Catharine Farnan
 Christina Berenato Giacona
 Ellen Seiberlich Hardy
 Siobhan McEnaney-Hayes
 Marie Hejnosz
 Karen Sworen Hevey (M)
 Catherine Spollen Holt (M)
 Valerie Greco-Hunt, M.D.

Lynnanne Kasarda, M.D.
 Mary Beth Tobin Macaluso
 Lisa Rounds Miles
 Patricia McIntyre O'Connell
 Theresa Smith
 Carol Steinour, Esq.
 Beverley Patrone Uniacke, M.D.
 Joyce Adams-Wert

CLASS OF 1983 (9.8%)

Lynne Birkmeyer
 Gina DiGiuseppe Blum
 Susan Wentland Brobst, Ph.D.
 Anne Dwyer Cyliax
 Debra-Lynn Wolaniuk Dombrowski, O.D.
 Colleen Cleaver Johnson
 Grace Voigt Kozrad (M)
 Patricia Schrader McDonnell, Ph.D. (M)
 Maureen Ginley Vorobec
 Maureen Jaster Whitham
 Alice Mary Connolly Zenner

CLASS OF 1984 (24%)

Kim Suydam Ausman
 Jeanne Koch Buzby
 Maria Fella Cain
 Mary Beth Callan, V.M.D.
 Lynne Brophy Collman
 Lisa Fiorillo den Hamer (M)
 Gillian Horna Dezzutto
 Luz Mercado-Diaz
 Regina Dougherty, SSJ
 Mary Agnew Dunleavy
 Mylene Furey
 Pamela Grossi Hembree
 Joanne Houlahan, Ph.D.
 Y. Trisha Lee Howard
 Elizabeth Poliwoda Jacobson
 Antoinette Scarpone Jones
 Janice Reynolds Kelly
 Phyllis Hartman Kravinsky
 Carrie Wosicki Loveless
 Patricia Klammer Mac Cluen
 Kathleen O'Boyle
 Alison Porter
 Lynda Fennessy Reese
 Tara Flynn Runge
 Patricia Kearns Ryan (M)
 Mary Kay Cleveland Ryder
 Stephanie O'Connell Siegrist, M.D.
 Conchita DiBernardo Smith (M)
 Marianne Shannon Smith
 Maria Rivera Waldman
 Jean Marie Koch Williams

CLASS OF 1985 (14.6%)

Catherine Ard (M)
 Theresa Bagdon-Artis
 Donnamarie Marbet-Eckhardt
 Dorothy Murray Foley
 Joanna M. Furia, Esq.
 Mary Zuccarini Gordon
 Mary Jane Greene
 Natalie Haluszka
 Patricia Heekyun Han-Kim
 Maria Jonas Hobson
 Joann Gallagher Jones, Esq.
 Joanne Sampers Kane
 Laura Teufel Michaelis
 Karen Helverson Schoenborn
 Angela Vance (M)
 Angela Jones Willie

CLASS OF 1986 (14.3%)

Ann McGee Carbon, Esq.
 Anne Bradley De Masi
 Grace Ford Ecclestone
 Mary Clark Hoan
 Maureen McFadden Holley, D.M.D.
 Susan Tolino Melillo
 Donna Talluto Mihelick, M.D.
 Susan Roberts Radomski
 Patricia Reilly

CLASS OF 1987 (14.7%)

Maura Kehoe Davis
 Mary Helen Corr Duet
 Lianne Mikula-Hay, Esq.
 Maria Pié Hughes
 Diane Wasyluk Iardella
 Karen Wilderotter Judge
 Maureen McGlynn Koerwer
 Carla Tomassi Marrone
 Kathleen Shea Pié
 Beth Griech- Polelle, Ph.D.
 Catherine Tucci Roberts
 Kathleen Prihoda Schwartz (M)
 Lynn Mulvaney Sharp
 Joan Taylor
 Marianne McGurk Wallaesa (D)

CLASS OF 1988 (9%)

Elizabeth Albertoli Becker (M)
 Sandra Clements Greene
 Kathleen Quigley Grimm
 Karen Murphy Harris
 Marybeth Eskesen Pavlik
 M. Victoria Sharkey-Rossi
 Beth Davey Rosso (M)
 Katherine McGowan Timoney

CLASS OF 1989 (16.4%)

Michelle Raymond Bray (M)
 Caroline Reilly Dignan, M.D.
 Susan Katz
 Alice Campbell Krepto
 Letitia Pukas McNeil
 Michele Petrucci
 Marjorie Scott
 Mary Sylvester Thompson
 Audra Meckler Wallis
 Susan Monaghan Williams
 Catherine Senger Zarrelli

CLASS OF 1990 (8.3%)

Kristin J. Broderick Bremer
 Michele L. Ferrara Cutler
 Brenda M. Gala DeStefano
 Kristin Durski Gartner
 Susan M. Rilling Haitsh
 Lara L. Doyle Iannetta
 Lynn Marie Boccella Kulak
 Jennifer A. Eager Scalaro

CLASS OF 1991 (8.4%)

Jessica Flattery Cole (M)
 Concetta Giuliano, D.O.
 Kelly Baisley Jenkins (M)
 Kristin MacDonald King
 Gretchen Ann Reilly
 Megan Schumacher
 Wendy M. Defibaugh Yu

CLASS OF 1992 (7.6%)

Catherine Lockyer Bitting (D)
 Maria Santoro Conway
 Nancy Burton DellaVecchia
 Kerry Gans
 Joelle Zveitel Lesniak
 Kathleen McKenna Pestich
 Andrea Pasquarello Peterson

CLASS OF 1993 (2.2%)

Denise Castro
 Susan Pagliaro Clark

CLASS OF 1994 (8.1%)

Amy McLeer Frangione (M)
 Kerry Freisen Lively
 Nicole Gemborys McGurin
 Bridget Hill Panza
 Pamela Fiugalski-Prevoznik
 Jodie King Smith
 Sabine Angersbach-Torres

CLASS OF 1995 (7.6%)

Andrea Capozzi Brecker
 Dianne McCullough Christopher
 Erin Clarke
 Jennifer Kennedy Dombrowski
 Kerry Blythe Hananouchi
 Karen Kurtz
 Joanne Martinez
 Yumiko Wakabayashi

CLASS OF 1996 (4.2%)

Karin Stangler Murphy
 Abigail Palko
 Joy Nelson Phillips
 Jennifer McNulty Styles

CLASS OF 1997 (7.6%)

Nicole Irwin Blum
 Debra Washington Hathorn
 Michelle Leshko Kaschak
 Ann Keer
 Bridget Mahon (M)
 Joy Malaty
 Erin Whelan McCann
 Anne-Marie Gormley Reber

CLASS OF 1998 (6.6%)

Rieke Baize
 Jessica Bowman Dodson
 Megan Gallagher
 Rachel Ray Petyk
 Lauren Ann Moffatt Rossi

CLASS OF 1999 (4.2%)

Andrea DeSantis
 Manali Mody
 Monica Voglewede

CLASS OF 2000 (1.4%)

Alyce Taylor

CLASS OF 2001 (2.5%)

Christine McCrane
 Annie Sampson

CLASS OF 2003 (3.9%)

Coleen Molony Haldis
 Anna O'Conor
 Donna Dukes Podolsky

SCHOOL OF CONTINUING STUDIES

Dorothy Putnam-Baker '92
 Jennifer M. Schaeffer Bakker '90
 Hannelore Lawin Barbieri '93
 Mary Cannon Bassetti '95
 Melvin Benson, III '03
 Carol Fetterman Blauth '78
 Mary Jo Bucceri '98 (M)
 Ruth Carver '88
 Cheryl Chisom Collier '85
 Joan Murray Conmy '91 (SGS) '98 (M)
 Barbara Ambrose Curtis '94
 Melissa D'Amelio '97
 MaryLou Mongiven Delizia '78 (M)
 Denise DeLuca '99
 Jane Wagner DeSilverio '93
 Deborah Matis Donnelly '96
 Dineen Foley Filoramo '00
 Mary Johnson FitzPatrick '73
 Donna Bongarzone-Fluehr '03
 Saori Fujiyama '95
 Kathleen Gibson '02
 Bonnie Fortin Graf '99
 Gilda Caruso Gregori '01
 Althea Hatchell Harris '99
 Marjan Dareshuri Holbrook '02
 Esther Ford Houston '87 (SGS) '90
 Elizabeth Cornell Huston '85 (SGS) '91
 Marcia Moore Jones '92
 Diane Kingsley '87
 Debra Gebhardt Klein '03
 Karen Korman '91 (SGS) '93
 Patricia Rowe Laurenzi '89
 Frances Lutz '98
 Mary Moran Mahal '87 (S)
 Maureen Rykowski McCarthy '02
 Teresa McClain '01
 Dolores Hoke McCullough '00
 Maureen McGurk '89
 Brian McKenna '03
 Loretta McLaughlin '74
 Carolyn Sagendorph Montgomery '97
 Mary Elizabeth Ounsworth '92
 Angeline Freeman Payne '99
 Christine Westrum Porter '94
 Catherine Quinn '78 (S)
 Mary Jane Reilly '94
 Maryellen Lawlor Robertson '73
 Jane Schoeniger '00
 Lillian Carpenter Scoggins '95
 Elizabeth Shober '96
 Catherine Simon '85
 Arthur Smith '01
 Karen O'Neill Spencer '85
 Jean Stotter '73
 Susan Matlack Troemel '87
 Lori White '03
 Gertrude Williams '98

SCHOOL OF GRADUATE STUDIES

Elise Artelt '95
 Betty Bolling '91
 Elaine Bradshaw '83
 Maureen Clemens Brown '97
 Nancy Benner Brubaker '00
 Janet Mora Caputo '00
 Denise J. Monaghan Carles '90
 Kathleen Aquino Cleaver '00
 Jill Starr Cott '93
 Mary Rose Cunningham '93
 Patricia Byrne Devine '87
 Tamra L. Dietrich '90

Geraldine Stock DiLisi '92
 Mary Ann Opp Domanska '03
 Suzanne Donovan, Ed.D. '91
 Valerie DeFelice Downing '95
 Karen Dupre '85
 Michele DiPasquale Elkes '02
 Wandrea Freeman '02
 Dennis George '99
 Catherine Griffiths Harrison '98
 Claire Hawkins '93
 Marie Hegarty '99
 Belinda Horn Heidenreich '00
 Gloria Hodgert '91
 Mary Lou Weaver Houser '01
 Elizabeth Iaquinto '85
 Elisabeth Steuble-Johnson '98
 Laura Juelke '96
 Lauren Topps Malora '87
 Dawn Vitello-Mangan '99
 Regina Keeris McCrea '89
 Grace McGuirl '87
 Mary Charles McNally '85
 Bryan Michaels '01
 Sandra K. Moore '90
 Erica Olin Nelson '93
 Christine Nydick '94 (S)
 Leslie Wells O'Malley '95
 Shirley Ormes '01
 Arlene Prentice '92
 Francis Reynolds '94
 Catherine Murtha Rudolph '01
 Susan Schoenberger '01
 Barbara Spaeth '93
 Fred Straus '91
 Lauren VanPelt '97
 Suzanne Venezia '03
 Betty Kroupa Wells '95
 Deborah Chan Williams '91

PARENTS & FRIENDS

Anonymous
 Mr. & Mrs. James Ard
 Ms. Elaine Baer
 Mr. & Mrs. William Bant
 Mr. & Mrs. Simon Belli
 Mrs. Columbina Bonanni
 Charles Boris
 Karl Bortnick
 Capt. & Mrs. Aubrey Bourgeois
 Dr. Elizabeth M. Bowden
 Mr. & Mrs. Earnest Boyd
 Mr. & Mrs. William T. Brennan
 Ms. Betty Buckley
 Mr. & Mrs. James Cavalieri
 Mr. & Mrs. James Chapman
 Mr. & Mrs. John R. Cochran, III
 David Cohen, Esq.
 Mr. & Mrs. John Collins
 Dominic Cotugno, Ed.D. (F)
 Mr. & Mrs. Ronald Cunningham
 Pam Cyr
 Frank Davey (D)
 Mr. and Mrs. Oliver Davies, Sr.
 Donald de Castro
 Mrs. James Deegan
 Mary Anne Delaney, M.D.
 Mrs. Ivette DeLong
 Joseph P. Denny (D)
 Mr. & Mrs. Nicholas DiMuro
 Mr. & Mrs. John Doody
 Ms. Martha Drusedunm
 Mr. & Mrs. Francis J. Dunleavy (M) (D)

John Durmala
Mr. & Mrs. Timothy English
Estate of Francis V. Flynn
John Farkas
Mr. & Mrs. John Faustman
William Finley
Ms. Teresa Fry
William Fynes, Jr.
James Gallagher
Stephen Gardner (D)
Robert Glackin (M)
Mrs. Irene Grady
Ms. Julia Graham
Mr. & Mrs. Daniel Greisbach
Mr. & Mrs. John Hardiman
Raymond Hartman, Jr.
Nan Hechenberger, Ph.D. (D)
Donald Heron
Mr. & Mrs. James Herron
Alfred Holm (M)
Mrs. Quita W. Horan
Jane M. Hughes
Dr. & Mrs. Jesus Janchez
Mrs. Agnes Kelly
Dr. Alan Kelly
Mr. & Mrs. Gregg Larkin
Mr. & Mrs. Joseph Lennon
H. Paul Lewis and Lydia Lewis
Ms. Lynda Lewis
Mr. & Mrs. Robert Lockyer
Ms. Stella Lukiewski
Thomas Lynch
Ms. Patricia Lyons
Dr. & Mrs. Hubert MacDonald
Gregory Magarity, Esq.
Mr. Anthony Maglio, Jr.
Mr. & Mrs. Alan Maher
Mr. & Mrs. Carl Malisheski
Kristin Marcussen, D.C.
Mrs. Cecelia Marino
Ms. Lynn Matthews
Mr. & Mrs. William McCafferty
Mrs. David McCaig
W. B. McCullough, III
Mr. & Mrs. John McEwan
John McGill, Jr.
Gerald McGinley
Mr. & Mrs. Francis McIntyre, Jr.
Mrs. Lois McKenna
Bernard J. McLafferty
John McNelis
Mrs. Dorothy Meehan-Ripa
Ms. Katherine Mezzanotte
Mr. & Mrs. Donald Miller
Robert Miller (M)
Mr. & Mrs. William Moscola
Mr. & Mrs. Rowland Myers (M)
Robert O'Donnell
Mr. Shaun O'Malley (M)
Ms. Lucilia Osihias
Mr. & Mrs. William Page
Mr. & Mrs. John Palko
Mr. & Mrs. Robert Paul
Mr. & Mrs. James Perrelli
Mr. & Mrs. James Pillsbury
Mr. & Mrs. Thomas Player
Ms. Ida Plotener-Yiannios
Mr. and Mrs. John D. Plunkett (M)
Mr. & Mrs. Anthony J. Polidora
Mr. & Mrs. Carroll Quade
Mr. & Mrs. Joseph Quinn

Mr. & Mrs. Richard Radtke
Mr. & Mrs. Bernard Rafferty (M)
Mr. & Mrs. James Ray
Kevin Reddington
Miss Joanna Renzi
Mrs. Mary Ann Restall
Catherine Robinson, SSJ (D)
Barbara Spiro Ryan (D)
John Sabia, Jr. (D)
Mary T. (Molly) Sabia
Mr. & Mrs. Edward Schmidt
Mr. & Mrs. David Schreffler
Mr. & Mrs. Thomas Schriver
Mr. William Seiberlich (M)
Mr. & Mrs. Terence Shea (M)
Ms. Nadya K. Shmavonian (D)
Leonard Siegel
Mr. & Mrs. Frank Sliker
Mrs. Eugene Smith
Mr. & Mrs. John Stankard
Mr. & Mrs. Robert Stanton (M)
Mr. & Mrs. J. Clark Steinman
Mr. & Mrs. Robert Sucharski
Mark Sutton
Louis Taddei
Mr. & Mrs. Stephen Tamburo, Sr.
Robert Teufel (D)
Mr. & Mrs. John C. Tuck
Mr. & Mrs. John Voglewede
Mr. & Mrs. Paul von Zech
John Walker
Ignatius Wang (D)
Mr. & Mrs. Raymond Wildermuth
Ms. Mary Yauch
Mr. & Mrs. Donald Yusko
Ronald Zemnick (D)
Mrs. Margaret Zenner

MATCHING GIFT COMPANIES

AEGON
Air Products & Chemical, Inc.
American Electric & Power
American Home Products, Corp.
Anheuser-Busch Companies, Inc.
AON Corporation
Astra Merck
AT&T
Bristol-Myers Squibb Co.
The Chase Manhattan Bank, N.A.
Chevron, USA, Inc.
CIGNA Corporation
Colgate Palmolive Company
Dow Jones & Co., Inc.
FleetBoston Financial Foundation
First Union Corporation
General Electric Foundation
Glaxo SmithKline
The Harleysville Insurance Co.
The HCA Foundation
HCR Manor Care
Hewlett Packard
IBM Corporation
IMS Health
J. P. Morgan Chase Foundation
Johnson & Johnson
Knight-Ridder, Inc.
Land Americe Foundation
Lockheed Martin Corporation
Lucent Technologies
Mellon Bank Corporation
Merck & Company, Inc.
Minnesota Mining & Manufacturing

Pennsylvania Power & Light
Pfizer, Inc.
Procter & Gamble Company
Provident Mutual Life Insurance Co.
Prudential Insurance Co. of America
Quaker Chemical
Reebok Human Rights Foundation
Rohm & Haas Company
TRW Inc.
Sain-Goban Corporation
Shell Oil Company
SPS Technologies
Sterling Winthrop, Inc.
Summit Bank
Sun Microsystems Foundation
Texaco, Inc.
The Times Mirror
Towers Perrin Forster & Crosby
Tyco Electronics Corporation
United Technologies Corporation
The Vanguard Group
Verizon Foundation
Walt Disney Company Foundation
Wells Fargo Bank, NA

BUSINESS, INDUSTRY & FOUNDATIONS

Alcan Aluminum Corporation
Alliance Bank
Alpha Sigma Lambda
ARAMARK
The Arthur Jackson Company
Automotive Refinish Service Co.
Barbin & O'Connell
Beneficial Savings Bank
Bevilacqua Plumbing, Inc.
Brucker & Whitacre Corporation
Bruno's Restaurant
Chartwells College & University Dining Services, Inc.
Chestnut Hill Dental Group
Commerce Insurance Services, Inc.
Crown Cork & Seal Company, Inc.
CYMA Builders & Construction Managers, Inc.
Deloitte & Touche, LLP
Donohie Memorial Education Fund
Duane Morris, LLP
Elko & Associates, Ltd.
Elks Grand Lodge
Environmental Management Group, Inc.
First Keystone Federal Savings Bank
First Presidential Company
Garrison Printing Co., Inc.
Glackin Thomas Panzak, Inc.
Herman Goldner Company, Inc.
Grand Lodge Master Shrine
The Gulati Family Foundation Trust
Hann Financial Service Corp.
Lynne Honickman Foundation
HOT NAILS
IDC Centre
Independence Blue Cross
J.O.B. Design & Construction Co., Inc.
Jansen Tree Experts
Keough Electric, Inc.
Landscape Architecture
The Christian R. and Mary F. Lindback Foundation
Louis A. Itarola Realty Appraisal Group, Ltd.
Magarity Dealerships, Inc.

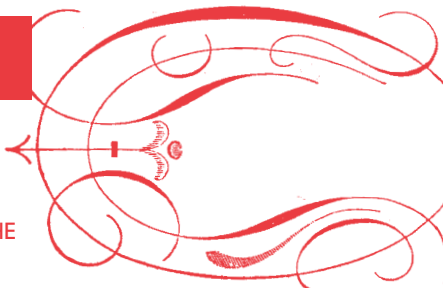
Samuel P. Mandell Foundation
 The Martin Foundation
 Rocco & Barbara Martino Foundation
 Francis E. McGill, Realtor
 The Montgomery Benefits Group
 The Morning Call
 National Collegiate Athletic Association
 The Navesink Foundation
 The Outsourcing Partnership, LLC
 P. Agnes, Inc.
 The Philadelphia Contributionship
 Philadelphia Trust Company
 Rainer & Company
 The John C. & Kathryn S. Redmond
 Foundation
 RMB Roxborough Manayunk Bank
 Rodgers Realty Advisors
 Bill & Trudy Rutledge Foundation
 The Mary L. Ryan & Arthur P. Ryan,
 III Family Fund
 D. M. Sabia & Co., Inc.
 Salomon, Smith, Barney, Inc.
 SBC Telecommunications, Inc.
 Schock's Sunoco
 SCT Software & Resource
 Management Corp.
 Searchtec Holding, Inc.
 Sloane Toyota, Inc.
 Smart & Associates, LLP
 The W. W. Smith Charitable Trust
 Harold and Ann Sorgenti Family
 Foundation
 Sovereign Bank
 Starboard Capital Markets LLC
 Stradley Ronon Stevens & Young, LLP
 Thomas Wynne Apartments
 & Jericho Manor Apartments
 Trans Union, LLC
 Tri-State Telecommunications, Inc.
 Turner Construction Company, Inc.
 We-Enroll Incorporated
 Weaver & Reckner Dental Associates
 Williard, Inc.
 1600over90

GIFTS-IN-KIND

Catherine Lockyer Bitting '92 (D)
 Marie Conn, Ph.D. (F)
 Rabbi Jon E. Cutler
 Harold J. Fine, Ph.D.
 Josh Ocka, Globenet
 Bruce E. Honer
 Mary K. Kenny '61
 Keri Kohler '03 & Kim Griffin '02,
 Color Me Mine, Chestnut Hill
 Mary Mahal
 Patricia Gallo Terrenzio '79
 Rich and Mary Ann Stahl Patton '87
 Dr. David Remy
 Barbara Rice
 Trudy Carlin Rutledge '63
 William Wadlinger (S)
 Margaret Zenner

TRIBUTE FUND

**DURING THE FISCAL YEAR 2003-
 2004, CHESTNUT HILL COLLEGE
 RECEIVED CONTRIBUTIONS IN
 HONOR OF OR IN MEMORY OF THE
 FOLLOWING INDIVIDUALS.**

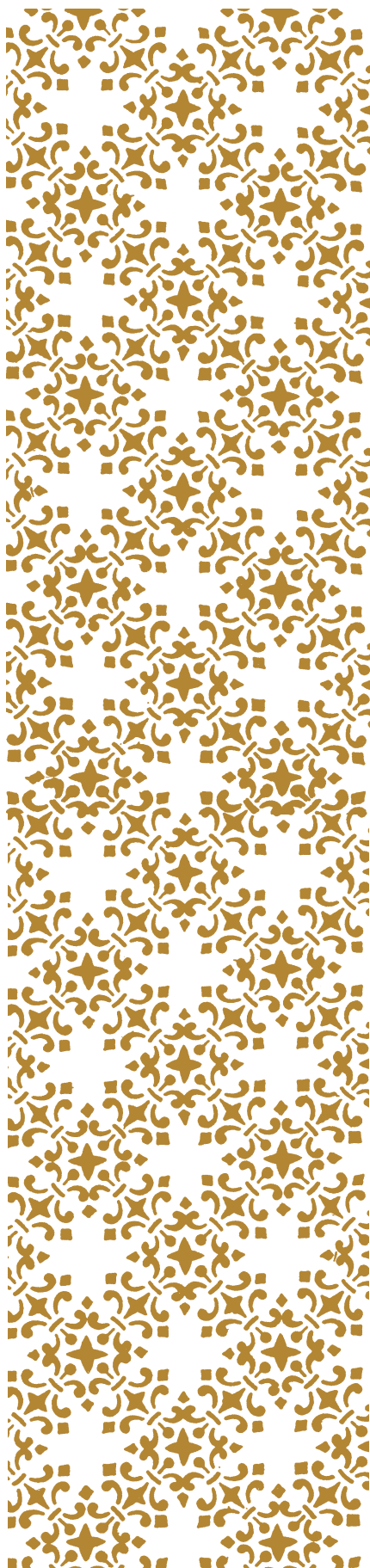


IN HONOR OF

Ann Edward Bennis, SSJ
 Class of 1969
 Marie Conn, Ph.D.
 Diane Driscoll, SSJ '63
 Mary Helen Kashuba, SSJ '55
 Mary Jo Larkin, SSJ
 Anne McBride
 Mr. & Mrs. Lawrence Pavlinko
 Pierre Marie, SSJ
 Dino Luciano Putnam
 Carolyn Stemmler '49

IN MEMORY OF

Anita & Marvin Butler
 RoseMarie Branca
 Mary Breslin '55
 Marion Conner
 Sue Kaufman Codd '67
 Antoinette Damajjanac
 Nancy Darrah
 George DiRienzi
 Fitzgerald & Dunsworth Families
 Harriet Fitzpatrick '38
 Patrick Marie Flood, SSJ
 Frances C. Frank
 Mary Gallagher
 Marie Malachowski Heaton, Ph.D. '53
 Dorothy Hennessey, SSJ
 Mary Hoffman
 Mary Friel Howard '51
 Marie Reinhart Jones '47
 Mary Jordab, SSJ
 Virginia Keeler '53
 Johnna Lyons '90
 Eva Maria Lynch, SSJ
 Annie Maglio
 Marino & Mosciatti Families
 Lillian Teresa McClain, SSJ
 Catherine McDonald, SSJ
 Mr. & Mrs. Charles McFadden
 Mary & John McNelis
 Dorothy Miller
 Dolores Arnade Morin '35
 Jeanne Clements Neville '40
 Dominic Nocito
 Mary Parente
 John Sabia, Sr.
 Elizabeth O'Neill Sparks '43
 Roseanita Sullivan '50
 Eleanor Taubman
 Lorraine Guiseppi Tobia '65
 Fred Tucci
 Helen Farren Walsh '33



CHESTNUT HILL COLLEGE BOARD OF DIRECTORS 2003-2004

CHAIR

Patricia Kelly, SSJ
Superior General
Sisters of St. Joseph of Philadelphia

VICE CHAIR

Joseph P. Denny
Vice Chairman
Liberty Property Trust

PRESIDENT

Carol Jean Vale, SSJ, Ph.D.

DIRECTORS

Mary Barrar, SSJ
Member General Council
Sisters of St. Joseph of Philadelphia

Catherine Lockyer Bitting '92
Project Manager
Thomas Wynne, L.P.

Judith E. Campbell '69
Senior Vice President and Chief
Information Officer
New York Life Insurance Company

Frank L. Davey
Vice President
John Evans' Sons, Inc.

Stephen Gardner
Partner
Deloitte & Touche, LLP

Nan Hechenberger, Ph.D.
Consultant
Cassidy & Associates

Marjorie Keenan, SSJ
Vice Principal
Bethlehem Catholic High School

Alan M. Kelly
The Gilbert S. Kahn Dean of
Veterinary Medicine
University of Pennsylvania

Miriam Gibbons Mandell '61
M.G.M. Consulting Company

Barbara D'Iorio Martino '60



Anne P. Myers, SSJ, Ph.D.
Member General Council
Sisters of St. Joseph of Philadelphia

Judith Oliver, SSJ
Coordinator of Ministry
Sisters of St. Joseph of Philadelphia

Lois B. Pope, LL.D.
President
The Lois Pope LIFE Foundation

Catherine Robinson, SSJ
President
Archbishop Prendergast High School

Anne Marie Roche, SSJ
Coordinator for Mission Effectiveness
Sisters of St. Joseph of Philadelphia

Barbara Spiro Ryan
Senior Vice President for
Institutional Advancement
Drexel University

Marilyn Ryan, SSJ, Ph.D.
Member General Council
Sisters of St. Joseph of Philadelphia

John Sabia, Jr.
President
D.M. Sabia & Company

Alma Rose Schlosser, SSJ
President
Saint Hubert Catholic High School for Girls

Anna Louise Schuck, SSJ
Member General Council
Sisters of St. Joseph of Philadelphia

Nadya K. Shmavonian
Independent Consultant

Ann Rusnack Sorgenti '58

Christophe Terlizzi
Executive Vice President of Commercial
Real Estate
Citizens Bank

Robert J. Teufel
Chairman (retired)
Rodale Press, Inc.

Marianne McGurk Wallaesa '87
School Psychologist

Ignatius Wang
President
Urban Consultants, Inc.

Ronald Zemnack
Senior Vice President
Williard, Inc.

CHESTNUT HILL COLLEGE ALUMNAE/ ASSOCIATION BOARD OF DIRECTORS 2003-2004

PRESIDENT

Regina Maxwell Schwille '65

PRESIDENT-ELECT

Suzanne Schulz Dressler '71

VICE PRESIDENT

Kathleen Quigley Grimm '88

SECRETARY

Kathleen Shea Pié '87

PAST PRESIDENT

Michelle Schlindwein Pulcinella '91

DIRECTORS

Regina Ventresca Creedon '71

Mary Levin Englebert '50

Amy McLeer Frangione '94

Joanne Fink '76

Mary Ann Keegan '45

Catherine Hebson McVicker, Ph.D. '65

Kathleen O'Boyle '84

Mary Ann Stahl Patton '87

Pamela Fiugalski-Prevoznik '94

Annie Sampson '01

Maria Stranieri '79

Regina Black Urmsen '76

Angela Jones Willie '85

WAYS OF GIVING

SUPPORTING CHESTNUT HILL COLLEGE

There are several Payment Plan Options available for those who wish to make a contribution to Chestnut Hill College.

CASH

May be given for any purpose.

CHECK OR MONEY ORDER

Made payable to Chestnut Hill College.

CREDIT CARD

VISA, MasterCard, or Discover charge service available.

APPRECIATED MARKETABLE SECURITIES

May be given for any purpose via electronic transfer or by re-registering the shares in the name of Chestnut Hill College. To avoid paying any capital gains tax, you should give the shares directly to the College. The income tax deduction is based upon the value of the shares at the time they are given to the College.

Life Insurance Policies, Real Estate, Appreciated Property, Closely Held Stock, other holdings may be given based upon their evaluation and acceptance by the College.

BEQUESTS

Continue the tradition. Help ensure a Chestnut Hill College education for future generations by remembering the College as a beneficiary in your Will. The College may be named as the recipient of a specific amount or be designated to receive a percentage of the estate.

WIRE TRANSFER

Funds or gifts of securities may be transferred directly to the College's account.

Contributions may be sent to:
Chestnut Hill College
Office of Institutional Advancement
9601 Germantown Avenue
Philadelphia, PA 19118

Chestnut Hill College is a tax-exempt charity, acknowledged by the Internal Revenue Service as rating a 501 (C) (3) status. All contributions to Chestnut Hill College are fully tax deductible.

For assistance with any of the above Payment Plan Options, or to discuss, in confidence, specific opportunities for providing support, you may contact:

Lorraine Aurely, Vice President of Institutional Advancement, at 215.248.7103, or e-mail: aurelyl@chc.edu or Catherine Quinn, Director of Development, at 215.248.7137, or e-mail: quinnc@chc.edu

CONTRIBUTORS

Kathleen M. Spigelmyer '98
Editor
215.248.7025
spigelmyerk@chc.edu

Lorraine Aurely '71
Vice President of Institutional Advancement
215.248.7103
aurelyl@chc.edu

Grace Corr Haenn '54
Director of Alumnae/i Affairs
215.248.7144
ghaenn@chc.edu

Catherine E. Quinn '78
Director of Development
215.248.7137
quinnc@chc.edu

Jim Roesé
Contributing Photographer

Founded in 1924 by the Sisters of Saint Joseph, Chestnut Hill College is a four-year coed Catholic college offering a traditional liberal arts undergraduate program, as well as accelerated undergraduate degrees, master's and doctoral programs. Since its inception, the College has offered a rigorous curriculum that provides students with a broad background in the humanities, social sciences and natural sciences. The goal of Chestnut Hill College has been to prepare students for life's challenges by helping them to grow intellectually, spiritually, emotionally, and socially. The College is an equal opportunity employer that recruits, advertises and hires without regard to race, creed, color, national origin, age or sex. Reprinting any material herein requires written consent of the College.

The editor of this report makes every effort to include accurate information. Comments, questions, concerns, and opinions are welcome in the form of letters to the editor. Please include your full name, address, phone number and class year. Address all correspondence to:

Editor
Chestnut Hill College Annual Report

Chestnut Hill College
9601 Germantown Avenue
Philadelphia, PA 19118
E-mail to: spigelmyerk@chc.edu

The information in this report recognizes gifts received from July 1, 2003 through June 30, 2004.





**CHESTNUT
HILL
COLLEGE**

9601 Germantown Avenue
Philadelphia, PA 19118
215.248.7001
www.chc.edu

Non-Profit Org.
U.S. Postage
PAID
Permit No. 14
Flourtown, PA