

Office of Vocational Rehabilitation

CHC Neurodiversity Symposium
March 16, 2023

Overview of OVR

Review of services and background information

To assist Pennsylvanians with **disabilities**
to secure and maintain
employment and independence.



Agency Structure



Commonwealth of Pennsylvania (CWOPA)

Department of Labor and Industry (L&I)

Bureau of Vocational
Rehabilitation Services
(BVRs)

15 District Offices

Bureau of Blindness
and Visual Services
(BBVS)

6 District Offices

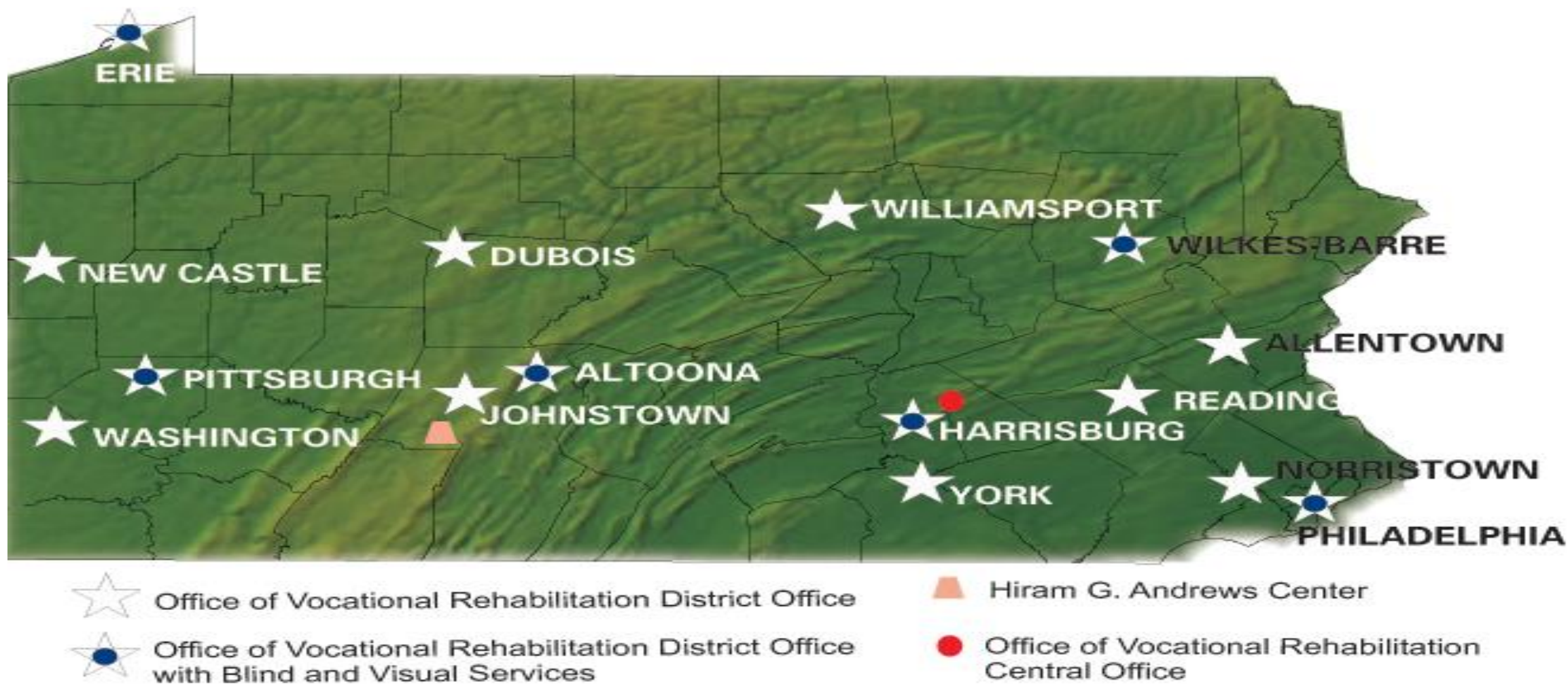
Hiram G. Andrews
Center (HGAC)

Johnstown, PA

Bureau of Central
Operations

Harrisburg, PA

OVR District Offices (Map)



Who We Serve

Review of OVR's Eligibility Criteria

- OVR serves PA residents, with disabilities that present a substantial impediment to their employment.
 - A person's disability could be cognitive, physical, emotional, psychological, or learning.
 - A disability, for OVR's eligibility criteria purposes, is different than a barrier to employment which may include homelessness, teen pregnancy or parenting, criminal background.
- Our customers must be willing and able to work.

Pre-Employment Transition Services (Pre-ETS)	Vocational Rehabilitation Services
<ul style="list-style-type: none">• Students between the ages of 14-22.*• Enrolled in secondary or post-secondary education.	<ul style="list-style-type: none">• Beginning no later than 2 years prior to the student graduating high school.• Services for adults as well.• BBVS

Pre-Employment Transition Services (Pre-ETS)

Review of Pre-ETS services

[Click here for more information on Pre-ETS!](#)

Pre-ETS help students with disabilities learn about themselves, understand work requirements, practice work skills, choose a career, and explore training options.



Pre-ETS are for students:

- Between the ages of 14-22*
- Enrolled in secondary or post-secondary education
- Have an IEP, 504 Plan, or identify themselves as a student with a disability
- Completed the Pre-ETS Release Form

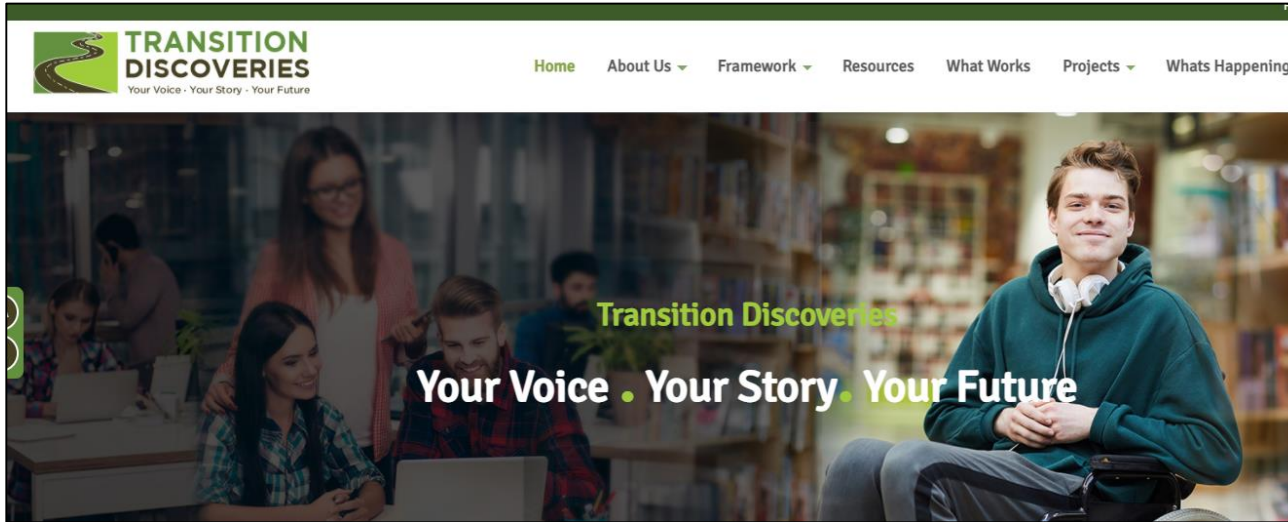
*22 years old for this school year (Act 66)

What are Pre-Employment Transition Services?

Self-Advocacy Instruction
Counseling On Postsecondary Options
Job Exploration Counseling
Work Based Learning
Workplace Readiness Training

*Additionally, OVR can attend IEP Meetings and Outreach Events!

Helpful Websites

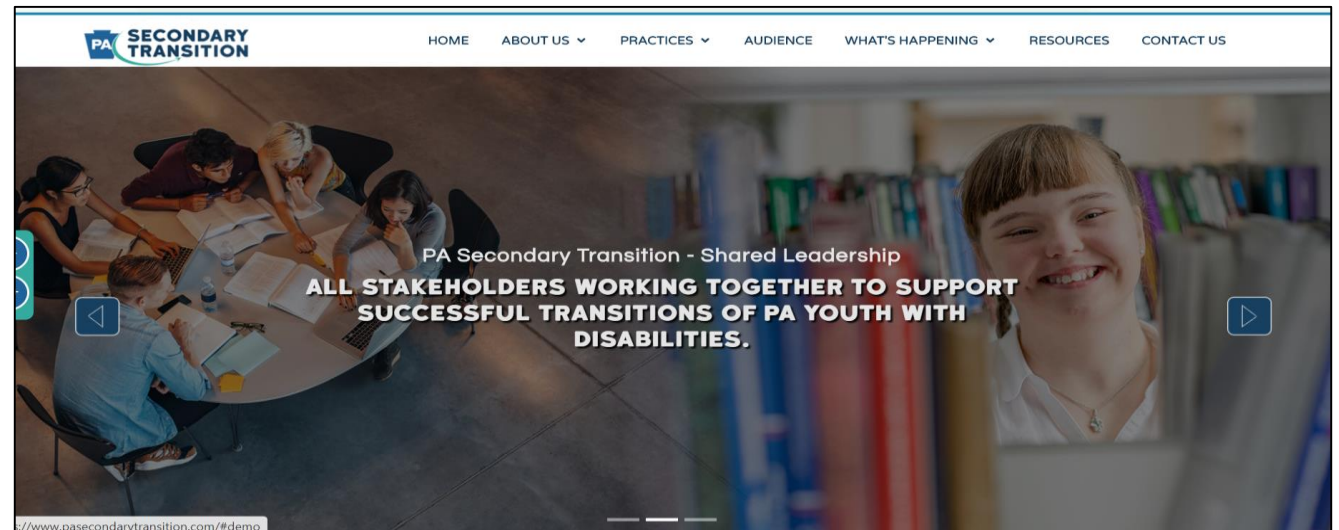


Transition Discoveries website
for Youth and Families:

<https://www.transitiondiscoveries.org/>

PA Secondary Transition website
for Professionals:

<https://www.pasecondarytransition.com/>



VR Services

Review of VR services

Vocational Rehabilitation Services

- Early Reach Initiative
- Pre-Employment Transition Services
- Diagnostic Services
- Vocational Evaluation
- Counseling and Guidance
- Transition Services
- Restoration Services
- Training Services
- Vehicle/Home Modification
- Business Services

Blindness and Visual Services

- Blindness Skills Training
- Instruction: Mobility
- Instruction: Daily Living
- Independent Living Skills
- Specialized Children's Services
- Randolph-Sheppard Business Enterprise Program (BEP)

- Early Reach Coordinator
- Vocational Rehabilitation(VR) Supervisor
- VR Counselor
- Business Services Counselors
- Business Services Representatives (Employment Facilitator)



- Vocational Rehabilitation(VR) Supervisor
- VR Counselor
- Social Worker
- Orientation and Mobility Specialist
- Vision Rehabilitation Therapist



Post-Secondary Education Services

Review of post-secondary services

- It is OVR's policy to provide for the reasonable financial support of customers in their attendance at colleges and universities.
- Costs allowable for consideration of support include tuition, fees, books, supplies, room and board, and transportation.



- **College/University** – any program offered by an accredited college or university that results in the awarding of an associate's, bachelor's, master's, doctoral, law or medical degree.
- **Business Trade or Technical (BTT)** – any program offered in the facilities approved by the Dept. of Ed or Dept. of State that results in the awarding of a certificate, diploma or associate degree. This includes Comprehensive Transition Programs.
- **Non-Traditional Training** – includes correspondence, distance learning/online, or other traditional methods of training.

- Assist students in making a seamless transition through postsecondary education, to obtaining a college degree, and seeking competitive integrated employment.
- Provide an additional layer of support for students throughout their academic career.
- Address areas of academic and social competency, self-advocacy, interpersonal skills, independent living skills, communication, problem solving, time management and executive functioning skills.



OVR's Application

How to apply for OVR services

To apply for VR services, please complete the online referral form:

www.pacareerlink.pa.gov



- Once the home page opens scroll down to “Let’s Get You To The Right Place” & select “I am an Individual”
- Then click on “Individuals with Disabilities”
- Scroll down to “Join In” and click “Register Now”
- Select “Individual Seeking OVR Services”
- Complete the OVR Referral Form and submit
- Contact your [local OVR office](#) if assistance is needed in completion

Questions?



Kaitlin Salvati, M.S., CRC

Transition Specialist

P: 717-783-9964

E: ksalvati@pa.gov

Sharon Silverman, M.S.Ed., CRC

Transition Supervisor

P: 215-560-1946

E: ssilverman@pa.gov