

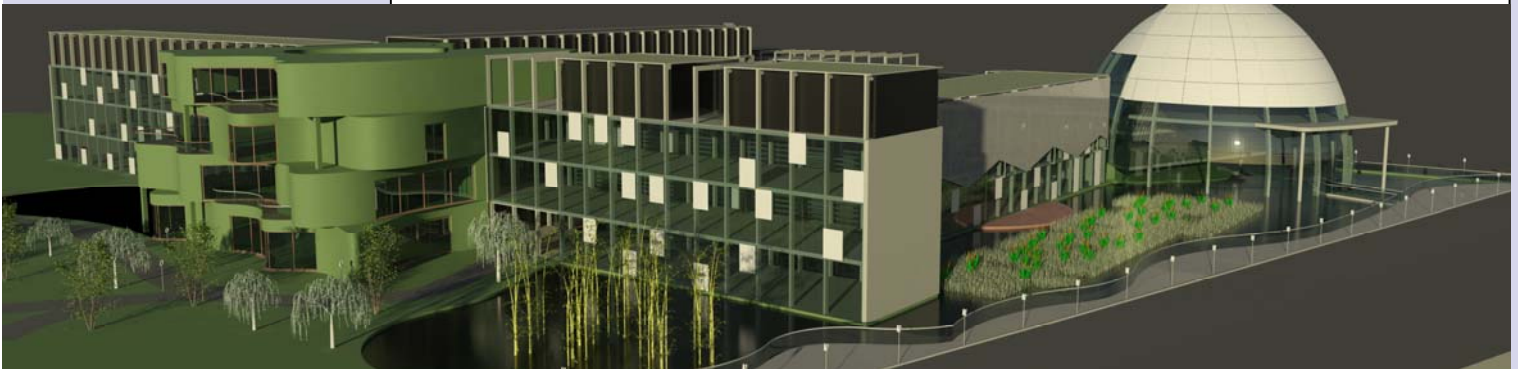


**CHESTNUT
HILL
COLLEGE**
Global Education Office

Howest University College of West Flanders

Belgium

Howest University College of West Flanders



Eligibility **Chestnut Hill
College
Students**

Study
Period **Fall and/or
Spring**

Language
of
Instruction **Dutch/English**

Type of
Housing **Apartment**

Approximate
semester
dates **Fall: End Sept.-
January
Spring: End Jan
- June**

CHC
partner **Since
2013**

Housing
Costs **Approx. \$700/
Month**

The Location

Flanders is the Flemish (Dutch-speaking) community of the Federal Kingdom of Belgium, which is also considered the gateway to Europe. It is a wonderful region based at the heart of the great Western European cultures. Belgium has three official languages Dutch, French, and German. It is very interesting to know that almost everyone in Flanders understands and speaks English. This location is fun for young people and only a couple of hours away from Brussels (Capital of Flanders, Belgium, and the European Union), Paris, London, Cologne, and Amsterdam. Brussels is the home of the Europe Commission and has become the headquarters of a long list of international organizations and companies including NATO, 159 different embassies, 2,500 diplomats, and the world's seventh largest financial market.

The University

HOWEST, University College of West Flanders offers many interesting academic programs. The six international semesters all taught in English. CHC students will take their classes alongside

their Belgian classmates to form teams with the Dutch speaking students. Both parties appreciate this because the Flemish students are fluent in English and they teach the CHC students basic Dutch. HOWEST is extremely proud of the institutions energetic and committed staff members who are dedicated to coaching you through your program. HOWEST has campuses both in Bruges, and Kortrijk. These two towns contain an interesting mix of old traditions and new advancements.

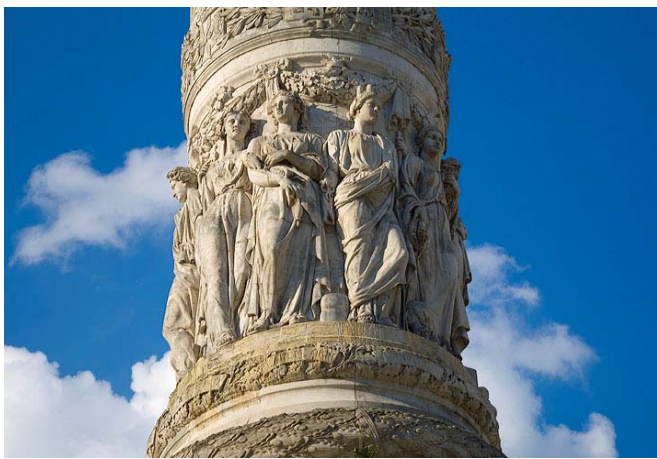
Academics

Students are able to choose from a few different programs that HOWEST offers. International Business Management and Applied Computer Science are both based at the Bruges campus. Tourism Management, Social work, and Multi-media and Communication Management are both based at the Kortrijk campus. Other programs such as DAE, (Digital Arts and Entertainment) you can find at both campuses. Flanders operates on a fully-fledged credit system based on ECTS (European Credit Transfer System). Each course counts for at least 3 U.S. credits.



Housing

HOWEST is dedicated to helping you find the most suitable situations for your stay. Some HOWEST campuses have their own student hostels. All rooms are furnished and equipped with basic cooking facilities. In some residences the dining room, library, bar, recreation rooms and sports facilities have to be shared. In one residence (Studax HOWEST Brugge) kitchen and shower is in the room.



These rooms are allocated on a first-come, first-served basis. Those who want to rent a room on the private market can always take a look at www.kotwest.be. All rooms mentioned on this website get a quality inspection of the City Council services. The website is also available in English and Stuvo HOWEST Student Services (stuvo@howest.be) will gladly help you in your search for an appropriate room. The rent of student rooms can differ widely, depending on the comfort. The average rent of a decent student room fluctuates between €250 and €350 per month.

Visas

Students from the U.S. are required to get a visa before studying abroad in Belgium. Please contact the Global Education Office for assistance.

Air Travel

CHC students are responsible for making their own travel arrangements. Please contact the Global Education Office for assistance.

Tuition

CHC students continue to pay CHC tuition and fees while attending HOWEST. Students are billed for tuition and fees plus a Global Education fee. It is important to note that all financial aid can be applied towards your study in Belgium since you are participating with an official CHC sponsored program. Students do not pay any tuition fees in Belgium. Please note you will pay for your own room and board, any travel, personal expenses, and activities you participate in.



Academic Calendar

Academic calendar is separated into semesters. Fall Semester is from Beginning of September to the end of January. And the Spring Semester is from February to July.

Health Insurance

All students are required to maintain health insurance policy that will provide coverage while abroad and for the entire duration of this period. All CHC students also MUST purchase an ISIC card prior to study abroad. Information on international health insurance providers can be obtained from the Global Education Office. You may find that your present health insurance policy includes overseas coverage. It is important, however, that your carrier provide written verification of such coverage.

So, how do I get started?

Simply come by the Global Education Office to pick up an application form. **Remember-** Applications are due